

APP CRS 183°	Rwy Idg 7099
	TDZE 644
	Apt Elev 650

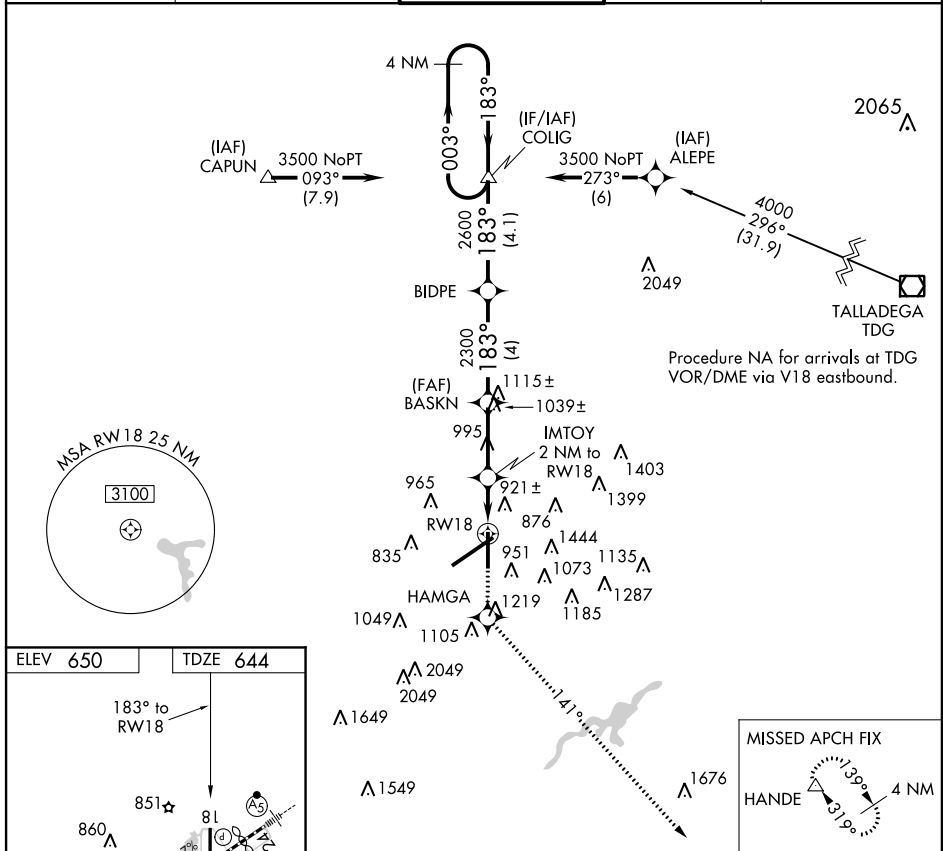
RNAV (GPS) RWY 18

BIRMINGHAM-SHUTTLESWORTH INTL (BHM)

▼ DME/DME RNP-0.3 NA.
 Visibility reduction by helicopters NA.
 When VGSI inop, procedure NA at night.

MISSED APPROACH: Climb to 3800 direct HAMGA and via track 141° to HANDE and hold.

ATIS 119.4 270.1	BIRMINGHAM APP CON 123.8 256.8	BIRMINGHAM TOWER 119.9 317.725	GND CON 121.7 348.6	CLNC DEL 125.675 305.2
----------------------------	------------------------------------------	------------------------------------------	-------------------------------	----------------------------------



SE-4, 07 FEB 2013 to 07 MAR 2013

SE-4, 07 FEB 2013 to 07 MAR 2013

