

LOC/DME I-BXO 111.3 Chan 50	APP CRS 183°	Rwy Idg 7099 THRE 644 Apt Elev 650
---	------------------------	--

LOC RWY 18

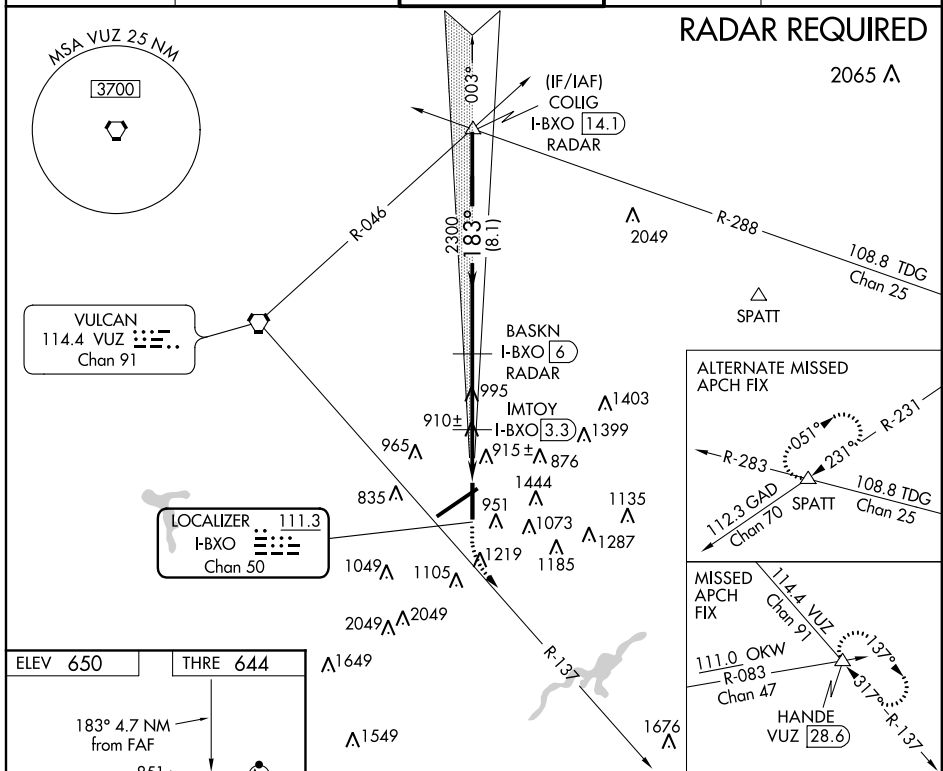
BIRMINGHAM-SHUTTLESWORTH INTL (BHM)

▼ DME or Radar required.
Visibility reduction by helicopters NA.
When VGSI inop, procedure NA at night.

MISSED APPROACH: Climb to 1500 on heading 183° then climbing left turn to 3800 on VUZ VORTAC R-137 to HANDE INT/VUZ 28.6 DME and hold.

ATIS 119.4 270.1	BIRMINGHAM APP CON 123.8 256.8	BIRMINGHAM TOWER 119.9 317.725	GND CON 121.7 348.6	CLNC DEL 125.675 305.2
----------------------------	--	--	-------------------------------	----------------------------------

RADAR REQUIRED



ELEV 650	THRE 644
----------	----------

183° 4.7 NM from FAF

860, 851, 81, 965, 910, 995, 915, 1444, 1135, 1049, 1105, 1219, 1185, 1073, 11287, 1676, 1549, 1649, 2049, 2049, 12049

0.7% DOWN

11998 x 150

TWR 775 ±

7099 x 150

747 ±

36

REIL Rwy 18-36
TDZ/CL Rwy 6
HIRL Rwy 6-24
MIRL Rwy 18-36

FAF to MAP 4.7 NM

Knots	60	90	120	150	180
Min:Sec	4:42	3:08	2:21	1:53	1:34

1500	3800	HANDE	COLIG I-BXO 14.1	
hdg 183°	VUZ R-137	△	RADAR	
I-BXO 1.3	IMTOY I-BXO 3.3	3.28° TCH 48	3500	
1380	2300	183°	Procedure Turn NA	
2 NM	2.7 NM	8.1 NM		
CATEGORY	A	B	C	D
S-18	1380-1	736 (800-1)	1380-2	736 (800-2)
IMTOY FIX MINIMUMS				
S-18	1200-1	556 (600-1)	1200-1½	556 (600-1½)

SE-4, 07 FEB 2013 to 07 MAR 2013

SE-4, 07 FEB 2013 to 07 MAR 2013