

LOC I-BHM 110.3	APP CRS 058°	Rwy Idg 11998	TDZE 606
		Apt Elev 650	

ILS or LOC RWY 6

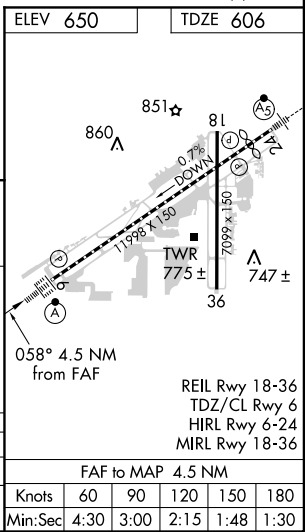
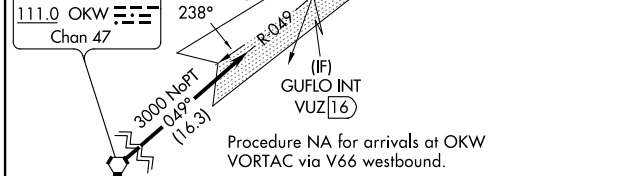
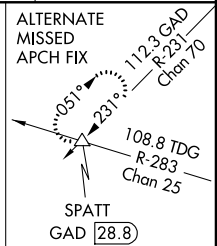
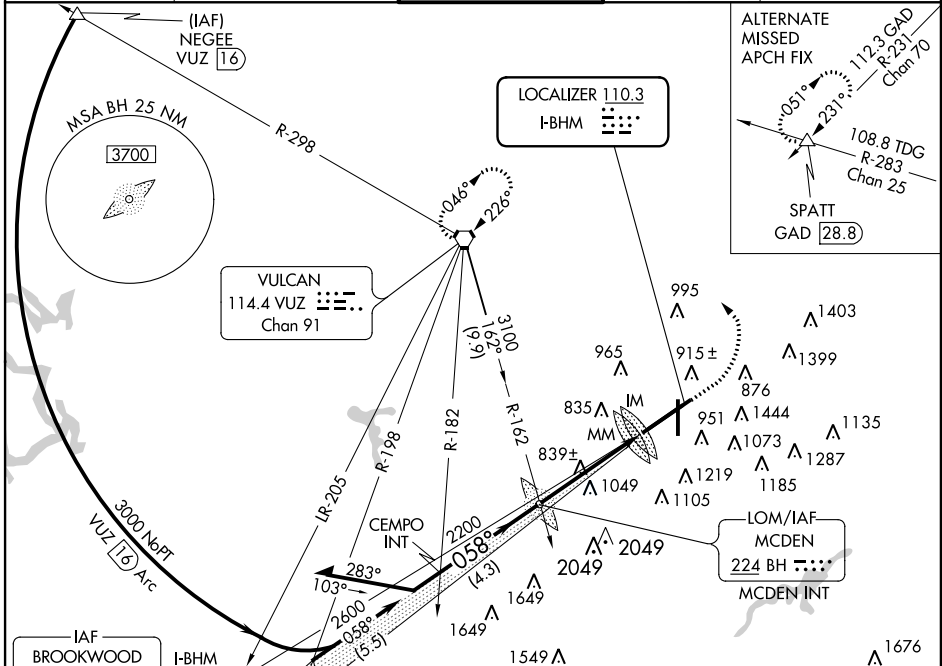
BIRMINGHAM-SHUTTLESWORTH INTL (BHM)

▼ For inoperative ALSF, increase S-ILS 6 Cat E visibility to RVR 4000 and S-LOC 6 Cat E visibility to 1¾. Cat E procedure turn NA.



MISSED APPROACH: Climb to 2000 then climbing left turn to 3000 direct VUZ VORTAC and hold.

ATIS 119.4 270.1	BIRMINGHAM APP CON 123.8 256.8	BIRMINGHAM TOWER 119.9 317.725	GND CON 121.7 348.6	CLNC DEL 125.675 305.2
----------------------------	--	--	-------------------------------	----------------------------------



VGSI and ILS glidepath not coincident (VGSI Angle 3.00/TCH 68).	MCDEN LOM/INT	2000	3000	VUZ
3100	2121	↑	↶	⬡
238°				
2700				
058°				
2200				

CATEGORY	A	B	C	D	E
S-ILS 6		806/18	200 (200-½)		
S-LOC 6	1120/24	514 (500-½)	1120/50 514 (500-1)	1120/60	514 (500-1¼)

SE-4, 07 FEB 2013 to 07 MAR 2013

SE-4, 07 FEB 2013 to 07 MAR 2013