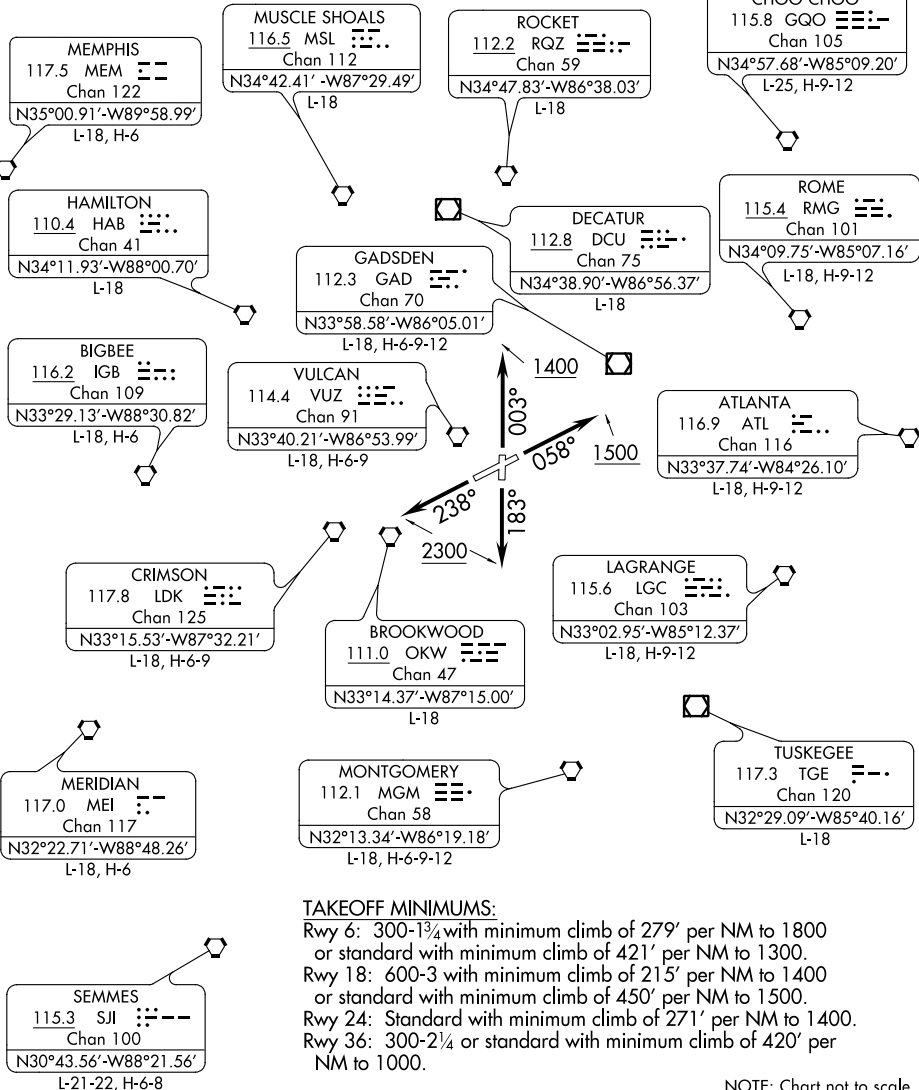


ATIS  
119.4 270.1  
CLNC DEL  
125.675 305.2  
GND CON  
121.7 348.6  
BIRMINGHAM TOWER  
119.9 317.725  
BIRMINGHAM DEP CON  
123.8 256.8 (050°-230°)  
127.675 338.2 (231°-049°)

(NARRATIVE ON FOLLOWING PAGE)

NOTE: Radar required.



SE-4, 07 FEB 2013 to 07 MAR 2013

SE-4, 07 FEB 2013 to 07 MAR 2013

**TAKEOFF MINIMUMS:**

- Rwy 6: 300-1¾ with minimum climb of 279' per NM to 1800 or standard with minimum climb of 421' per NM to 1300.
- Rwy 18: 600-3 with minimum climb of 215' per NM to 1400 or standard with minimum climb of 450' per NM to 1500.
- Rwy 24: Standard with minimum climb of 271' per NM to 1400.
- Rwy 36: 300-2¼ or standard with minimum climb of 420' per NM to 1000.

NOTE: Chart not to scale.