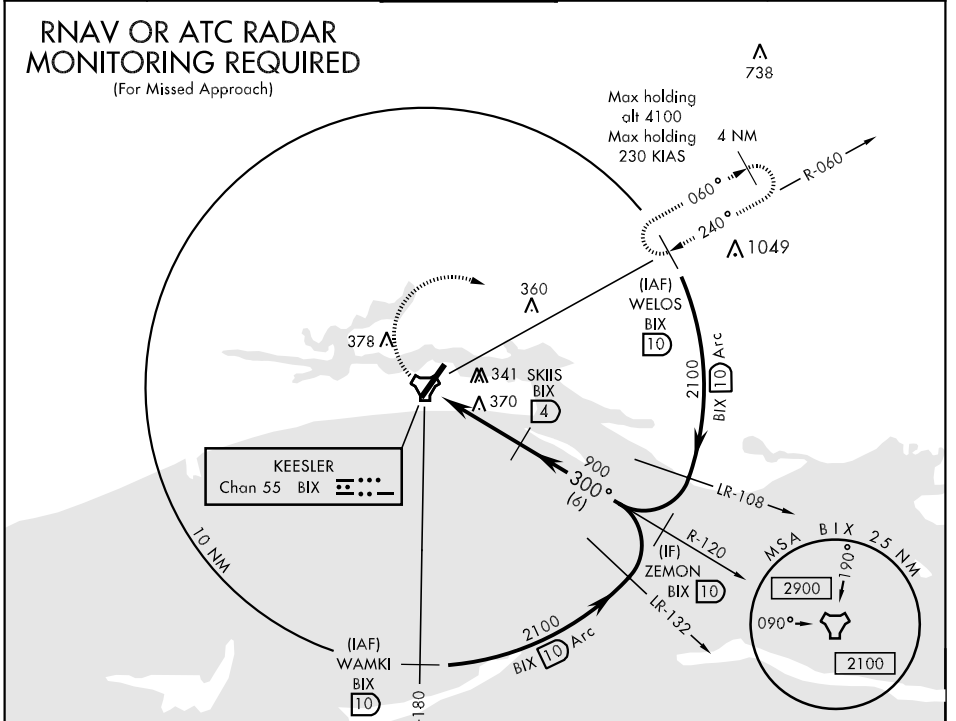


TACAN BIX Chan 55	APCH CRS 300°	Rwy ldg THRE Arpt Elev	N/A N/A 33	AL-49 [USAF]	KEESLER AFB (KBIX)
----------------------	------------------	------------------------------	------------------	--------------	--------------------

▼ MISSED APPROACH: Climb tracking 300° to BIX TACAN then right turn to intercept BIX R-060 climbing to 2100 to 10 DME (WELOS) and hold.

ATIS 281.55	GULFPORT APP CON 124.6 354.1 (130°-309°) 127.5 254.25 (310°-129°)	KEESLER TOWER ★ 120.75 269.075	GND CON 121.8 275.8	CLNC DEL 121.8 275.8
----------------	---	-----------------------------------	------------------------	-------------------------

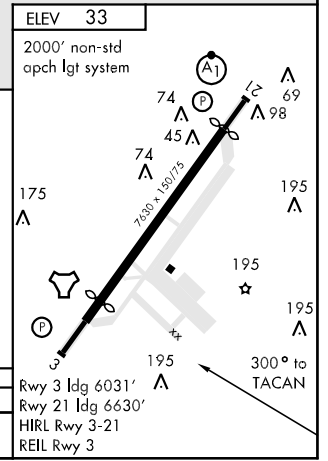
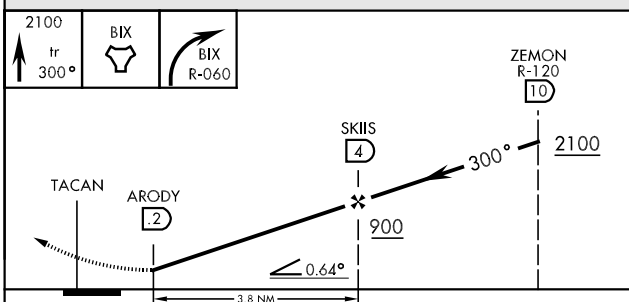
RNAV OR ATC RADAR MONITORING REQUIRED
(For Missed Approach)



SC-4, 07 FEB 2013 to 07 MAR 2013

SC-4, 07 FEB 2013 to 07 MAR 2013

EMERG SAFE ALT 100 NM 3100



CATEGORY	A	B	C	D
CIRCLING	640-1 607 (700-1)	700-1 667 (700-1)	700-1¾ 667 (700-1¾)	740-2¼ 707 (800-2¼)