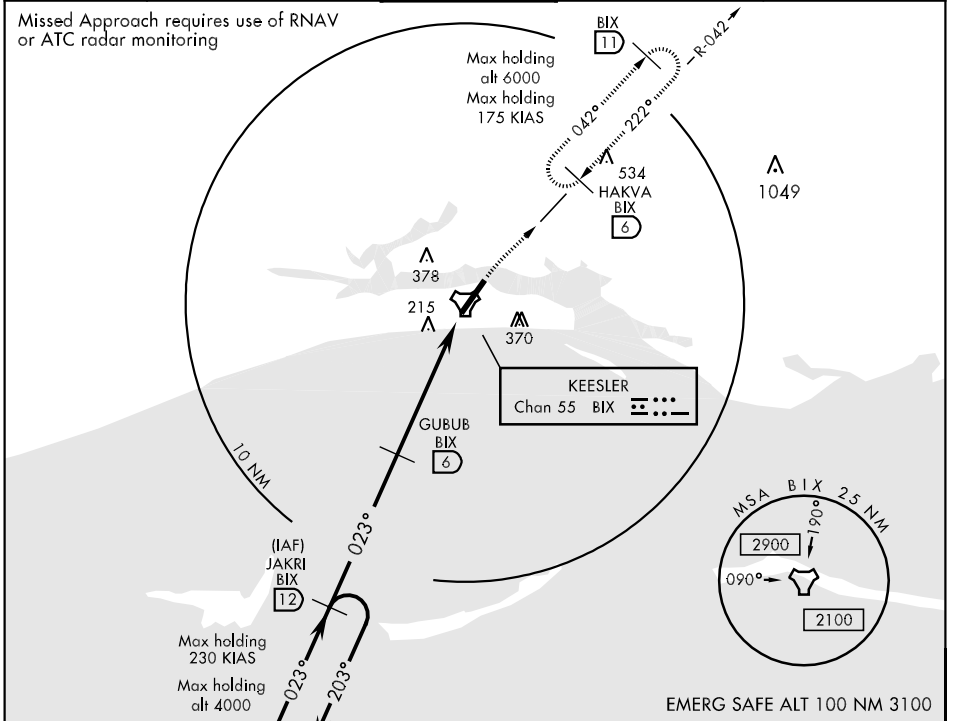


TACAN BIX Chan 55	APCH CRS 023°	Rwy ldg THRE Arpt Elev 6031 23 33	AL-49 [USAF]	KEESLER AFB (KBIX)
-----------------------------	-------------------------	---	--------------	--------------------

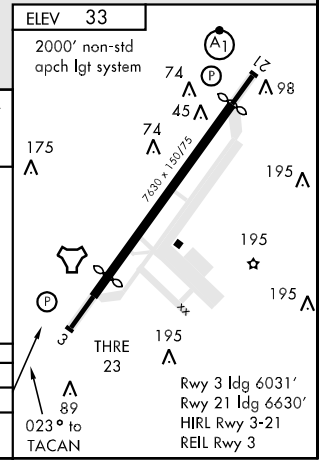
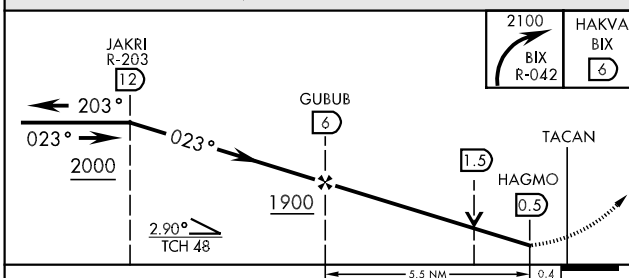
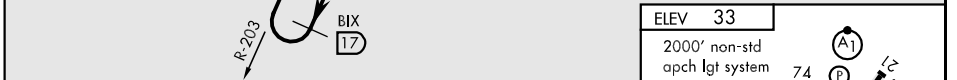
▼ MISSED APPROACH: Turn right climbing to 2100 to intercept BIX TACAN R-042 to 6 DME (HAKVA) and hold.

ATIS 281.55	GULFPORT APP CON 124.6 354.1 (130° - 309°) 127.5 254.25 (310° - 129°)	KEESLER TOWER ★ 120.75 269.075	GND CON 121.8 275.8	CLNC DEL 121.8 275.8
-----------------------	---	--	-------------------------------	--------------------------------



SC-4, 07 FEB 2013 to 07 MAR 2013

SC-4, 07 FEB 2013 to 07 MAR 2013



CATEGORY	A	B	C	D
S-3	520-55 497 (500-1)		520-1 $\frac{3}{8}$ 497 (500-1 $\frac{3}{8}$)	
CIRCLING	620-1 587 (600-1)	700-1 667 (700-1)	700-1 $\frac{3}{4}$ 667 (700-1 $\frac{3}{4}$)	740-2 $\frac{1}{4}$ 707 (800-2 $\frac{1}{4}$)