

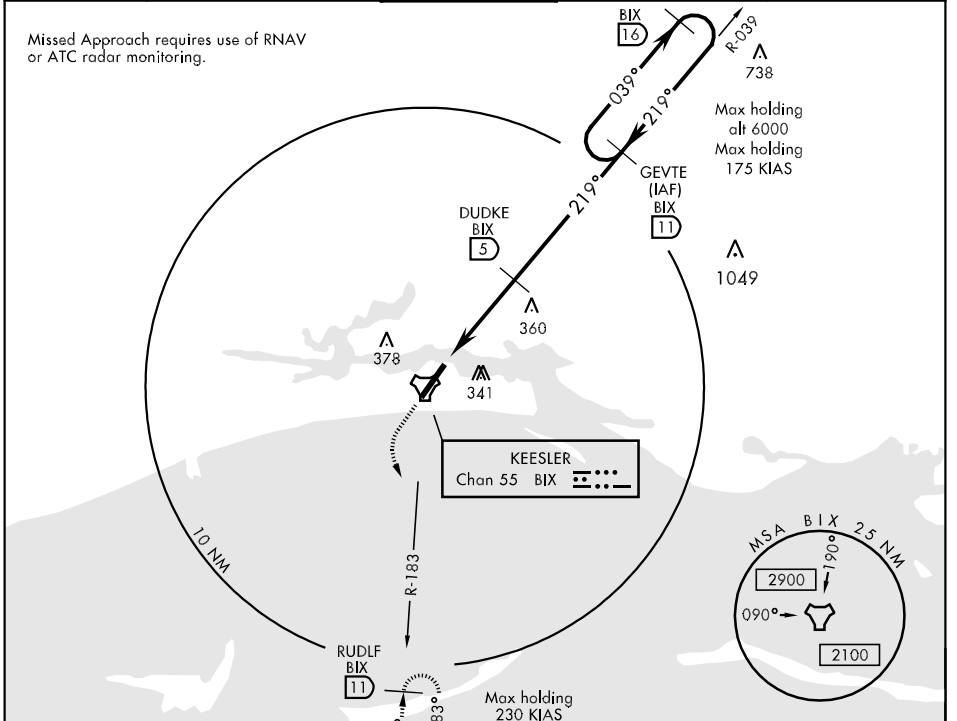
TACAN BIX Chan 55	APCH CRS 219°	Rwy ldg THRE Arpt Elev 6630 17 33	AL-49 [USAF]	KEESLER AFB (KBIX)
-----------------------------	-------------------------	---	--------------	--------------------

▼ * When ALS inop, increase CAT AB RVR to 55, vis to 1 mile, CAT CD vis to 1½ miles.

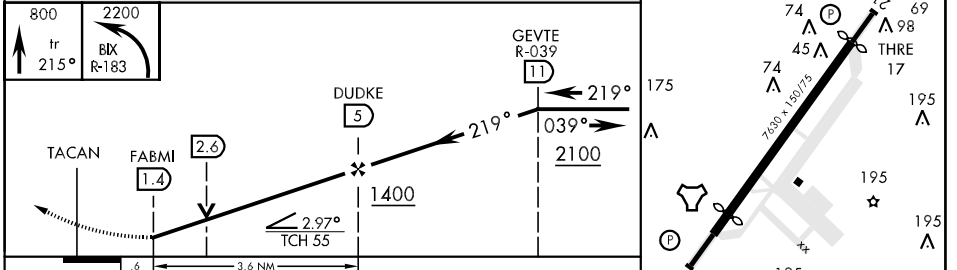
ALSF-1

MISSED APPROACH: Climbs to 800 tracking 215°, then turn left to intercept BIX R-183 to 11 DME (RUDLF) climbing to 2200 and hold.

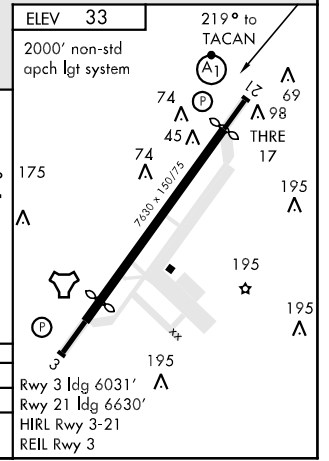
ATIS 281.55	GULFPORT APP CON 124.6 354.1 (130°-309°) 127.5 254.25 (310°-129°)	KEESLER TOWER * 120.75 269.075	GND CON 121.8 275.8	CLNC DEL 121.8 275.8
-----------------------	---	--	-------------------------------	--------------------------------



EMERG SAFE ALT 100 NM 3100



CATEGORY	A	B	C	D
S-21*	640/40 623 (700-¾)	640-1¾ 623 (700-1¾)	640-1¾ 623 (700-1¾)	640-1¾ 623 (700-1¾)
CIRCLING	640-1 607 (700-1)	700-1 667 (700-1)	700-1¾ 667 (700-1¾)	740-2¼ 707 (800-2¼)



SC-4, 07 FEB 2013 to 07 MAR 2013

SC-4, 07 FEB 2013 to 07 MAR 2013