

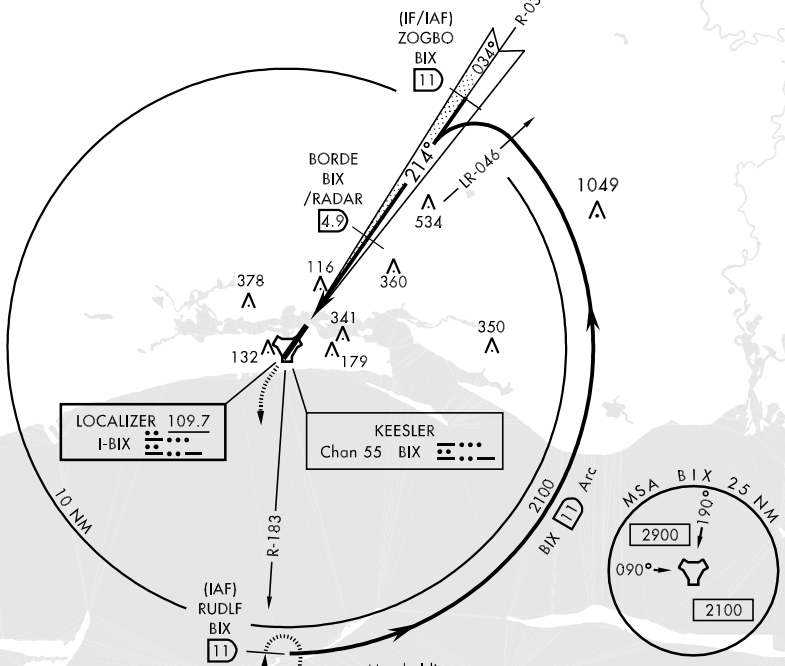
BILOXI, MISSISSIPPI

# ILS or LOC/DME RWY 21

LOC I-BIX <b>109.7</b>	APCH CRS <b>214°</b>	Rwy Idg THRE Arpt Elev <b>6630</b> <b>17</b> <b>33</b>	AL-49 [USAF]	KEESLER AFB (KBIX)
* When ALS inop, increase CAT ABCD RVR to 40, vis to ¼ mile. ** When ALS inop, increase CAT AB RVR to 55, vis to 1 mile, CAT CD vis to 1 ¾ miles.		ALSF-1	MISSED APPROACH: Climb to 800 tracking 214°, upon reaching 800 turn left to intercept BIX TACAN R-183 climbing to 2200 to 11 DME (RUDLF) and hold.	

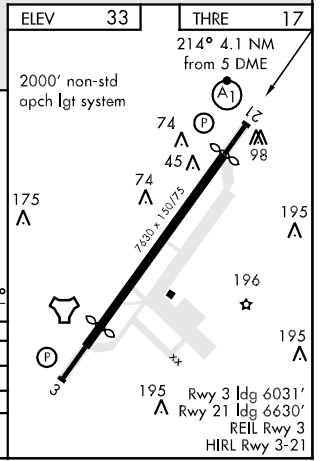
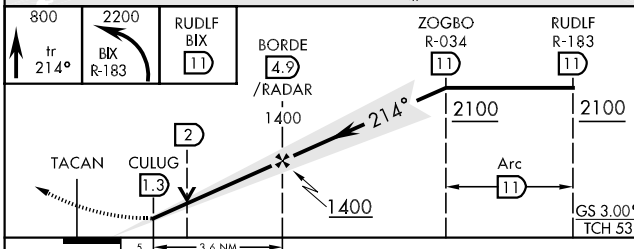
ATIS <b>281.55</b>	GULFPORT APP CON <b>124.6 354.1</b> <b>127.5 254.25</b> (130° - 309°) (310° - 129°)	KEESLER TOWER * <b>120.75 269.075</b>	GND CON <b>121.8 275.8</b>	CLNC DEL <b>121.8 275.8</b>
-----------------------	---	--	-------------------------------	--------------------------------

Missed approach requires use of RNAV or ATC radar monitoring.



Max holding alt 6000  
Max holding 230 KIAS

EMERG SAFE ALT 100 NM 3100



CATEGORY	A	B	C	D
S-ILS 21*	217/24		200 (200-½)	
S-LOC 21**	460/24	443 (500-½)	460/45	443 (500-¾)
CIRCLING	620-1	700-1	700-1¾	740-2¼
	587 (600-1)	667 (700-1)	667 (700-1¾)	707 (800-2¼)

BILOXI, MISSISSIPPI  
Amtd 4 26JUL12

30° 25' N - 88° 55' W

KEESLER AFB (KBIX)

# ILS or LOC/DME RWY 21

SC-4, 07 FEB 2013 to 07 MAR 2013

SC-4, 07 FEB 2013 to 07 MAR 2013