

WAAS CH 87127 W07A	APP CRS 070°	Rwy Idg THRE Apt Elev 5503 3636 3652
--	------------------------	--

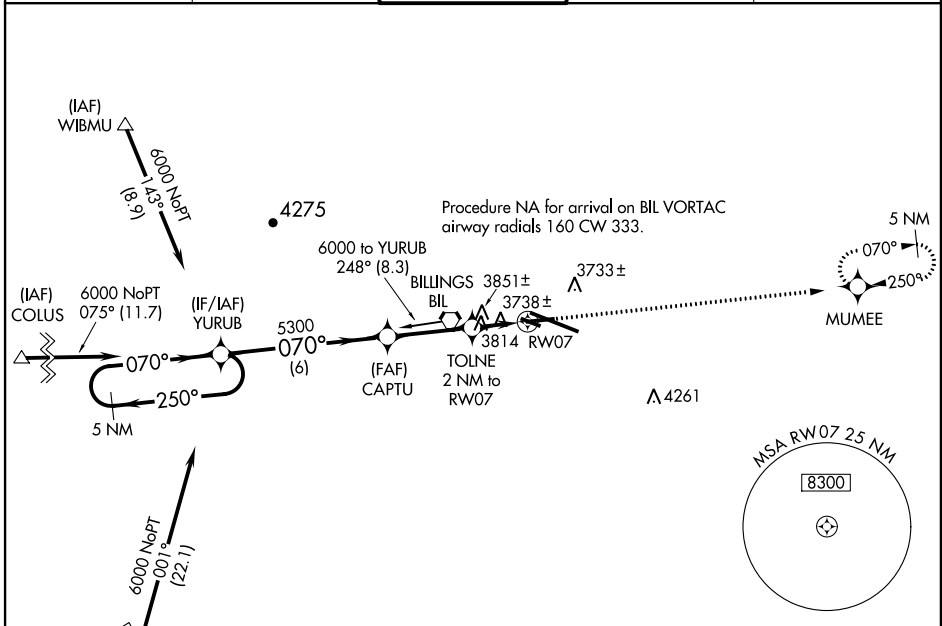
RNAV (GPS) RWY 7

BILLINGS LOGAN INTL (BIL)

▼ For uncompensated Baro-VNAV systems, LNAV/VNAV NA below -27°C (-16°F) or above 21°C (69°F). When VGSI inop, Straight-in/Circling Rwy 7 procedure NA at night. DME/DME RNP- 0.3 NA. Visibility reduction by helicopters NA.

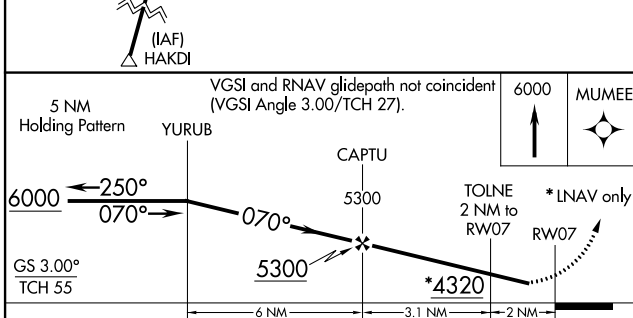
MISSED APPROACH: Climb to 6000 direct MUMEE and hold.

ATIS 126.3	BILLINGS APP CON 120.5 284.6	BILLINGS TOWER 127.2 257.8	GND CON 121.9	CLNC DEL 121.9
----------------------	--	---	-------------------------	--------------------------



NW-1, 07 FEB 2013 to 07 MAR 2013

NW-1, 07 FEB 2013 to 07 MAR 2013



ELEV 3652	D	THRE 3636
-----------	----------	-----------

CATEGORY	A	B	C	D
LPV DA		3886-1	250 (300-1)	
LNAV/VNAV DA		4015-1¼	379 (400-1¼)	
LNAV MDA	4120-1	484 (500-1)	4120-1¾	484 (500-1¾)
CIRCLING	4160-1 508 (600-1)	4180-1 528 (600-1)	4180-1½ 528 (600-1½)	4220-2 568 (600-2)