

WAAS CH 56222 W28A	APP CRS 278°	Rwy Idg THRE 3488 Apt Elev 3652
--	------------------------	--

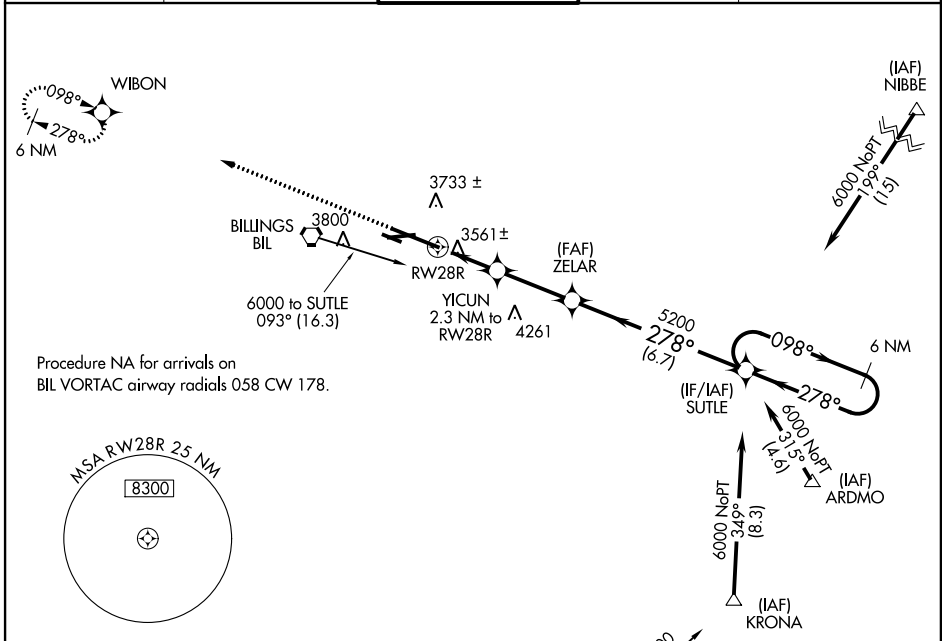
RNAV (GPS) RWY 28R

BILLINGS LOGAN INTL (BIL)

▼ For uncompensated Baro-VNAV systems, LNAV/VNAV NA below -27°C (-16°F) or above 21°C (69°F).
DME/DME RNP-0.3 NA. Visibility reduction by helicopters NA.

MISSED APPROACH: Climb to 5900 direct WIBON and hold.

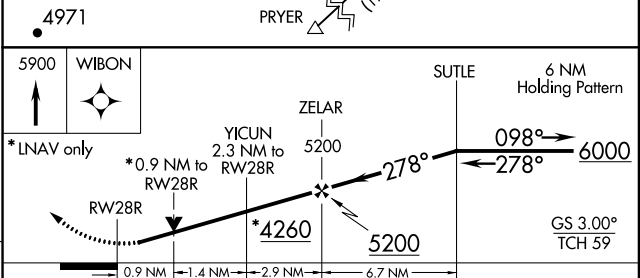
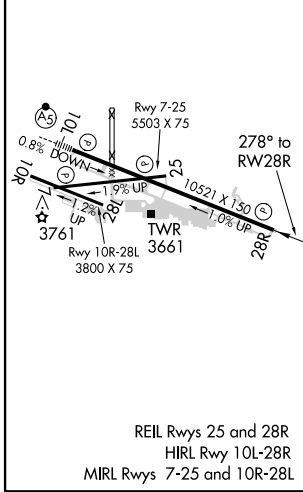
ATIS 126.3	BILLINGS APP CON 120.5 284.6	BILLINGS TOWER 127.2 257.8	GND CON 121.9	CLNC DEL 121.9
----------------------	--	--------------------------------------	-------------------------	--------------------------



NW-1, 07 FEB 2013 to 07 MAR 2013

NW-1, 07 FEB 2013 to 07 MAR 2013

ELEV 3652	D	THRE 3488
-----------	----------	-----------



CATEGORY	A	B	C	D
LPV DA		3738- ³ / ₄	250 (100- ³ / ₄)	
LNAV/VNAV DA		3757- ⁷ / ₈	269 (200- ⁷ / ₈)	
LNAV MDA		3820-1	332 (200-1)	
CIRCLING	4160-1 508 (600-1)	4180-1 528 (600-1)	4180-1 ¹ / ₂ 528 (600-1 ¹ / ₂)	4220-2 568 (600-2)