

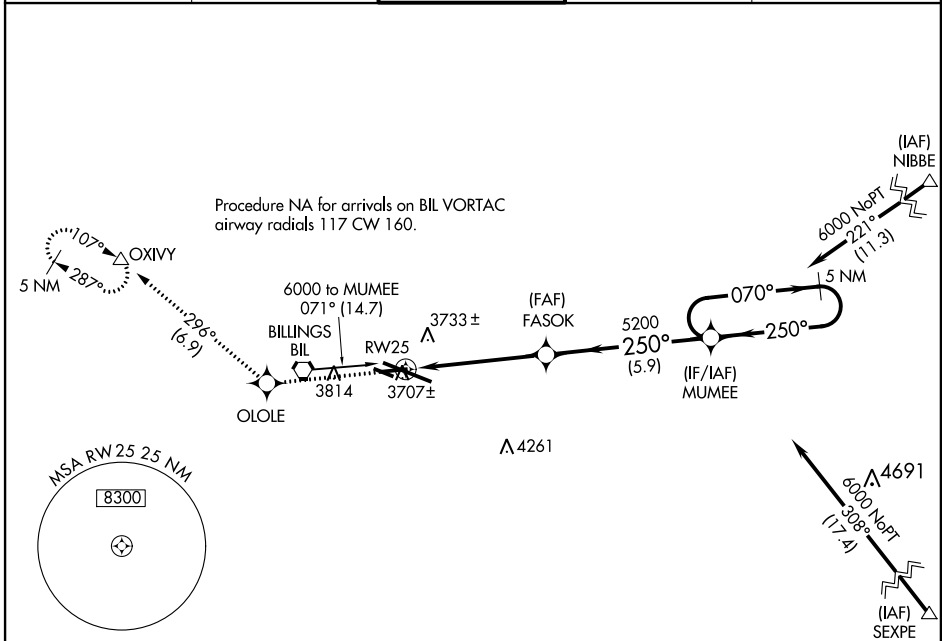
WAAS CH <b>78028</b> <b>W25A</b>	APP CRS <b>250°</b>	Rwy Idg THRE Apt Elev	<b>5503</b> <b>3534</b> <b>3652</b>
--	------------------------	-----------------------------	---

# RNAV (GPS) RWY 25

BILLINGS LOGAN INTL (BIL)

**▼** For uncompensated Baro-VNAV systems, LNAV/VNAV NA below -27°C (-16°F) or above 21°C (69°F). DME/DME RNP-0.3 NA. MISSED APPROACH: Climb to 6000 direct OLOLE and on track 296° to OXIVY and hold.

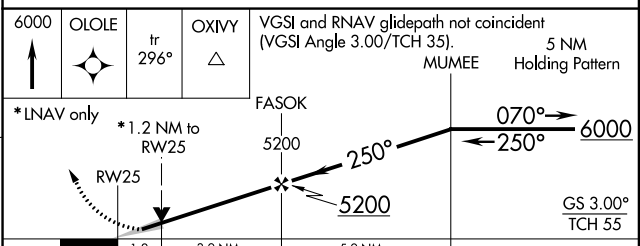
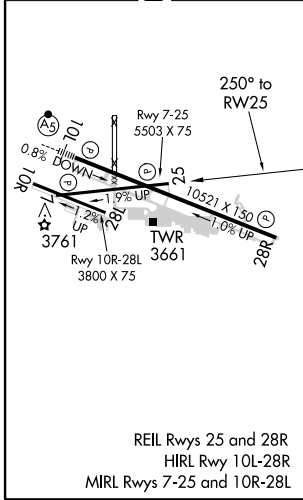
ATIS <b>126.3</b>	BILLINGS APP CON <b>120.5 284.6</b>	<b>BILLINGS TOWER</b> <b>127.2 257.8</b>	GND CON <b>121.9</b>	CLNC DEL <b>121.9</b>
----------------------	--	---	-------------------------	--------------------------



NW-1, 07 FEB 2013 to 07 MAR 2013

NW-1, 07 FEB 2013 to 07 MAR 2013

ELEV 3652	<b>D</b>	THRE 3534
-----------	----------	-----------



CATEGORY	A	B	C	D
LPV DA		3784-3/4	250 (200-3/4)	
LNAV/VNAV DA		3868-1 1/8	334 (300-1 1/8)	
LNAV MDA	3960-1	426 (400-1)	3960-1 1/4	426 (400-1 1/4)
CIRCLING	4160-1 508 (600-1)	4180-1 528 (600-1)	4180-1 1/2 528 (600-1 1/2)	4220-2 568 (600-2)