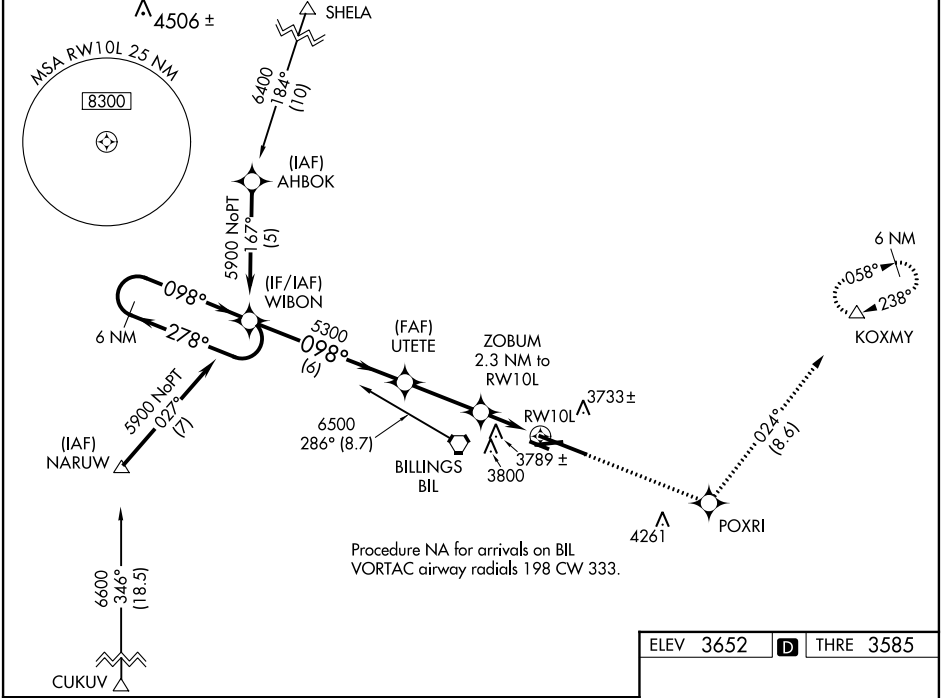


WAAS CH 50122 W10A	APP CRS 098°	Rwy Idg THRE 3585 Apt Elev 3652
--	------------------------	--

RNAV (GPS) RWY 10L

BILLINGS LOGAN INTL (BIL)

<p>▼ For uncompensated Baro-VNAV systems, LNAV/VNAV NA below -27°C (-16°F) or above 21°C (69°F). DME/DME RNP- 0.3 NA.</p>		<p>MALSR</p>	<p>MISSED APPROACH: Climb to 6000 direct POXRI and on track 024° to KOXMY and hold.</p>	
ATIS 126.3	BILLINGS APP CON 120.5 284.6	BILLINGS TOWER 127.2 257.8	GND CON 121.9	CLNC DEL 121.9



NW-1, 07 FEB 2013 to 07 MAR 2013

NW-1, 07 FEB 2013 to 07 MAR 2013

6 NM Holding Pattern	WIBON	6000	POXRI	tr 024°	KOXMY
5900 ← 278°	→ 098°	098°	UTETE 5300	ZOBUM 2.3 NM to RW10L	*1.3 NM to *RNAV only
GS 3.00°	TCH 51	5300	*4360	RW10L	
CATEGORY	A	B	C	D	
LPV DA	3785/24		200 (200-½)		
LNAV/VNAV DA	4092/60		507 (500-1¼)		
LNAV MDA	4040/24	455 (400-½)	4040/45	455 (400-¾)	
CIRCLING	4160-1 508 (600-1)	4180-1 528 (600-1)	4180-1½ 528 (600-1½)	4220-2 568 (600-2)	

