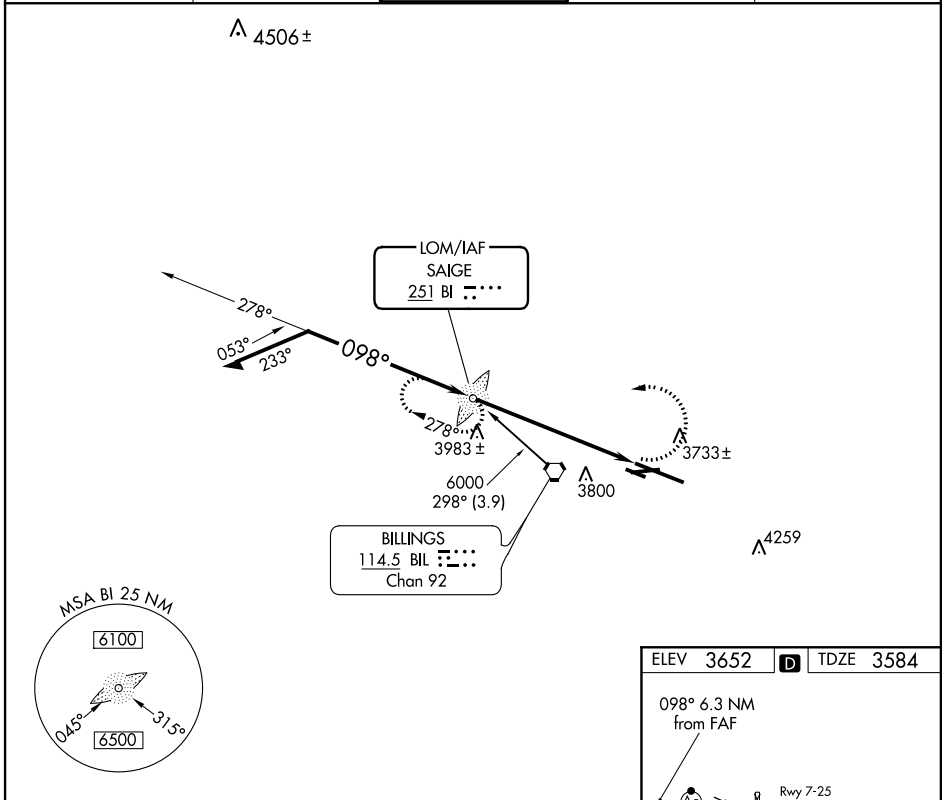


**NDB RWY 10L**  
BILLINGS LOGAN INTL (BIL)

LOM BI <b>251</b>	APP CRS <b>098°</b>	Rwy Idg <b>10521</b>
		TDZE <b>3584</b>
		Apt Elev <b>3652</b>

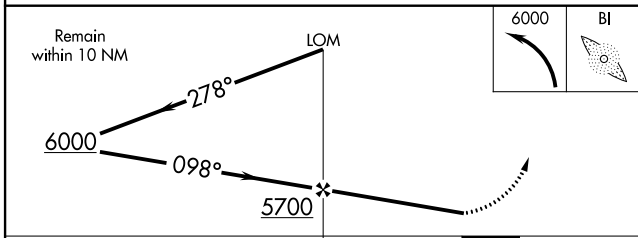
 	MALSR	MISSED APPROACH: Climbing left turn to 6000 direct Saige LOM and hold.

ATIS <b>126.3</b>	BILLINGS APP CON <b>120.5 284.6</b>	<b>BILLINGS TOWER</b> <b>127.2 257.8</b>	GND CON <b>121.9</b>	CLNC DEL <b>121.9</b>
----------------------	--	---	-------------------------	--------------------------



NW-1, 07 FEB 2013 to 07 MAR 2013

NW-1, 07 FEB 2013 to 07 MAR 2013



ELEV 3652	<b>D</b>	TDZE 3584
-----------	----------	-----------

REIL Rwys 25 and 28R  
HIRL Rwy 10L-28R  
MIRL Rwys 7-25 and 10R-28L  
FAF to MAP 6.3 NM

Knots	60	90	120	150	180
Min:Sec	6:18	4:12	3:09	2:31	2:06

CATEGORY	A	B	C	D
S-10L	4300/40 716 (700-¾)		4300-1½ 716 (700-1½)	4300-2 716 (700-2)
CIRCLING	4300-1 648 (700-1)		4300-2 648 (700-2)	4300-2¼ 648 (700-2¼)