

LOC I-BIL 110.3	APP CRS 098°	Rwy Idg 10521 THRE 3585 Apt Elev 3652
---------------------------	------------------------	---

ILS or LOC RWY 10L

BILLINGS LOGAN INTL (BIL)

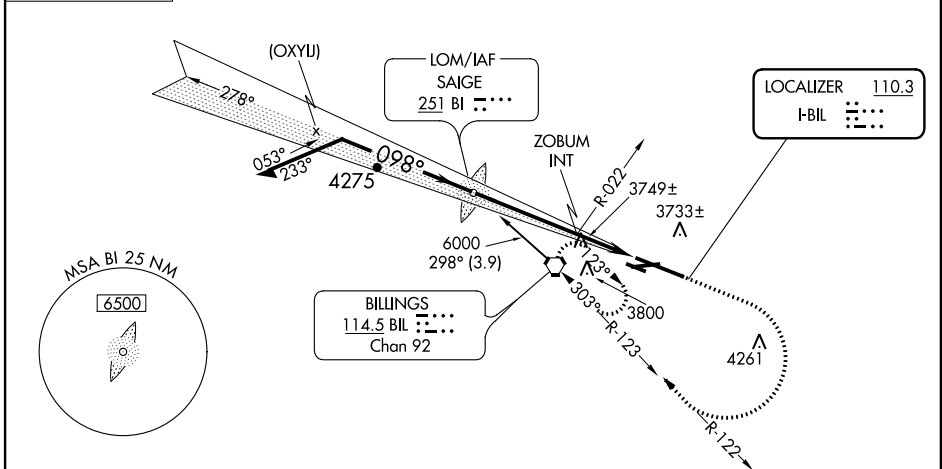
<p>⚠ For inoperative MALSR, increase S-LOC R10L Cat C/D visibility to 2½ mile. # RVR 1800 authorized with the use of FD or AP or HUD to DA.</p>	<p>MALSR AS</p>	<p>MISSED APPROACH: Climb to 4500 then climbing right turn to 6000 on BIL VORTAC R-122 to BIL VORTAC and hold.</p>
--	---------------------	--

ATIS 126.3	BILLINGS APP CON 120.5 284.6	BILLINGS TOWER 127.2 257.8	GND CON 121.9	CLNC DEL 121.9
----------------------	--	--------------------------------------	-------------------------	--------------------------

ALTERNATE MISSED APPROACH FIX

SAIGE
251 BI :····

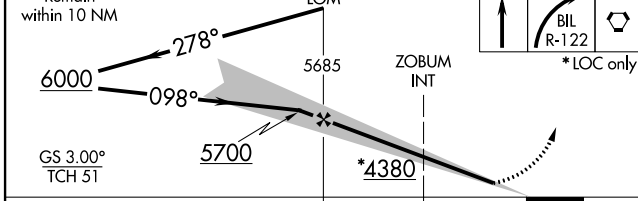
RADAR or ADF REQUIRED



NW-1, 07 FEB 2013 to 07 MAR 2013

NW-1, 07 FEB 2013 to 07 MAR 2013

Remain within 10 NM	LOM	4500	6000	BIL	ELEV 3652	THRE 3585
---------------------	-----	------	------	-----	-----------	-----------



REIL Rws 25 and 28R
HIRL Rwy 10L-28R
MIRL Rws 7-25 and 10R-28L

FAF to MAP 6.3 NM

Knots	60	90	120	150	180
Min:Sec	6:18	4:12	3:09	2:31	2:06

CATEGORY	A	B	C	D
S-ILS 10L #	3785/24 200 (200-½)			
S-LOC 10L	4380/24 795 (800-½)	4380/40 795 (800-¾)	4380-1¾	795 (800-1¾)
CIRCLING	4380-1 728 (800-1)	4380-1¼ 728 (800-1¼)	4380-2½	728 (800-2½)
ZOBUM FIX MINIMUMS (DUAL VOR RECEIVERS REQUIRED)				
S-LOC 10L	4000/24	415 (400-½)	4000/40	415 (400-¾)
CIRCLING	4160-1 508 (600-1)	4180-1 528 (600-1)	4180-1½ 528 (600-½)	4220-2 568 (700-2)