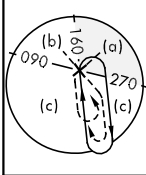
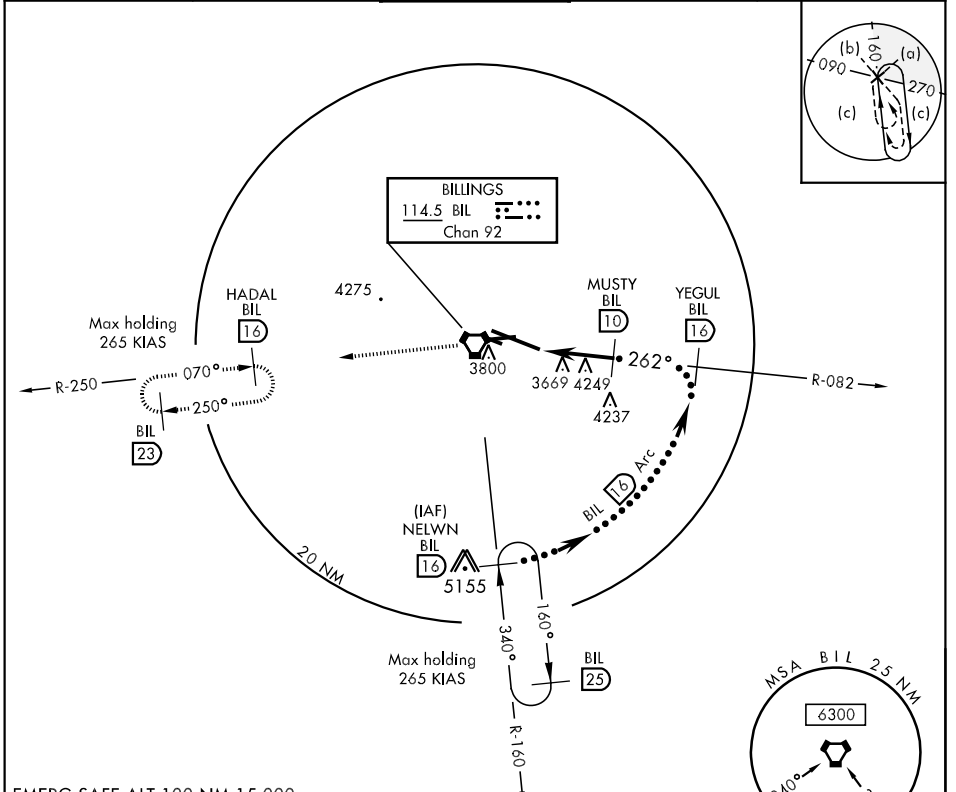


# HI-VOR/DME or TACAN RWY 28R

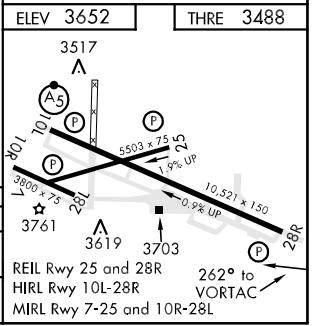
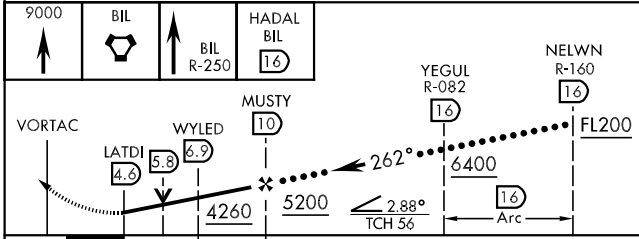
VORTAC BIL <b>114.5</b> Chan <b>92</b>	AFCH CRS <b>262°</b>	Rwy ldg <b>10,521</b> THRE <b>3488</b> Arpt Elev <b>3652</b>	JAL-48 [USAF]	BILLINGS LOGAN INTL (KBIL)
--	-------------------------	--	---------------	----------------------------

**▽** MISSED APPROACH: Climb to 9000 on BIL VORTAC R-082 to BIL VORTAC, and on BIL VORTAC R-250 to HADAL/16 DME and hold, continue Climb-in-Hold to 9000.

ATIS <b>126.3</b>	BILLINGS APP CON <b>120.5 284.6</b>	BILLINGS TOWER <b>127.2 257.8</b>	GND CON <b>121.9</b>	CLNC DEL <b>121.9</b>
----------------------	--	--------------------------------------	-------------------------	--------------------------



EMERG SAFE ALT 100 NM 15,000



CATEGORY	C	D	E
S-28R	3940-1 3/8	452 (300-1 3/8)	
CIRCLING	4180-1 1/2 528 (600-1 1/2)	4220-2 568 (600-2)	4580-3 928 (1000-3)

ELEV 3652	THRE 3488
-----------	-----------

# HI-VOR/DME or TACAN RWY 28R

NW-1, 07 FEB 2013 to 07 MAR 2013

NW-1, 07 FEB 2013 to 07 MAR 2013