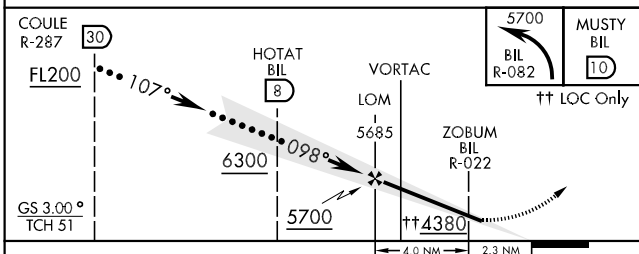
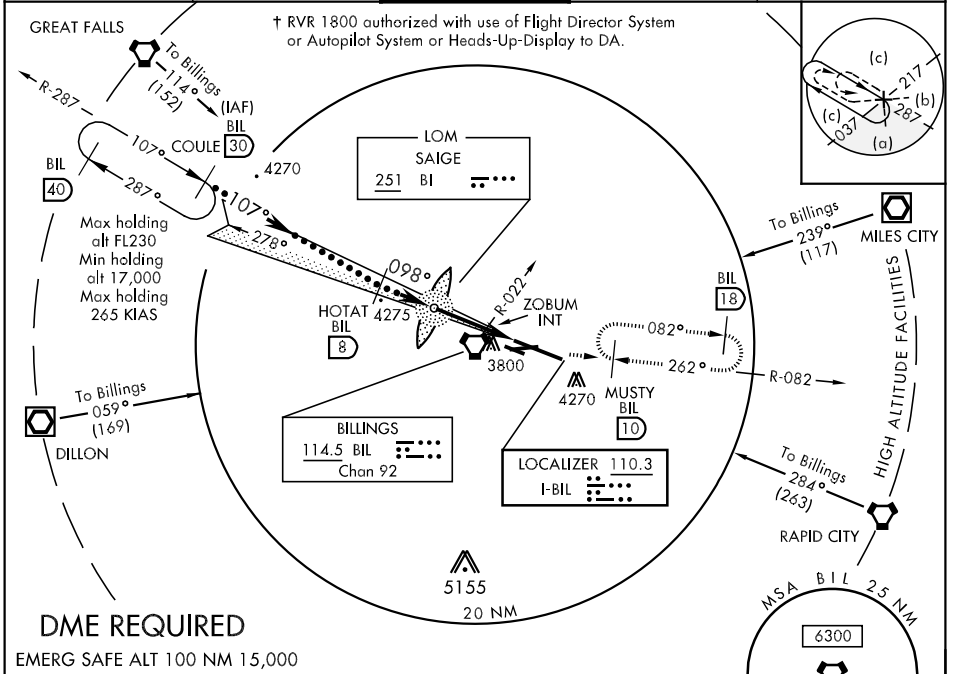


# HI-ILS or LOC RWY 10L

LOC I-BIL <b>110.3</b>	APCH CRS <b>098°</b>	Rwy Idg <b>10,521</b> THRE <b>3585</b> Arpt Elev <b>3652</b>	JAL-48 [USAF]	MALSR 	MISSED APPROACH: Climb to 5700 via BIL VORTAC R-082 to MUSTY/10 DME and hold, or as directed by ATC.
* When ALS inop, increase CAT CDE RVR to 40 and vis to 3/4 mile. ** When ALS inop, increase CAT CDE vis to 2 1/2 miles. *** When ALS inop, increase CAT CDE RVR to 60 and vis to 1 1/2 miles.					

ATIS <b>126.3</b>	BILLINGS APP CON <b>120.5 284.6</b>	BILLINGS TOWER <b>127.2 257.8</b>	GND CON <b>121.9</b>	CLNC DEL <b>121.9</b>
----------------------	--	--------------------------------------	-------------------------	--------------------------



ELEV 3652	THRE 3585
098° 6.3 NM from LOM 3517 3761 3619 3703 5503 x 75 1.9% UP 10.521 x 150 0.9% DOWN 28R	
REIL Rwy 25 and 28R HIRL Rwy 10L-28R MIRL Rwy 7-25 and 10R-28L	
FAF to MAP 6.3 NM	
Knots	120 140 160 180 200
Min:Sec	3:09 2:42 2:22 2:06 1:53

CATEGORY	C	D	E
S-ILS 10L * †	3785/24	200 (200-1/2)	
S-LOC 10L **	4380-1 3/4	795 (800-1 3/4)	
CIRCLING	4380-2 1/2	728 (800-2 1/2)	4580-3 928 (1000-3)
ZOBUM FIX MINIMUMS (DUAL VOR RECEIVERS REQUIRED)			
S-LOC 10L ***	4000/40	415 (400-3/4)	
CIRCLING	4160-1 1/2 508 (600-1 1/2)	4220-2 568 (600-2)	4580-3 928 (1000-3)

# HI-ILS or LOC RWY 10L

NW-1, 07 FEB 2013 to 07 MAR 2013

NW-1, 07 FEB 2013 to 07 MAR 2013