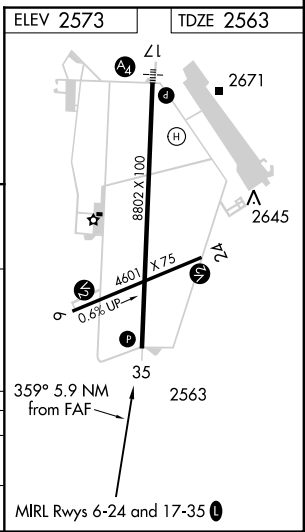
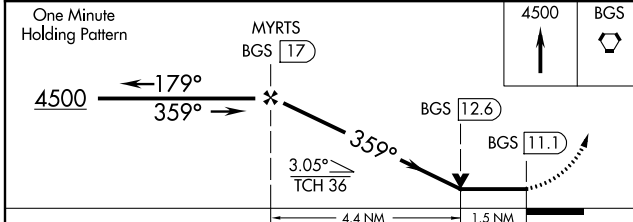
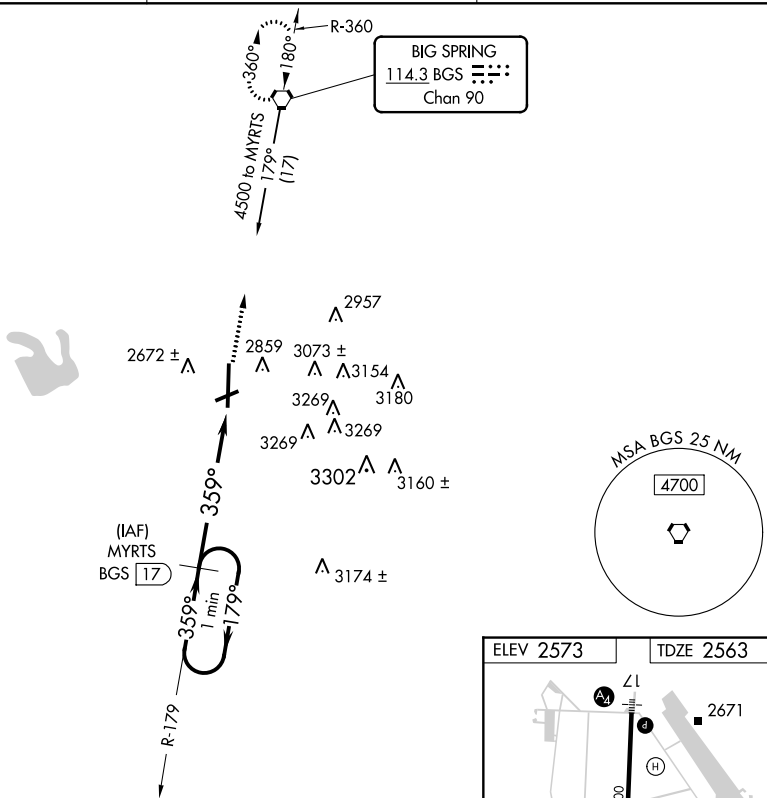


VORTAC BGS <b>114.3</b> Chan <b>90</b>	APP CRS <b>359°</b>	Rwy Idg <b>8802</b> TDZE <b>2563</b> Apt Elev <b>2573</b>
--	------------------------	---

# VOR/DME RWY 35

BIG SPRING McMAHON-WRINKLE (BPG)

<p><b>▼</b> When VGSI inoperative, circling Rwy 6 NA at night. Circling NA east of Rwy 17-35. VDP NA when using Midland Intl altimeter setting. When local altimeter setting not received, use Midland Intl altimeter setting and increase all MDA 140 feet, increase S-35 Cats C and D and circling Cats C and D visibility ¼ mile.</p> <p><b>▲</b></p>	<p>MISSED APPROACH: Climb to 4500 direct to BGS VORTAC and hold.</p>	
<p>AWOS-3 <b>118.025</b></p>	<p>FORT WORTH CENTER <b>133.7 350.2</b></p>	<p>UNICOM <b>122.8 (CTAF)</b></p>



CATEGORY	A	B	C	D
S-35	3080-1	517 (600-1)	3080-1½ 517 (600-1½)	3080-1¾ 517 (600-1¾)
CIRCLING	3080-1	507 (600-1)	3080-1½ 507 (600-1½)	3140-2 567 (600-2)

SC-2, 07 FEB 2013 to 07 MAR 2013

SC-2, 07 FEB 2013 to 07 MAR 2013