


VORTAC BGS 114.3 Chan 90	APP CRS 180°	Rwy Idg 8802 TDZE 2562 Apt Elev 2573
--	------------------------	---


VOR/DME RWY 17

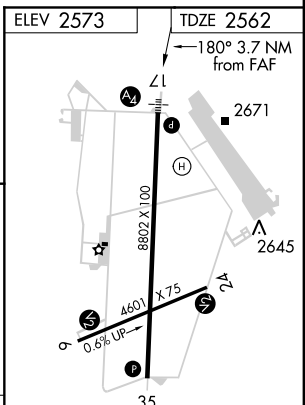
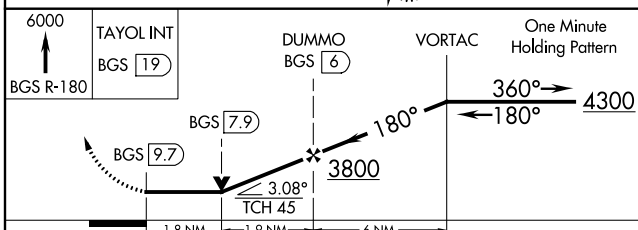
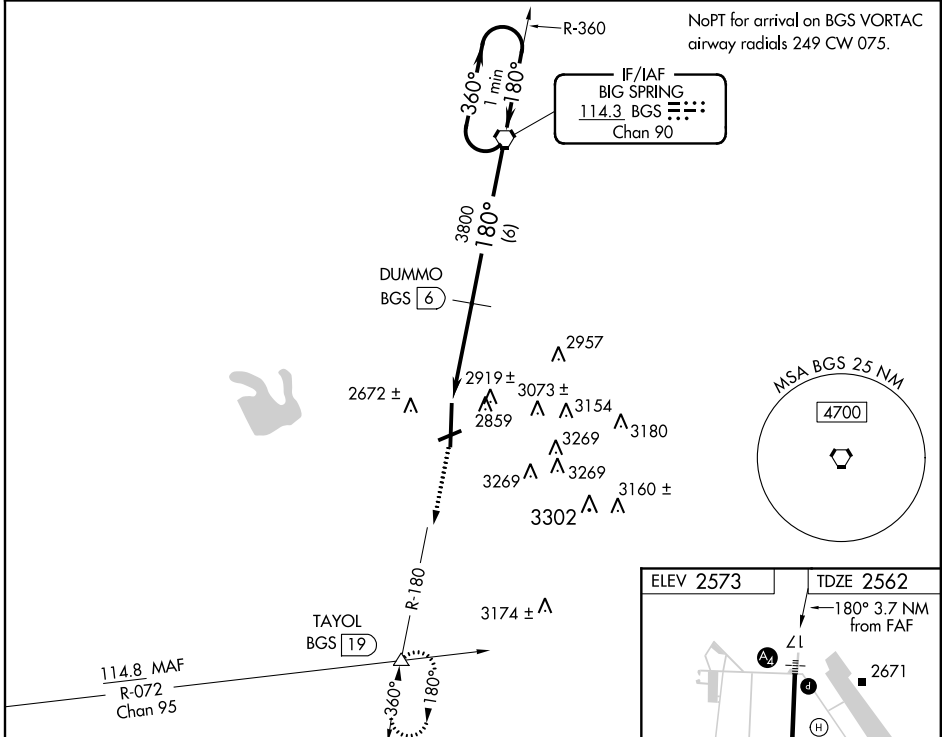
BIG SPRING McMAHON-WRINKLE (BPG)

⚠ When VGSI inoperative, circling Rwy 6 NA at night. Circling NA east of Rwy 17-35. Inoperative table does not apply to S-17 Cat C, when using Midland Intl altimeter setting inoperative table does not apply to S-17 Cat B. VDP NA when using Midland Intl altimeter setting. When local altimeter setting not received, use Midland Intl altimeter setting and increase all MDA 140 feet, increase S-17 Cats B, C, and D and circling Cats C and D visibility ½ mile, circling Cat B visibility ¼ mile.


SSALS 

MISSED APPROACH: Climb to 6000 via BGS VORTAC R-180 to TAYOL INT/BGS 19 DME and hold, continue climb-in-hold to 6000.

AWOS-3 118.025	FORT WORTH CENTER 133.7 350.2	UNICOM 122.8 (CTAF) 
--------------------------	---	---



CATEGORY	A	B	C	D
S-17	3180-¾ 618 (700-¾)		3180-1¾ 618 (700-1¾)	3180-2 618 (700-1)
CIRCLING	3180-1 607 (700-1)		3180-1¾ 607 (700-1¾)	3180-2 607 (700-2)

MIRL Rwy 6-24 and 17-35 

SC-2, 07 FEB 2013 to 07 MAR 2013

SC-2, 07 FEB 2013 to 07 MAR 2013