

WAAS CH 99418 W35A	APP CRS 355°	Rwy Idg TDZE Apt Elev	8802 2563 2573
--	------------------------	-----------------------------	---

RNAV (GPS) RWY 35

BIG SPRING McMAHON-WRINKLE (BPG)

⚠ Circling NA east of Rwy 17-35. Baro-VNAV NA when using Midland Intl altimeter setting. For uncompensated Baro-VNAV systems, LNAV/VNAV NA below -20°C (-4°F) or above 43°C (109°F).
⚠ DME/DME RNP-0.3 NA. VDP NA with Midland Intl altimeter setting. When local altimeter setting not received, use Midland Intl altimeter setting and increase all DA 130 feet and all MDA 140 feet and LPV all Cats visibility ¼ mile, LNAV/VNAV all Cats visibility ½ mile, LNAV Cat C and D visibility ½ mile and Circling Cat C and D visibility ¼ mile.

MISSED APPROACH:
Climb to 5200 direct YALUT and hold.

AWOS-3
118.025

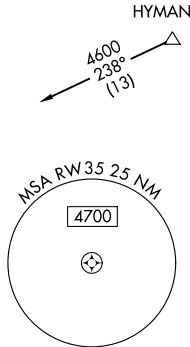
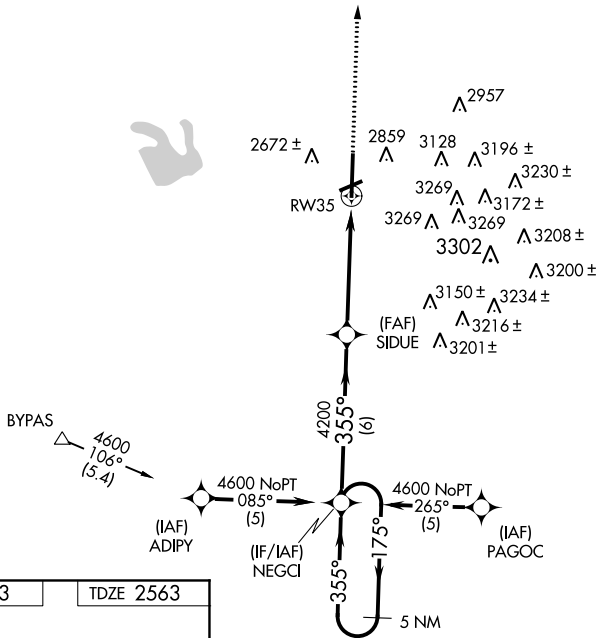
FORT WORTH CENTER
133.7 350.2

UNICOM
122.8 (CTAF) **📻**

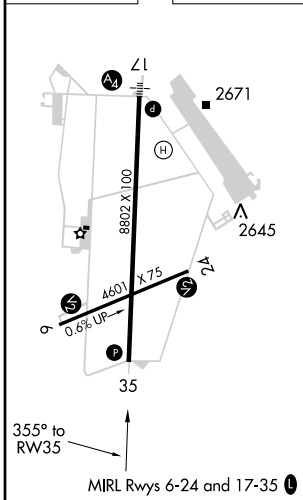
SC-2, 07 FEB 2013 to 07 MAR 2013

SC-2, 07 FEB 2013 to 07 MAR 2013

MISSED APCH FIX



ELEV 2573 TDZE 2563



5 NM Holding Pattern	NEGCI	*LNAV only	5200	YALUT
4600	←175°	→355°	355°	4200
GS 3.00° TCH 36			4200	*1.5 NM to RWY35
			6 NM	3.5 NM
				1.5 NM
CATEGORY	A	B	C	D
LPV DA		2813-1	250 (300-1)	
LNAV/VNAV DA		2979-1½	416 (500-1½)	
LNAV MDA	3060-1	497 (500-1)	3060-1¼ 497 (500-1¼)	3060-1½ 497 (500-1½)
CIRCLING	3060-1	487 (500-1)	3060-1½ 487 (500-1½)	3140-2 567 (600-2)