

WAAS CH <b>97618</b> <b>W17A</b>	APP CRS <b>175°</b>	Rwy Idg TDZE Apt Elev	<b>8802</b> <b>2562</b> <b>2573</b>
--	------------------------	-----------------------------	---

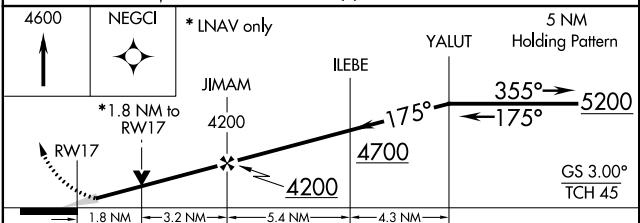
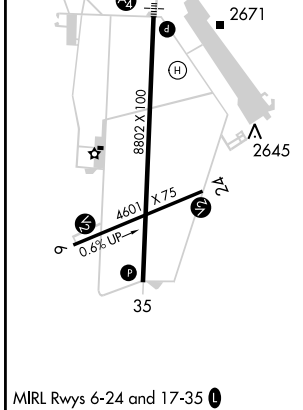
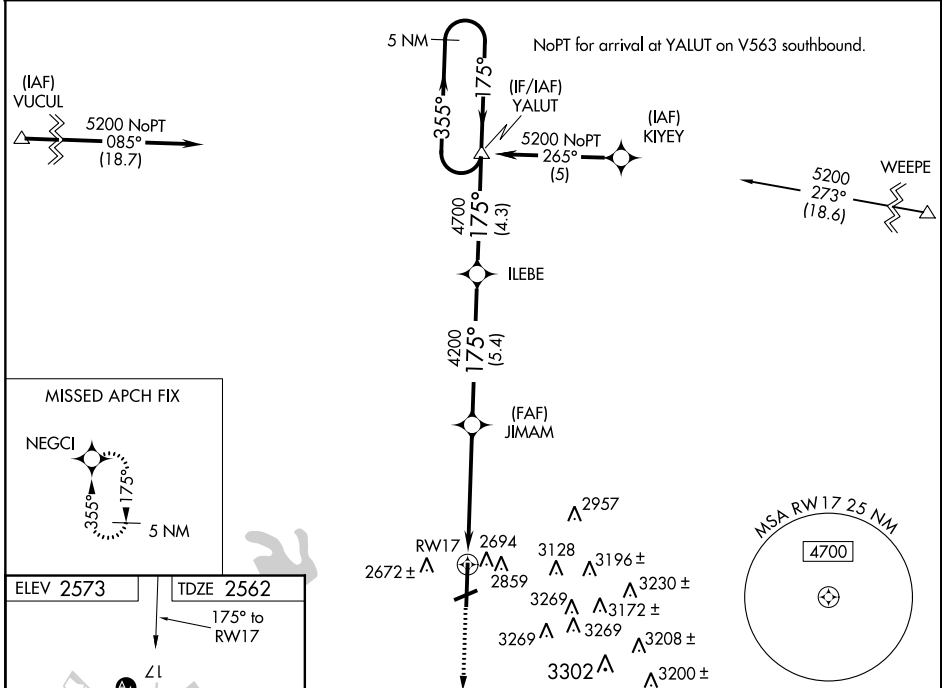
# RNAV (GPS) RWY 17

BIG SPRING McMAHON-WRINKLE (BPG)

**⚠** Circling NA east of Rwy 17-35. Inoperative table does not apply to LNAV/VNAV and LNAV Cat C. DME/DME RNP-0.3 NA. When local altimeter setting not received, use Midland Infil altimeter setting and increase all DA 130 feet and all MDA 140 feet and LPV and LNAV/VNAV all Cats visibility 1/2 mile, LNAV Cat C and D visibility 1/2 mile and Circling Cat C visibility 1/2 mile, Cat D visibility 1/4 mile. Baro-VNAV NA when using Midland Infil altimeter setting. VDP NA with Midland Infil altimeter setting. For uncompensated Baro-VNAV systems LNAV/VNAV NA below -20°C (4°F) or above 43°C (109°F).

SSALS  
MISSED APPROACH:  
Climb to 4600 direct  
NEGCI and hold.

AWOS-3 <b>118.025</b>	FORT WORTH CENTER <b>133.7 350.2</b>	UNICOM <b>122.8 (CTAF)</b>
--------------------------	---	-------------------------------



CATEGORY	A	B	C	D
LPV DA	2812-1		250 (300-1)	
LNAV/VNAV DA	3040-1¾		478 (500-1¾)	
LNAV MDA	3160-¾ 598 (600-¾)		3160-1½ 598 (600-1½)	
CIRCLING	3160-1 587 (600-1)		3160-2 587 (600-2)	

SC-2, 07 FEB 2013 to 07 MAR 2013

SC-2, 07 FEB 2013 to 07 MAR 2013