

WAAS CH 50518 W32A	APP CRS 315°	Rwy Idg 10000 TDZE 442 Apt Elev 459
--	------------------------	--

RNAV (GPS) RWY 32R

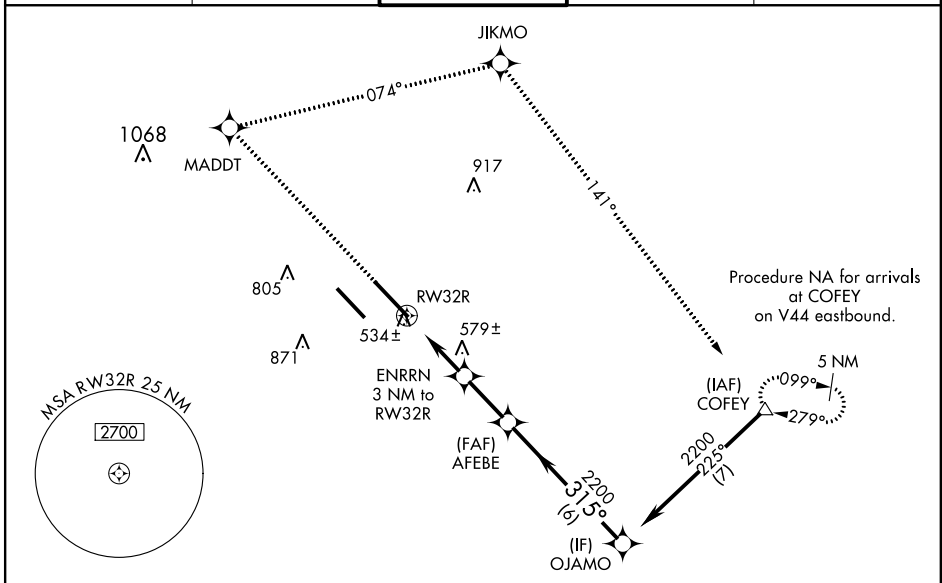
BELLEVILLE/SCOTT AFB/MIDAMERICA (BLV)

▼ For inoperative MALSR, increase LNAV Cat D visibility to 1¼. For uncompensated Baro-VNAV systems, LNAV/VNAV NA below -15°C (5°F) or above 48°C (118°F). DME/DME RNP-0,3 NA. Baro-VNAV and VDP NA when using St. Louis Downtown altimeter setting. When local altimeter setting not received, use St. Louis Downtown altimeter setting and increase all DA 42 feet and all MDA 60 feet, increase LNAV/VNAV all Cats, LNAV Cat C and Circling Cat D visibility ¼ mile.

▲ MALSR

MISSED APPROACH: Climb to 2300 direct MADDT and right turn on track 074° to JIKMO and on track 141° to COFEY and hold.

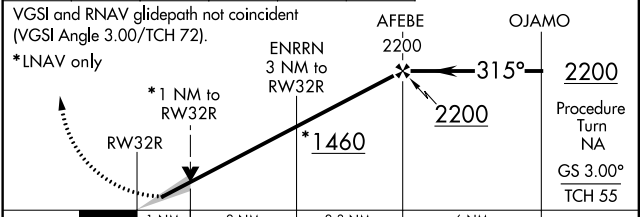
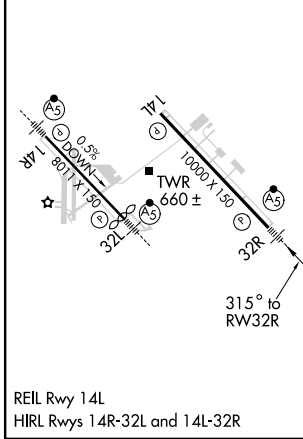
ATIS ★ 128.7 256.7	ST LOUIS APP CON 125.2 281.5	SCOTT TOWER 128.25 253.5	GND CON 119.2 275.8	CLNC DEL 119.875 263.025
------------------------------	--	------------------------------------	-------------------------------	------------------------------------



EC-3, 07 FEB 2013 to 07 MAR 2013

EC-3, 07 FEB 2013 to 07 MAR 2013

ELEV 459	TDZE 442	2300	MADDT	JIKMO	COFEY
		↑	✧	tr 074°	✧
				tr 141°	△



CATEGORY	A	B	C	D
LPV DA		642-½	200 (200-½)	
LNAV/VNAV DA		804-¾	362 (400-¾)	
LNAV MDA	840-½	398 (400-½)		840-1 398 (400-1)
CIRCLING	1000-1 541 (600-1)	1060-1 601 (700-1)	1060-1¾ 601 (700-1¾)	1240-2½ 781 (800-2½)