

PLESS TWO DEPARTURE

EC-3, 07 FEB 2013 to 07 MAR 2013

ATIS*
 128.7 236.7
 CINC DEL
 119.875 263.025
 GND CON
 119.2 275.8
 SCOTT TOWER
 128.25 253.5
 ST LOUIS DEP CON
 125.2 281.5

TAKE-OFF MINIMUMS:
 Rwy 14L, 14R, 32R: Standard.
 32L: 300-1/2 or Standard with minimum
 climb of 250' per NM to 800'.

ST. LOUIS 117.4 STL Chan 121 N38°51.64' W90°28.94'
--

CENTRALIA 115.0 ENL Chan 97

POCKET CITY 113.3 PXV Chan 80

FARMINGTON 115.7 FAM Chan 104

NASHVILLE 114.1 BNA Chan 88 N36°08.22' W88°41.09' L-16, H-6
--

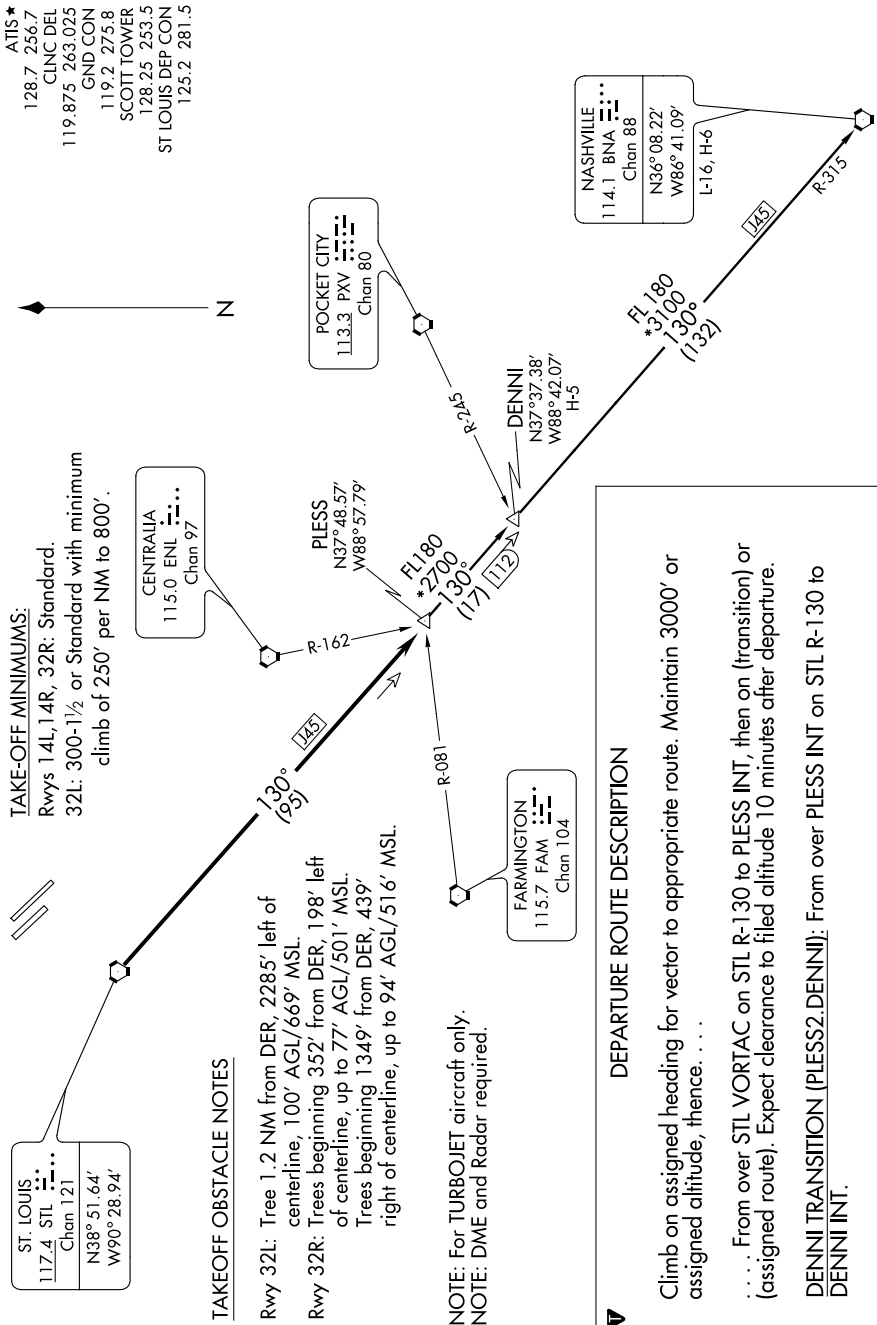
TAKEOFF OBSTACLE NOTES

Rwy 32L: Tree 1.2 NM from DER, 2285' left of centerline, 100' AGL/669' MSL.
 Rwy 32R: Trees beginning 352' from DER, 198' left of centerline, up to 77' AGL/501' MSL. Trees beginning 1349' from DER, 439' right of centerline, up to 94' AGL/516' MSL.

NOTE: For TURBOJET aircraft only.
 NOTE: DME and Radar required.

DEPARTURE ROUTE DESCRIPTION

Climb on assigned heading for vector to appropriate route. Maintain 3000' or assigned altitude, thence
 From over STL VORTAC on STL R-130 to PLESS INT, then on (transition) or (assigned route). Expect clearance to filed altitude 10 minutes after departure.
DENNI TRANSITION (PLESS2.DENNI): From over PLESS INT on STL R-130 to DENNI INT.
NASHVILLE TRANSITION (PLESS2.BNA): From over PLESS INT on STL R-130 to DENNI INT then on STL R-130 and BNA R-315 to BNA VORTAC.



NOTE: Chart not to scale.

PLESS TWO DEPARTURE

EC-3, 07 FEB 2013 to 07 MAR 2013