

# OZARK FOUR DEPARTURE

EC-3, 07 FEB 2013 to 07 MAR 2013

ATIS\*  
 128.7 236.7  
 CLNC DEL  
 119.875 263.025  
 GND CON  
 119.2 275.8  
 SCOTT TOWER  
 128.25 253.5  
 ST LOUIS DEP CON  
 125.2 281.5

### TAKE-OFF MINIMUMS:

Rwys 14L, 14R, 32R: Standard.  
 32L: 300-1½ or Standard with minimum  
 climb of 250' per NM to 800'.

NOTE: Chart not to scale.

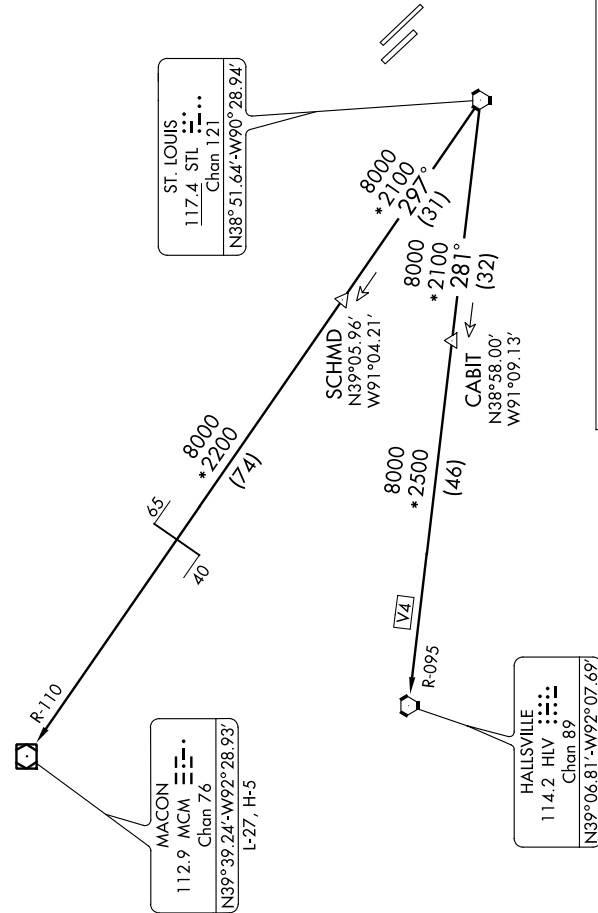
### DEPARTURE ROUTE DESCRIPTION

Climb on assigned heading for vector to appropriate route. Maintain 3000' or assigned altitude, thence. . . .

. . . . (transition) expect clearance to filed altitude 10 minutes after departure.

HALLSVILLE TRANSITION (OZARK4.HLV): From over STL VORTAC on STL R-281 to CABIT INT then on STL R-281 and HLV R-095 to HLV VORTAC.

MACON TRANSITION (OZARK4.MCM): From over STL VORTAC on STL R-297 to SCHMD INT then on STL R-297 and MCM R-110 to MCM VOR/DME.



### TAKEOFF OBSTACLE NOTES

Rwy 32L: Tree 1.2 NM from DER, 2285' left of centerline, 100' AGL/669' MSL.  
 Rwy 32R: Trees beginning 352' from DER, 198' left of centerline, up to 77' AGL/501' MSL.  
 Trees beginning 1349' from DER, 439' right of centerline, up to 94' AGL/516' MSL.

NOTE: DME and RADAR REQUIRED

EC-3, 07 FEB 2013 to 07 MAR 2013