

BUDD ONE ARRIVAL (RNAV)

ST LOUIS APP CON

119.15 335.5

SPIRIT OF ST LOUIS ATIS

134.8

ST LOUIS DOWNTOWN ATIS

121.45

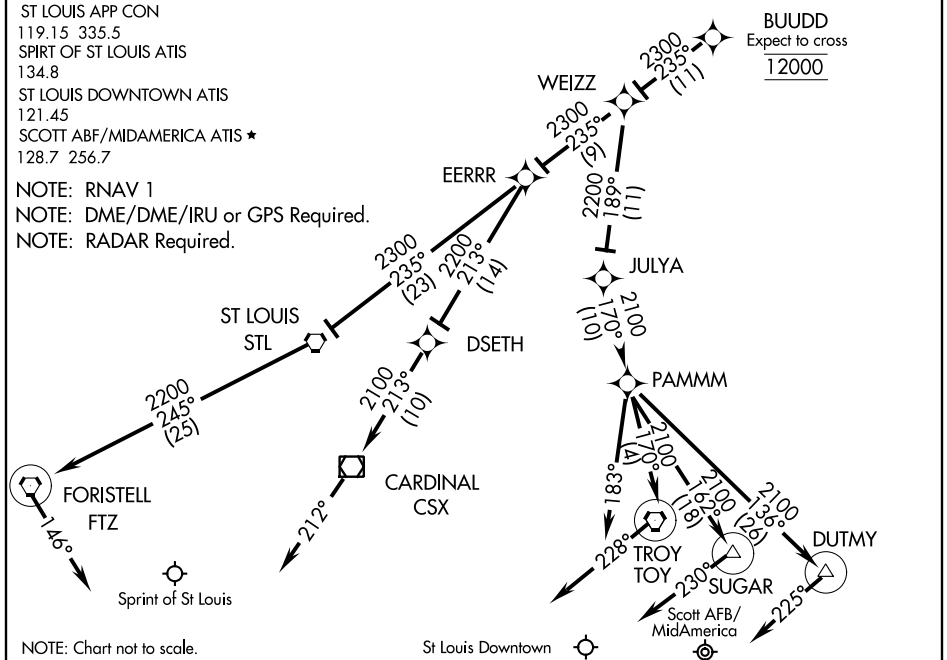
SCOTT AFB/MIDAMERICA ATIS ★

128.7 256.7

NOTE: RNAV 1

NOTE: DME/DME/IRU or GPS Required.

NOTE: RADAR Required.



NOTE: Chart not to scale.

St Louis Downtown

ARRIVAL ROUTE DESCRIPTION

SPIRIT OF ST LOUIS:

Landing Rwy 8L/R: From BUDD on track 235° to WEIZZ, then on track 235° to STL VORTAC, then on track 245° to FTZ VORTAC. Expect radar vectors prior to FTZ VORTAC, if no heading received track 146°.

Landing Rwy 26 L/R: From BUDD on track 235° to WEIZZ, then on track 235° to EERRR, then on track 213° to DSETH, then track 213° to CSX VOR/DME. Expect radar vectors prior to CSX VOR/DME, if no heading track 212°.

SCOTT AFB/MID AMERICA:

Landing Rwy 14 L/R: From BUDD on track 235° to WEIZZ, then on track 189° to JULYA, then on track 170° to PAMMM, then on track 170° to TOY VORTAC. Expect radar vectors prior to TOY VORTAC, if no heading received, track 228°.

Landing Rwy 32 L/R: From BUDD on track 235° to WEIZZ, then on track 189° to JULYA, then on track 170° to PAMMM, then on track 136° to DUTMY. Expect radar vectors prior to DUTMY, if no heading received, track 225°.

ST. LOUIS DOWNTOWN:

Landing Rwy 12 R: From BUDD on track 235° to WEIZZ, then on track 189° to JULYA, then on track 170° to PAMMM. Expect radar vectors prior to PAMMM, if no heading received, track 183°.

Landing Rwy 30 L/R: From BUDD on track 235° to WEIZZ, then on track 189° to JULYA, then on track 170° to PAMMM, then on track 162° to SUGAR, Expect radar vectors prior to SUGAR, if no heading received, track 230°.

BUDD ONE ARRIVAL (RNAV)

EC-3, 07 FEB 2013 to 07 MAR 2013

EC-3, 07 FEB 2013 to 07 MAR 2013