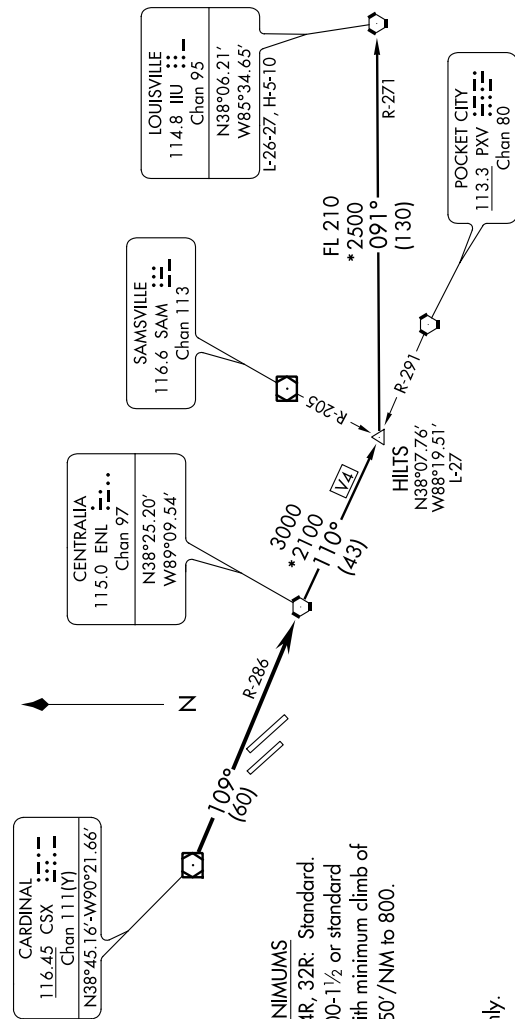


BLUES THREE DEPARTURE

SL-46 (FAA)

EC-3, 07 FEB 2013 to 07 MAR 2013



NOTE: Chart not to scale.

ATIS * 128.7 256.7
 CLNC DEL 119.875 225.4 263.025
 GND CON 119.2 275.8
 SCOTT TOWER * 128.25 253.5
 ST LOUIS DEP CON 125.2 281.5

TAKEOFF MINIMUMS

Rwys 14L, 14R, 32R: Standard.
 Rwy 32L: 300-1½ or standard with minimum climb of 250'/NM to 800'.

NOTE: RADAR required.
 NOTE: For Turbojet aircraft only.

TAKEOFF OBSTACLE NOTES

Rwy 32L: Trees 1.2 NM from DER, 2285' left of centerline, 100' AGL/669' MSL.
 Rwy 32R: Trees beginning 352' from DER, 198' left of centerline, up to 77' AGL/501' MSL.
 Trees beginning 1349' from DER, 439' right of centerline, up to 94' AGL/516' MSL.

DEPARTURE ROUTE DESCRIPTION

Climb on assigned heading for vector to appropriate route, maintain 2500 or assigned altitude, thence
 from over CSX VOR/DME on CSX R-109 and ENL R-286 to ENL VORTAC. Then on (transition) or (assigned route).
 Expect filed altitude 10 minutes after departure.

HILTS TRANSITION (BLUES3.HILTS): From over ENL VORTAC on ENL R-110 and PXV R-291 to HILTS INT.
 LOUISVILLE TRANSITION (BLUES3.IIU): From over ENL VORTAC on ENL R-110 and PXV R-291 to HILTS INT, then on IIU R-271 to IIU VORTAC.