

WAAS CH <b>86223</b> <b>W34A</b>	APP CRS <b>340°</b>	Rwy Idg THRE <b>170</b> Apt Elev <b>170</b>	<b>6701</b>
--	------------------------	---	-------------

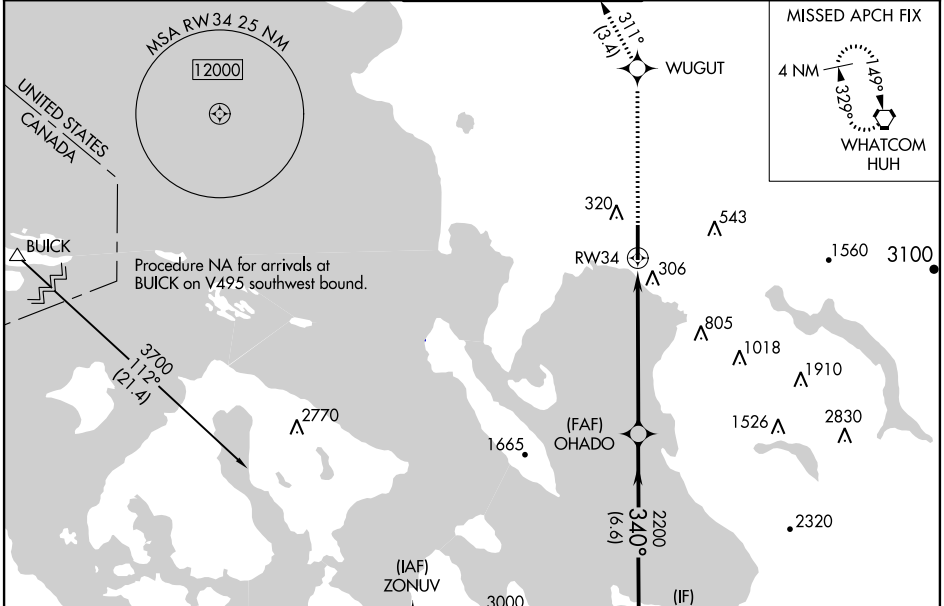
# RNAV (GPS) Y RWY 34

BELLINGHAM INTL (BLI)

**⚠** For uncompensated Baro-VNAV systems, LNAV/VNAV NA below -11°C (13°F) or above 42°C (107°F). DME/DME RNP-0.3 NA. Baro-VNAV and VDP NA when using Friday Harbor altimeter setting. When local altimeter setting not received, use Friday Harbor altimeter setting and increase all DAs 67 feet and all MDAs 80 feet; increase LPV all Cats visibility to 1 mile; increase LNAV/VNAV all Cats visibility to 1½ mile; and increase LNAV Cats C, D visibility to 1¾ mile. Visibility reduction by helicopters NA.

**MISSED APPROACH:** Climb to 3000 direct WUGUT and on track 311° to HUH VORTAC and hold, continue climb-in-hold to 3000.

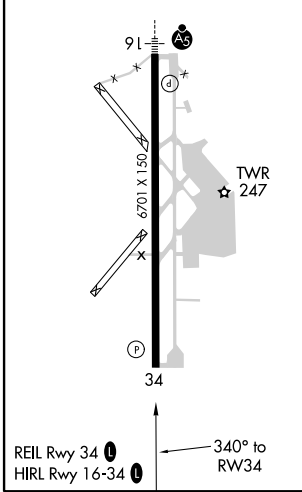
ATIS <b>134.45</b>	VICTORIA TERMINAL APP CON <b>132.7 290.8</b>	BELLINGHAM TOWER ★ <b>124.9 (CTAF) 0 379.3</b>	GND CON <b>127.4 379.3</b>	UNICOM <b>122.95</b>
-----------------------	---	---	-------------------------------	-------------------------



NW-1, 07 FEB 2013 to 07 MAR 2013

NW-1, 07 FEB 2013 to 07 MAR 2013

ELEV 170	<b>D</b>	THRE 170
----------	----------	----------



Procedure NA for arrivals at IWANY on V23 southeast bound.

TUBTY	OHADO	WUGUT	HUH	
3000	2200	3000	311°	
GS 3.00°		*1.1 NM to RWY34	*LNAV only	
TCH 50				
	6.6 NM	5.1 NM	1.1 NM	
CATEGORY	A	B	C	D
LPV DA	420-¾ 250 (300-¾)			
LNAV/VNAV DA	467-1 297 (300-1)			
LNAV MDA	580-1 410 (500-1)			
CIRCLING	620-1 450 (500-1)		620-1½ 720-2 450 (500-1½) 550 (600-2)	