

| | | |
|--|------------------------|---|
| WAAS CH 45999 W16A | APP CRS 160° | Rwy Idg THRE 163 Apt Elev 170 |
|--|------------------------|---|

RNAV (GPS) Y RWY 16

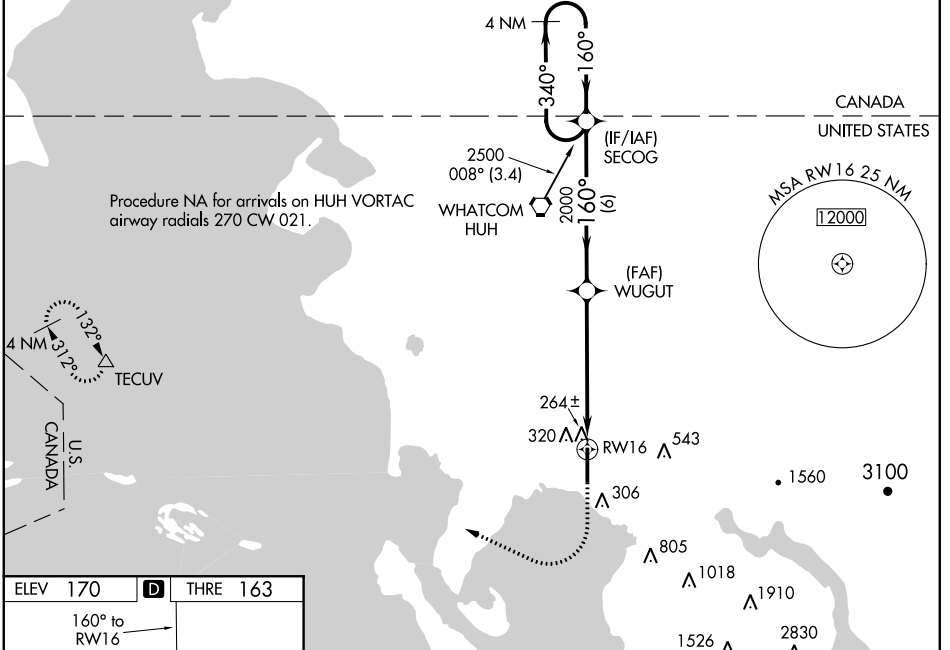
BELLINGHAM INTL (BLI)

⚠ For uncompensated Baro-VNAV systems, LNAV/VNAV NA below -11°C (13°F) or above 42°C (107°F). For inoperative MALS, increase LNAV/VNAV all Cats visibility to RVR 6000 and increase LNAV Cats C, D visibility to RVR 5000. DME/DME RNP-0.3 NA. Baro-VNAV and VDP NA when using Friday Harbor altimeter setting. When local altimeter setting not received, use Friday Harbor altimeter setting and increase all DA 67 feet and all MDA 80 feet; increase LNAV/VNAV all Cats and LNAV Cats C/D visibility to RVR 4500.

MALS

MISSED APPROACH:
Climb to 700 then climbing right turn to 2000 direct TECUV and hold.

| | | | | |
|-----------------------|---|---|-------------------------------|-------------------------|
| ATIS 134.45 | VICTORIA TERMINAL APP CON 132.7 290.8 | BELLINGHAM TOWER * 124.9 (CTAF) 0 379.3 | GND CON 127.4 379.3 | UNICOM 122.95 |
|-----------------------|---|---|-------------------------------|-------------------------|

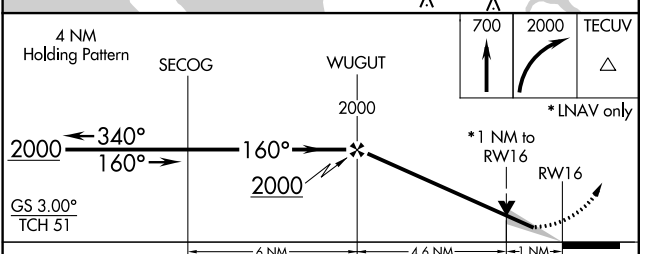


NW-1, 07 FEB 2013 to 07 MAR 2013

NW-1, 07 FEB 2013 to 07 MAR 2013

| | | |
|----------|----------|----------|
| ELEV 170 | D | THRE 163 |
|----------|----------|----------|

REIL Rwy 34 **⓪**
HIRL Rwy 16-34 **⓪**



| CATEGORY | A | B | C | D |
|--------------|--------|-------------|------------------------|----------------------|
| LPV DA | | 363/24 | 200 (200-½) | |
| LNAV/VNAV DA | | 491/32 | 328 (400-¾) | |
| LNAV MDA | 540/24 | 377 (400-½) | 540/35 | 377 (400-¾) |
| CIRCLING | 620-1 | 450 (500-1) | 620-1½ 450 (500-1½) | 720-2 550 (600-2) |