

APP CRS <b>340°</b>	Rwy Idg <b>6701</b>
	THRE <b>170</b>
	Apt Elev <b>170</b>

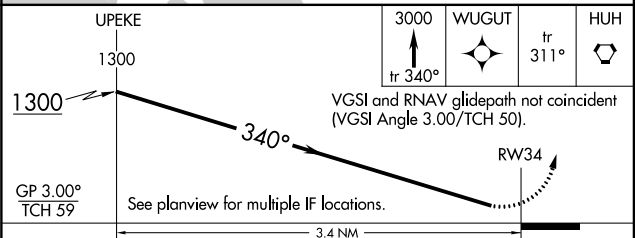
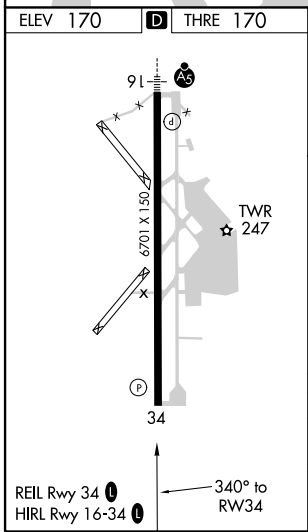
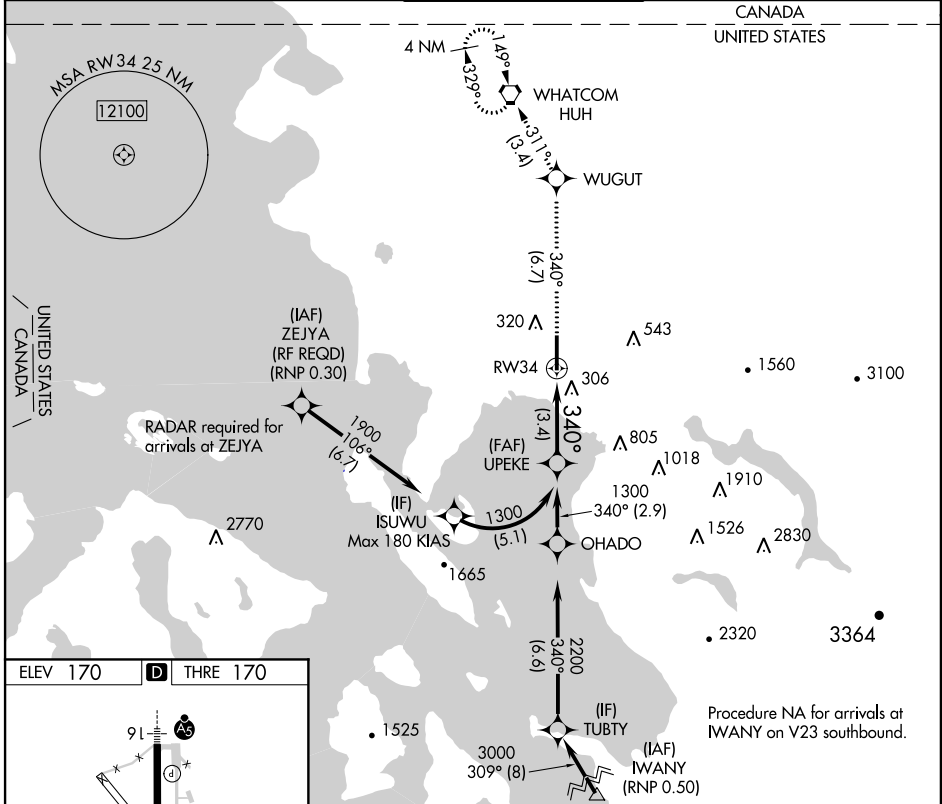
# RNAV (RNP) Z RWY 34

BELLINGHAM INTL (BLI)

▼ For uncompensated Baro-VNAV systems, procedure NA below -11°C (13°F) or above 47°C (116°F). GPS required. When local altimeter setting not received, procedure NA.

MISSED APPROACH: Climb to 3000 on track 340° to WUGUT and on track 311° to HUH VORTAC and hold, continue climb-in hold to 3000.

ATIS <b>134.45</b>	VICTORIA TERMINAL APP CON <b>132.7 290.8</b>	BELLINGHAM TOWER ★ <b>124.9 (CTAF) 0 379.3</b>	GND CON <b>127.4 379.3</b>	UNICOM <b>122.95</b>
-----------------------	---	---	-------------------------------	-------------------------



CATEGORY	A	B	C	D
RNP 0.30 DA	615-1½ 445 (500-1½)			

**AUTHORIZATION REQUIRED**

NW-1, 07 FEB 2013 to 07 MAR 2013

NW-1, 07 FEB 2013 to 07 MAR 2013