


APP CRS	Rwy Idg	6701
160°	THRE	163
	Apt Elev	170

RNAV (RNP) Z RWY 16

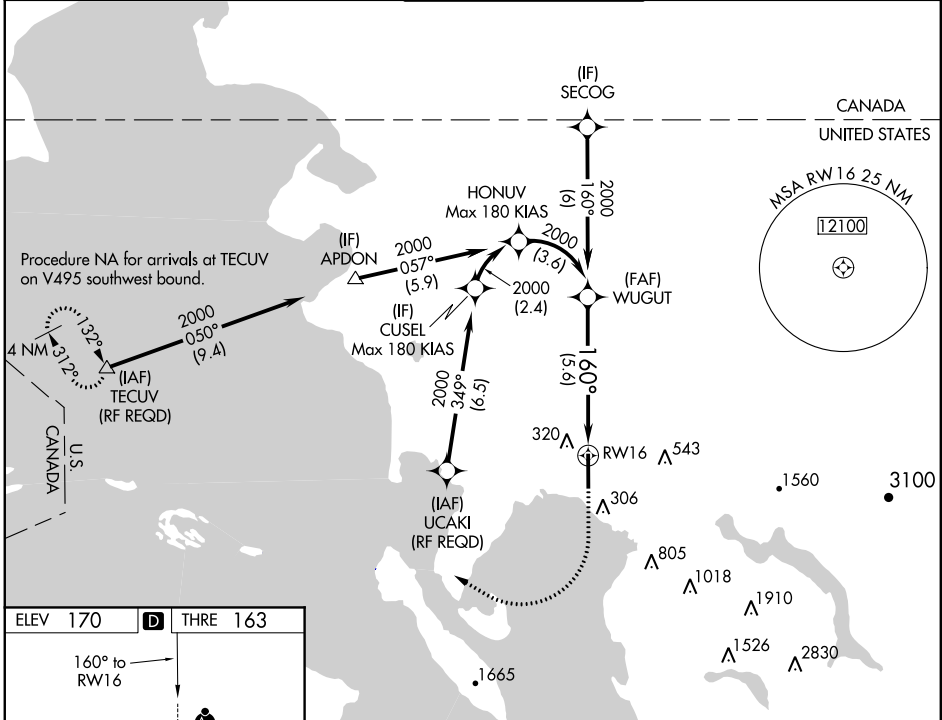
BELLINGHAM INTL (BLI)

▽ For uncompensated Baro-VNAV systems, procedure NA below -11°C (13°F) or above 48°C (118°F). For inoperative MALSR, increase RNP 0.27 all Cats visibility to RVR 4500, and increase RNP 0.30 all Cats visibility to 1 3/8 mile. GPS required. When local altimeter setting not received, procedure NA.

MALSR


MISSED APPROACH: Climb to 700 then climbing right turn to 2000 direct TECUV and hold.

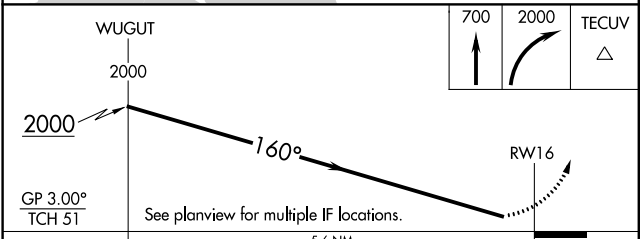
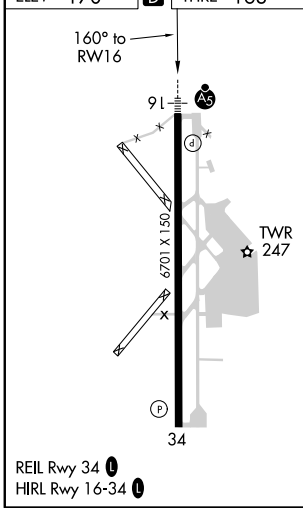
ATIS 134.45	VICTORIA TERMINAL APP CON 132.7 290.8	BELLINGHAM TOWER ★ 124.9 (CTAF) 0 379.3	GND CON 127.4 379.3	UNICOM 122.95
-----------------------	---	---	-------------------------------	-------------------------



NW-1, 07 FEB 2013 to 07 MAR 2013

NW-1, 07 FEB 2013 to 07 MAR 2013

ELEV 170	D	THRE 163
----------	----------	----------



CATEGORY	A	B	C	D
RNP 0.27 DA		448/40	285 (300-3/4)	
RNP 0.30 DA		576/45	413 (500-7/8)	

AUTHORIZATION REQUIRED