

WAAS CH <b>69530</b> <b>W29A</b>	APP CRS <b>290°</b>	Rwy Idg THRE Apt Elev	<b>5399</b> <b>5382</b> <b>5442</b>
--	------------------------	-----------------------------	---

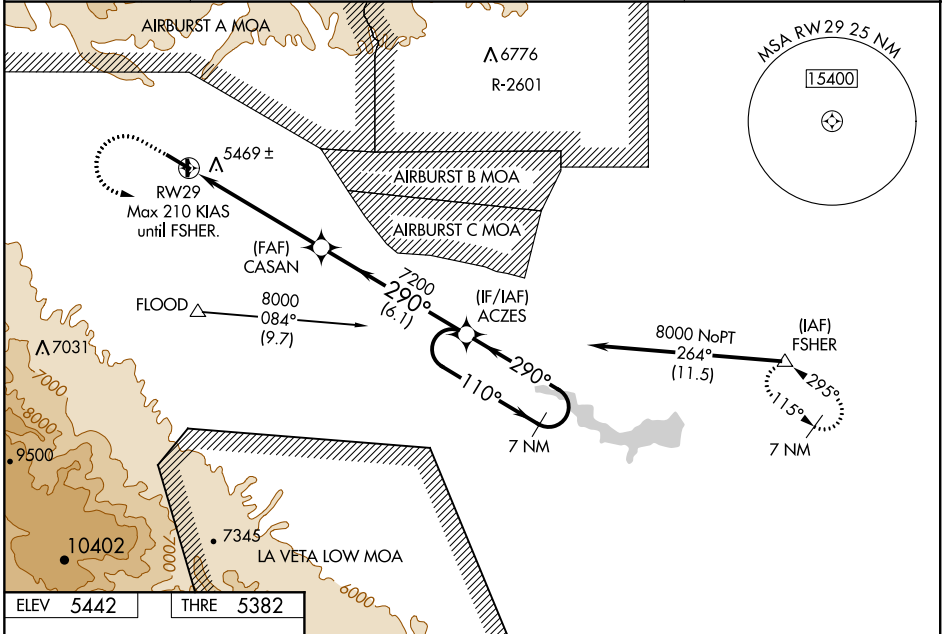
# RNAV (GPS) Y RWY 29

CANON CITY/FREMONT COUNTY (1V6)

**⚠** For uncompensated Baro-VNAV systems, LNAV/VNAV NA below -25°C (-14°F) or above 54°C (130°F). DME/DME RNP-0.3 NA. Visibility reduction by helicopters NA. Baro-VNAV and VDP NA when using Pueblo Memorial altimeter setting. When local altimeter setting is not received use Pueblo Memorial altimeter setting and increase DAs 344 and all visibilities 1 ¼ mile; increase all MDAs 360 feet and LNAV Cat C visibility 1 mile, Circling Cat A, B visibility ¼ mile, Cat C visibility 1 mile.

MISSED APPROACH: Climb to 5900 then climbing left turn to 8000 direct FSHER and hold.

AWOS-3 <b>120.025</b>	DENVER APP CON <b>120.1 290.5</b>	DENVER CENTER <b>128.375 379.95</b>	UNICOM <b>122.8 (CTAF)</b> <b>📻</b>
--------------------------	--------------------------------------	--	--

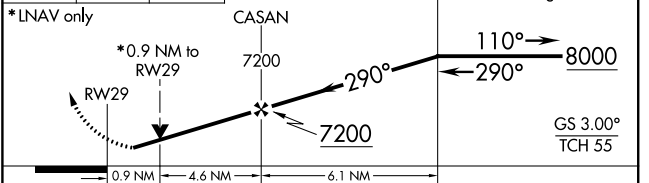
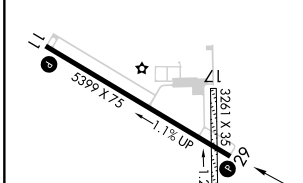


SW-1, 07 FEB 2013 to 07 MAR 2013

SW-1, 07 FEB 2013 to 07 MAR 2013

ELEV <b>5442</b>	THRE <b>5382</b>
------------------	------------------

5900 8000 FSHER VGSI and RNAV glidepath not coincident (VGSI Angle 3.00/TCH 32).



CATEGORY	A	B	C	D
LPV DA	5632- <sup>3</sup> / <sub>4</sub>	250 (200- <sup>3</sup> / <sub>4</sub> )		NA
LNAV/VNAV DA	5764-1 <sup>1</sup> / <sub>4</sub>	382 (400-1 <sup>1</sup> / <sub>4</sub> )		NA
LNAV MDA	5720-1	338 (300-1)		NA
CIRCLING	5920-1	478 (500-1)	5960-1 <sup>1</sup> / <sub>2</sub> 518 (600-1 <sup>1</sup> / <sub>2</sub> )	NA

REIL Rws 11 and 29 **📻**  
MIRL Rwy 11-29 **📻**