

APP CRS <b>290°</b>	Rwy Idg <b>5399</b>
	THRE <b>5382</b>
	Apt Elev <b>5442</b>

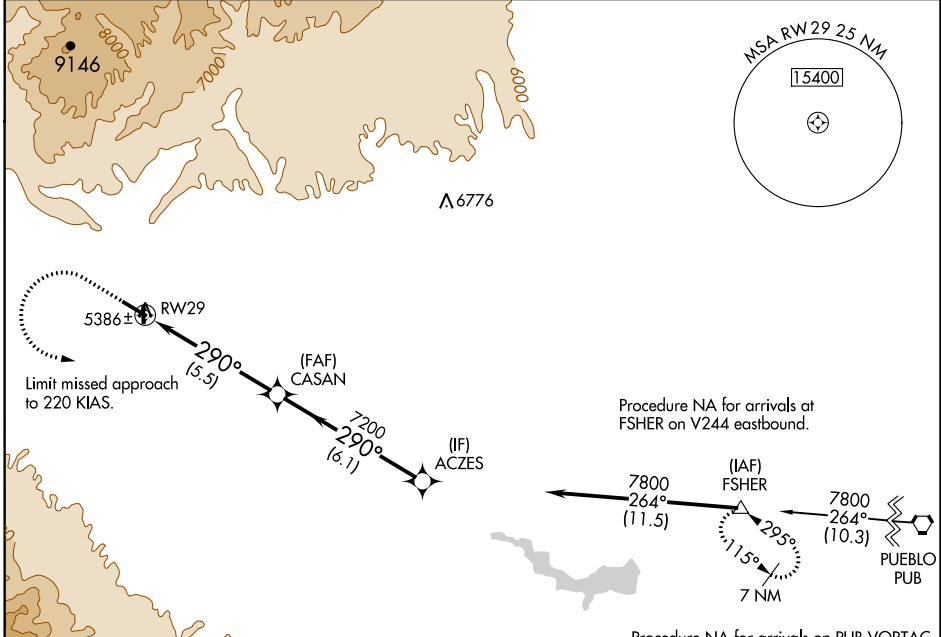
# RNAV (RNP) Z RWY 29

CANON CITY/ FREMONT COUNTY (1V6)

**▽** For uncompensated Baro-VNAV systems, procedure NA below -25° C (-14°F) or above 54°C (130°F). GPS required. When VGSI inop, Cat C procedure NA at night.

**MISSED APPROACH:** Climb to 5900 then climbing left turn to 8000 direct FSHER and hold.

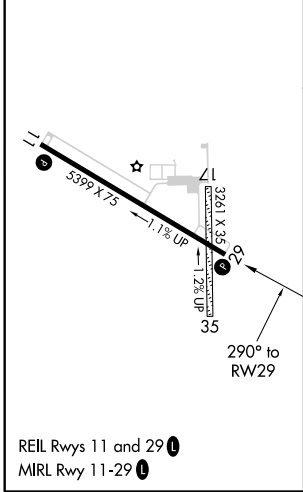
AWOS-3 <b>120.025</b>	DENVER APP CON <b>120.1 290.5</b>	DENVER CENTER <b>128.375 379.95</b>	UNICOM <b>122.8 (CTAF)</b>
--------------------------	--------------------------------------	--	-------------------------------



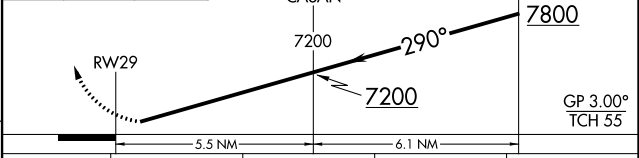
SW-1, 07 FEB 2013 to 07 MAR 2013

SW-1, 07 FEB 2013 to 07 MAR 2013

ELEV 5442	THRE 5382
-----------	-----------



5900 8000 FSHER VGSI and RNAV glidepath not coincident (VGSI Angle 3.00/TCH 32)



CATEGORY	A	B	C	D
RNP 0.21 DA	5632-3/4	250 (200-3/4)	5632-1 250 (200-1)	NA
RNP 0.30 DA	5781-1 1/4 399 (400-1 1/4)			NA

## AUTHORIZATION REQUIRED