

APP CRS <b>110°</b>	Rwy Idg <b>5399</b>
	THRE <b>5442</b>
	Apt Elev <b>5442</b>

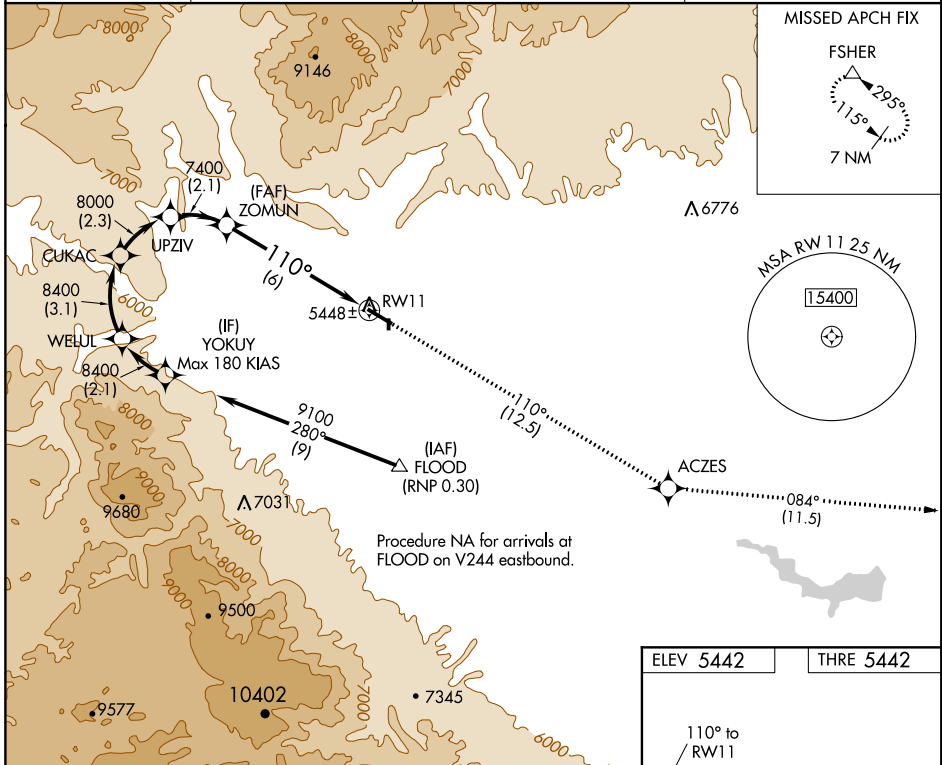
# RNAV (RNP) RWY 11

CANON CITY/ FREMONT COUNTY (1V6)

▼ For uncompensated Baro-VNAV systems, procedure NA below -25°C (-14°F) or above 54°C (130°F). When VGSI inop, procedure NA at night. RF required. GPS required.

MISSED APPROACH: Climb to 8000 on track 110° to ACZES and on track 084° to FSHER and hold.

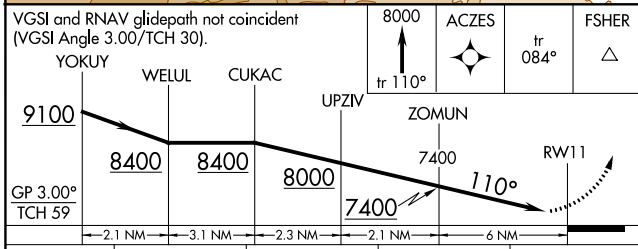
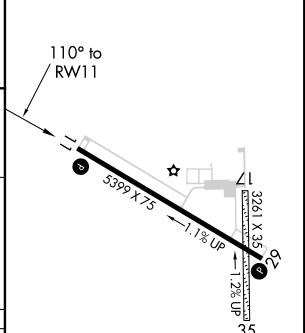
AWOS-3 <b>120.025</b>	DENVER APP CON <b>120.1 290.5</b>	DENVER CENTER <b>128.375 379.95</b>	UNICOM <b>122.8 (CTAF)</b>
--------------------------	--------------------------------------	--	-------------------------------



SW-1, 07 FEB 2013 to 07 MAR 2013

SW-1, 07 FEB 2013 to 07 MAR 2013

ELEV 5442	THRE 5442
-----------	-----------



CATEGORY	A	B	C	D
RNP 0.20 DA	5761-1 319 (400-1)			NA
RNP 0.30 DA	5831-1¼ 389 (400-1¼)			NA

## AUTHORIZATION REQUIRED

REIL Rwy 11 and 29  
MIRL Rwy 11-29