

VOR/DME BPT 114.5 Chan 92	APP CRS 299°	Rwy Idg 3934 TDZE 32 Apt Elev 32
--	------------------------	---

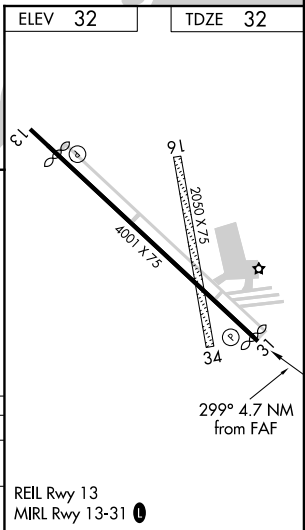
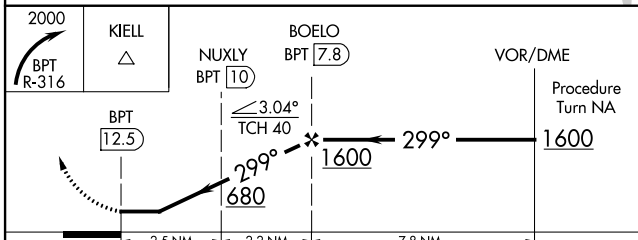
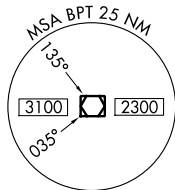
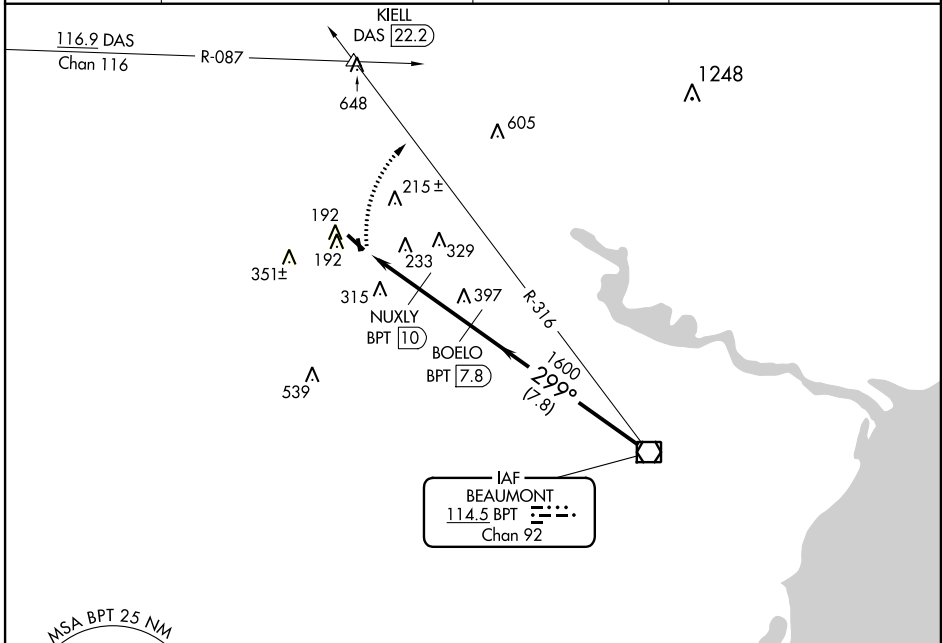
VOR/DME RWY 31

BEAUMONT MUNI (BMT)

NA Use Beaumont-Port Arthur, TX (Jack Brooks Rgnl) altimeter setting: Circling NA Rwy 16-34. Visibility reduction by helicopters NA.

MISSED APPROACH: Climbing right turn to 2000 via BPT R-316 to KIELL INT/DAS 22.2 DME.

AWOS-3P/T 118.425	HOUSTON APP CON 121.3 377.1	CLNC DEL 121.75	UNICOM 123.0 (CTAF) 1
-----------------------------	---------------------------------------	---------------------------	--



CATEGORY	A	B	C	D
S-31	600-1 568 (600-1)	600-1½ 568 (600-1½)	600-1¾ 568 (600-1¾)	600-2 568 (600-2)
CIRCLING	600-1 568 (600-1)	620-1½ 588 (600-1½)	620-2 588 (600-2)	620-2½ 588 (600-2½)

SC-5, 07 FEB 2013 to 07 MAR 2013

SC-5, 07 FEB 2013 to 07 MAR 2013