

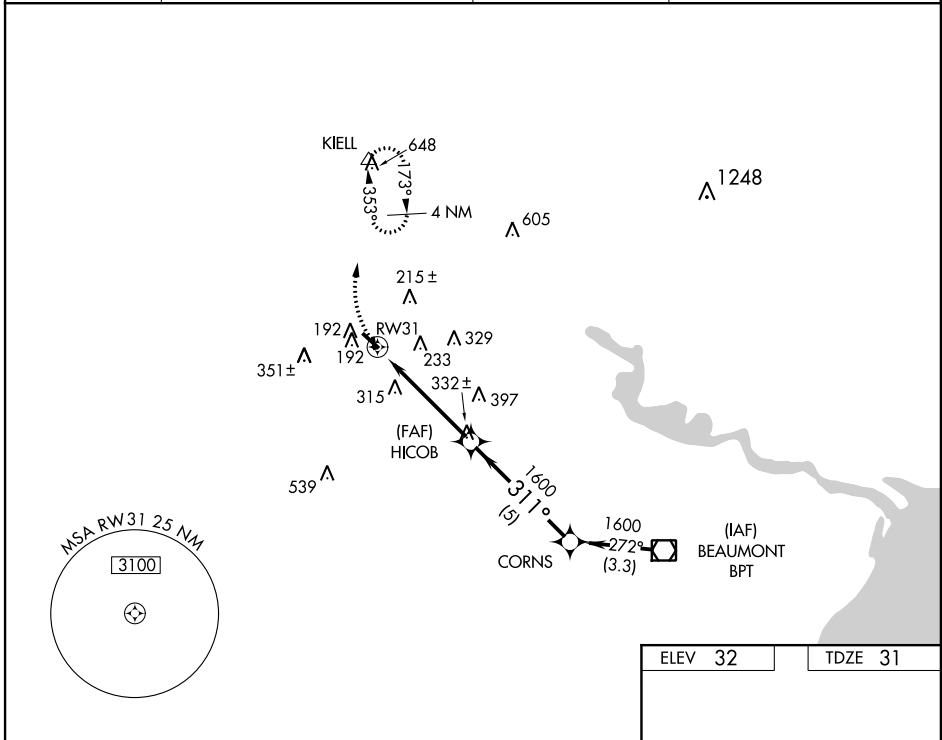
APP CRS 311°	Rwy Idg 3934
	TDZE 31
	Apt Elev 32

RNAV (GPS) RWY 31

BEAUMONT MUNI (BMT)

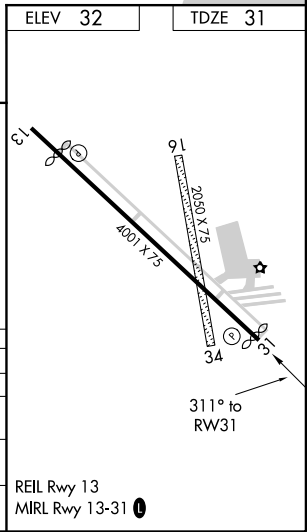
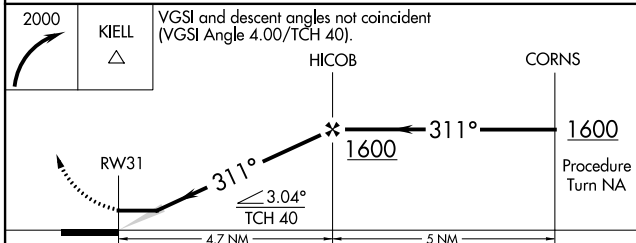
<p>▼ Use Beaumont-Port Arthur, TX (Jack Brooks Rgnl) altimeter setting. Circling NA to Rwy 16-34. DME/DME RNP-0.3 NA. Visibility reduction by helicopters NA.</p>	<p>MISSED APPROACH: Climbing right turn to 2000 direct KIELL WP and hold.</p>
--	--

AWOS-3P/T 118.425	HOUSTON APP CON 121.3 377.1	CLNC DEL 121.75	UNICOM 123.0 (CTAF) ①
-----------------------------	---------------------------------------	---------------------------	--



SC-5, 07 FEB 2013 to 07 MAR 2013

SC-5, 07 FEB 2013 to 07 MAR 2013



CATEGORY	A	B	C	D
GLS PA DA	NA			
LNAV/VNAV DA	NA			
LNAV MDA	600-1	568 (600-1)	600-1½ 568 (600-1½)	600-1¾ 568 (600-1¾)
CIRCLING	600-1	568 (600-1)	620-1½ 588 (600-1½)	720-2¼ 688 (700-2¼)