

APP CRS 128°	Rwy Idg 3669 TDZE 31 Apt Elev 32
------------------------	---

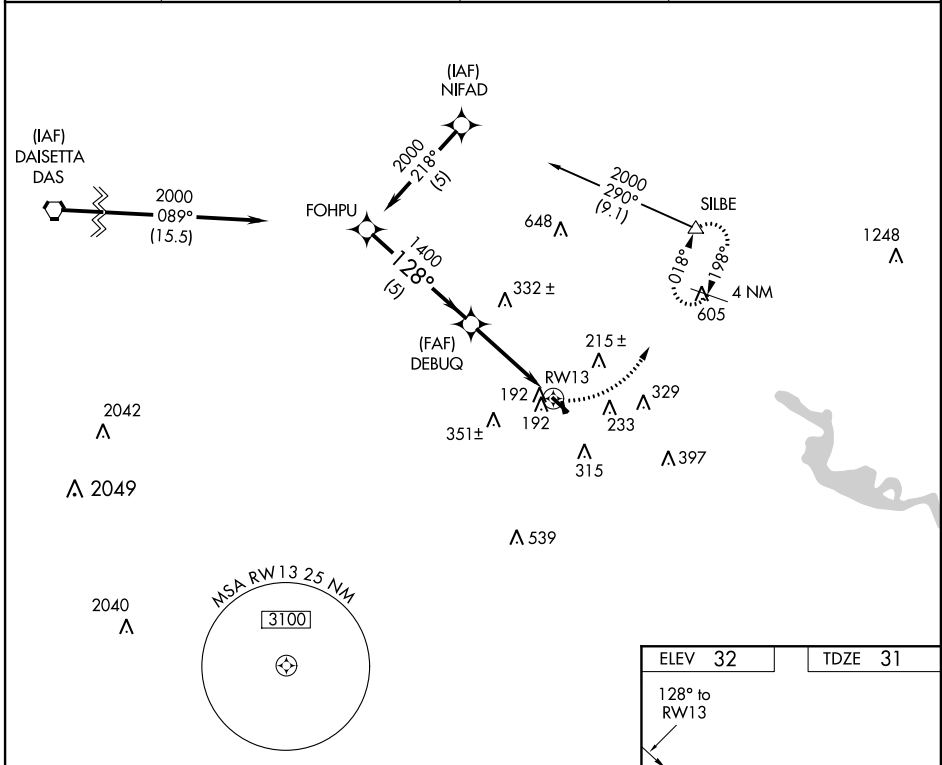
RNAV (GPS) RWY 13

BEAUMONT MUNI (BMT)

▼ Use Beaumont-Port Arthur, TX (Jack Brooks Rgnl) altimeter setting.
▲ NA Circling NA Rwy 16-34. DME/DME RNP-0.3 NA.
 Visibility reduction by helicopters NA.

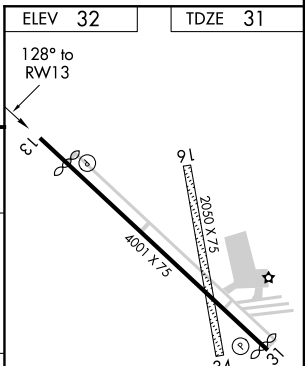
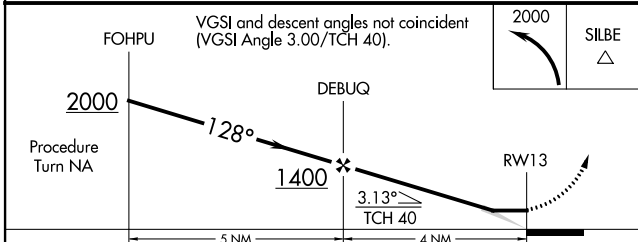
MISSED APPROACH: Climbing left turn to 2000 direct SILBE WP and hold.

AWOS-3P/T 118.425	HOUSTON APP CON 121.3 377.1	CLNC DEL 121.75	UNICOM 123.0 (CTAF) 1
-----------------------------	---------------------------------------	---------------------------	--



SC-5, 07 FEB 2013 to 07 MAR 2013

SC-5, 07 FEB 2013 to 07 MAR 2013



CATEGORY	A	B	C	D
GLS PA DA			NA	
LNAV/VNAV DA			NA	
LNAV MDA	540-1	509 (600-1)	540-1½	509 (600-1½)
CIRCLING	580-1	548 (600-1)	620-1½ 588 (600-1½)	720-2¼ 688 (700-2¼)

REIL Rwy 13
 MIRL Rwy 13-31 **1**