

WAAS CH <b>61220</b> W05A	APP CRS <b>047°</b>	Rwy Idg <b>10004</b> THRE <b>952</b> Apt Elev <b>952</b>
---------------------------------	------------------------	--

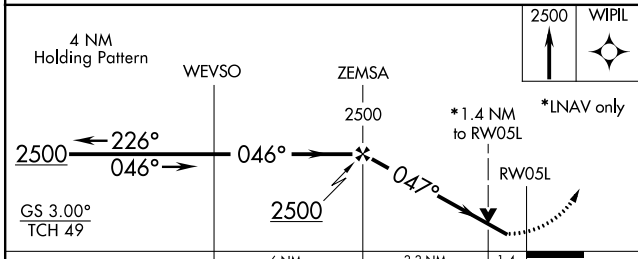
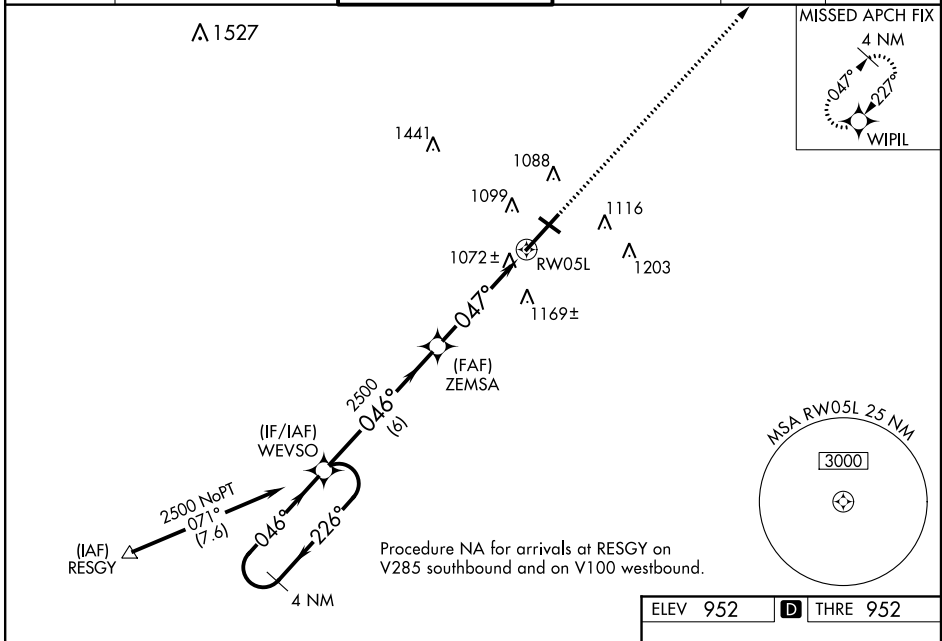
# RNAV (GPS) RWY 5L

BATTLE CREEK / W.K. KELLOGG (BTL)

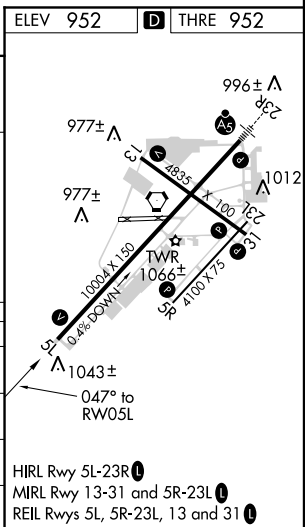
For uncompensated Baro-VNAV systems, LNAV/VNAV NA below -16°C (4°F) or above 37°C (98°F). DME/DME RNP-0.3 NA. Visibility reduction by helicopters NA. When local altimeter setting not received, use Grand Rapids altimeter setting: increase all DA 106 feet and all LPV and LNAV/VNAV visibility 3/8 mile; increase all MDA 120 feet, LNAV Cats C and D visibility 3/8 mile and Circling Cats C and D visibility 1/4 mile. VDP and Baro-VNAV NA when using Grand Rapids altimeter setting. Circling NA to Rwy 5R/23L. When VGSi inoperative, Circling Rwy 13/31 NA at night.

MISSED APPROACH:  
Climb to 2500 direct  
WIPIL and hold.

ATIS <b>128.325</b>	KALAMAZOO APP CON * <b>119.2 239.25</b>	BATTLE CREEK TOWER * <b>126.825 239.025</b>	GND CON <b>121.7 256.875</b>	UNICOM <b>122.95</b>	CTAF <b>126.825</b>
------------------------	--	--	---------------------------------	-------------------------	------------------------



CATEGORY	A	B	C	D
LPV DA		1317-1¼	365 (400-1¼)	
LNAV/VNAV DA		1253-1	301 (400-1)	
LNAV MDA	1440-1	488 (500-1)	1440-1¾	488 (500-1¾)
CIRCLING	1440-1	488 (500-1)	1480-1½	1520-2
			528 (600-1½)	568 (600-2)



EC-1, 07 FEB 2013 to 07 MAR 2013

EC-1, 07 FEB 2013 to 07 MAR 2013