

WAAS CH <b>87026</b> W31A	APP CRS <b>310°</b>	Rwy Idg THRE Apt Elev	<b>4835</b> <b>929</b> <b>952</b>
---------------------------------	------------------------	-----------------------------	---

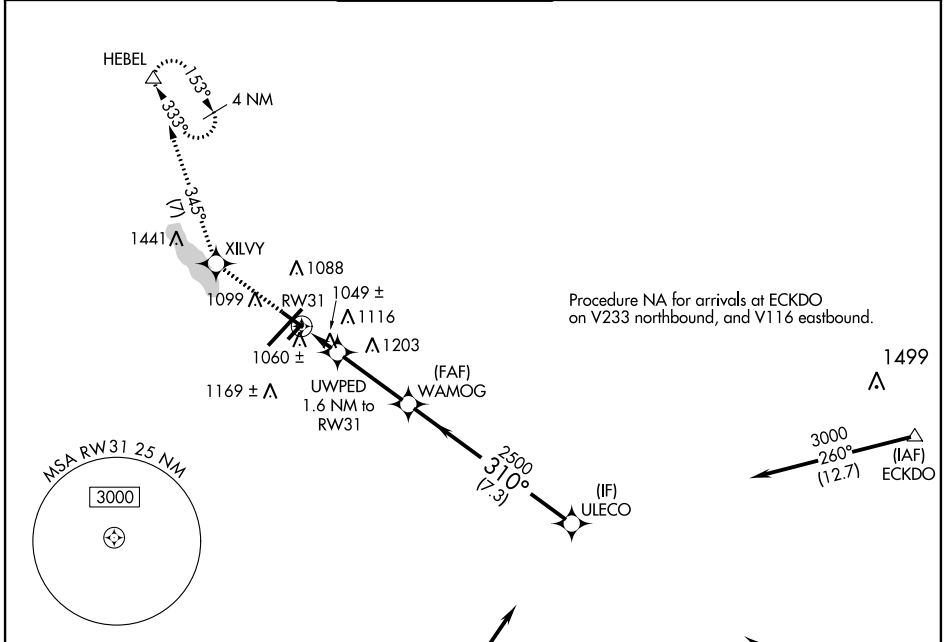
# RNAV (GPS) RWY 31

BATTLE CREEK / W.K. KELLOGG (BTL)

**⚠** When local altimeter setting not received, use Grand Rapids altimeter setting and increase all MDA 120 feet, increase LP and LNAV Cats C and D visibility  $\frac{3}{8}$  mile, Circling Cats C and D visibility  $\frac{1}{4}$  mile. When VGSi inop, Straight-In/Circling Rwy 13-31 procedure NA at night. DME/DME ASR RNP-0.3 NA. Visibility reduction by helicopters NA. Circling NA to Rwy 5R and 23L.

**MISSED APPROACH:**  
Climb to 3000 direct XILVY and on 345° track to HEBEL and hold.

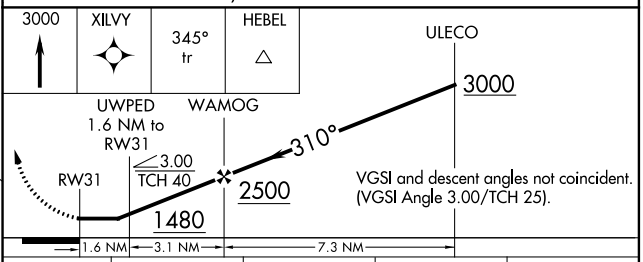
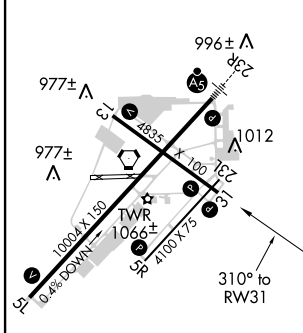
ATIS <b>128.325</b>	KALAMAZOO APP CON ★ <b>119.2 239.25</b>	BATTLE CREEK TOWER ★ <b>126.825 239.025</b>	GND CON <b>121.7 256.875</b>	UNICOM <b>122.95</b>	CTAF <b>126.825</b> <b>⓪</b>
------------------------	--	--	---------------------------------	-------------------------	---------------------------------



EC-1, 07 FEB 2013 to 07 MAR 2013

EC-1, 07 FEB 2013 to 07 MAR 2013

ELEV 952	<b>D</b>	THRE 929
----------	----------	----------



CATEGORY	A	B	C	D
LP MDA	1300-1		371 (400-1)	
LNAV MDA	1320-1	391 (400-1)	1320-1 $\frac{1}{8}$	391 (400-1 $\frac{1}{8}$ )
CIRCLING	1420-1 468 (500-1)	1440-1 488 (500-1)	1480-1 $\frac{1}{2}$ 528 (600-1 $\frac{1}{2}$ )	1520-2 568 (600-2)

HIRL Rwy 5L-23R **⓪**  
MIRL Rwy 13-31, 5R-23L **⓪**  
REIL Rwy 5L, 5R, 13, 23L and 31L **⓪**