

WAAS CH 56411 W23A	APP CRS 227°	Rwy Idg 10004 THRE 928 Apt Elev 952
--	------------------------	--

RNAV (GPS) RWY 23R

BATTLE CREEK / W.K. KELLOGG (BTL)

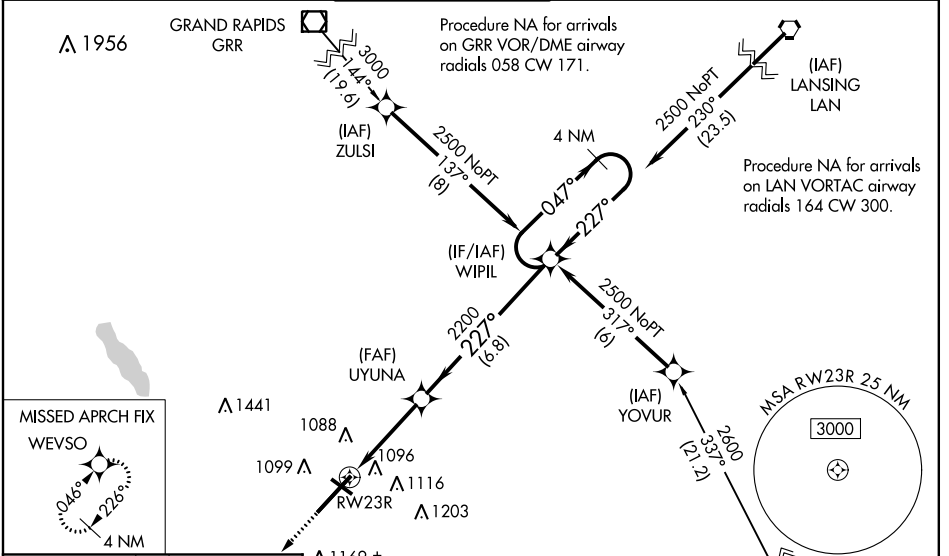
For uncompensated Baro-VNAV systems, LNAV/VNAV NA below -16°C (4°F) or above 38°C (100°F). DME/DME RNP-0.3 NA. When local altimeter setting not received, use Grand Rapids altimeter setting: increase all DA 106 feet and LNAV/VNAV all Cats visibility to RVR 5000; increase all MDA 120 feet, LNAV Cats C and D visibility to 1¼ mile and Circling Cats C and D visibility ¼ mile. VDP and Baro-VNAV NA when using Grand Rapids altimeter setting. For inoperative MALSR when using Grand Rapids altimeter setting, increase LPV all Cats visibility to RVR 5000 and LNAV Cats C and D visibility to 1½ mile. Circling NA to Rwy 23L/5R. When VGSI inoperative, Circling Rwy 13/31 NA at night.

MALSR



MISSED APPROACH:
Climb to 2500 direct WEVSO and hold.

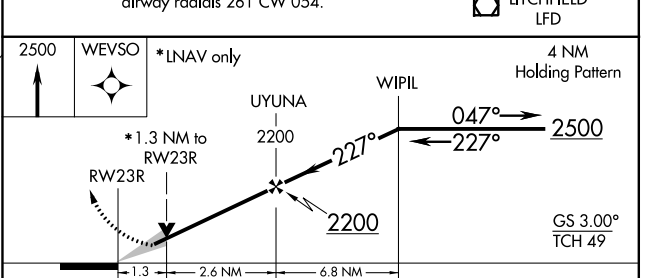
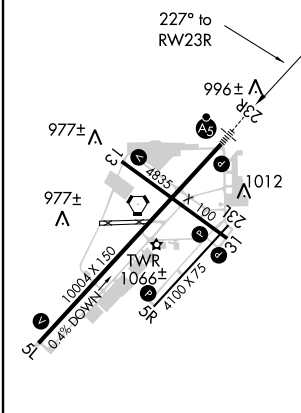
ATIS 128.325	KALAMAZOO APP CON★ 119.2 239.25	BATTLE CREEK TOWER★ 126.825 239.025	GND CON 121.7 256.875	UNICOM 122.95	CTAF 126.825 0
------------------------	---	---	---------------------------------	-------------------------	--------------------------



EC-1, 07 FEB 2013 to 07 MAR 2013

EC-1, 07 FEB 2013 to 07 MAR 2013

ELEV 952	D THRE 928
----------	-------------------



CATEGORY	A	B	C	D
LPV DA		1128/24	200 (200-½)	
LNAV/VNAV DA		1257/32	329 (400-⅝)	
LNAV MDA	1380/24	452 (500-½)	1380/45	452 (500-⅞)
CIRCLING	1420-1 468 (500-1)	1440-1 488 (500-1)	1480-1½ 528 (600-1½)	1520-2 568 (600-2)