


LOM BT	APP CRS	Rwy Idg	<b>10044</b>
<b>272</b>	<b>226°</b>	THRE	<b>928</b>
		Apt Elev	<b>952</b>

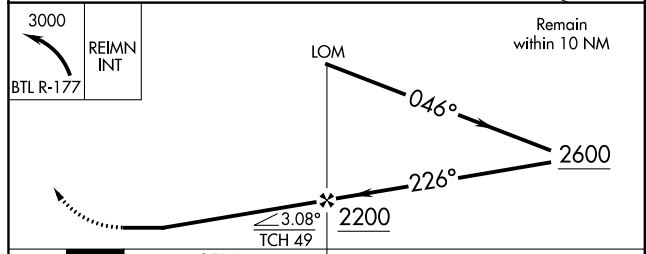
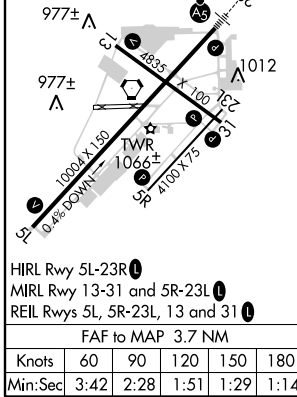
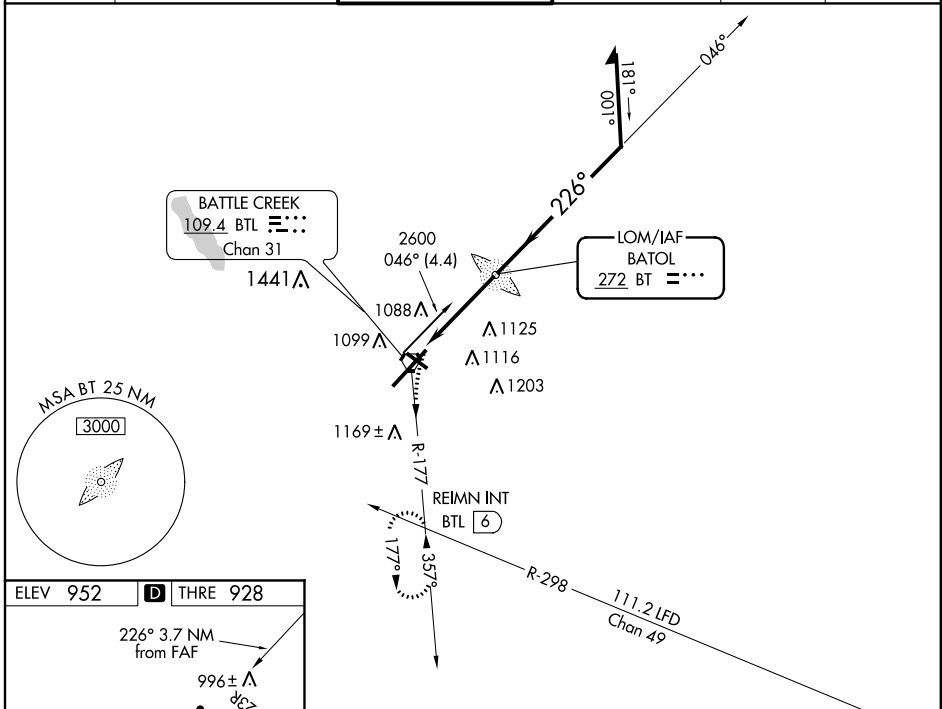
# NDB RWY 23R

BATTLE CREEK / W.K. KELLOGG (BTL)

**▽** When local altimeter setting not received, use Grand Rapids altimeter setting; increase all MDA 120 feet, S-23R Cats C and D visibility to 1½ mile and Circling Cat C ¼ mile. For inoperative MALSRS, increase S-23R Cats A and B visibility to RVR 5500 and Cats C and D visibility to 1½ mile. For inoperative MALSRS when using Grand Rapids altimeter setting, increase S-23R Cats A and B visibility to RVR 5500 and Cats C and D visibility to 1½ mile. Circling NA Rwys 5R/23L. When VGSi inoperative, Circling Rwys 13/31 NA at night.

**MALSRS**  
  
**MISSED APPROACH:**  
 Climbing left turn to 3000  
 on BTL VORTAC R-177  
 to REIMN Int/BTL VORTAC 6  
 DME and hold. Continue  
 climb-in-hold to 3000.

ATIS	KALAMAZOO APP CON *	<b>BATTLE CREEK TOWER *</b>	GND CON	UNICOM	CTAF
<b>128.325</b>	<b>119.2 239.25</b>	<b>126.825 239.025</b>	<b>121.7 256.875</b>	<b>122.95</b>	<b>126.825 ①</b>



CATEGORY	A	B	C	D
S-23R	1480/40	552 (600-¾)	1480/60	552 (600-1¼)
CIRCLING	1480-1	528 (600-1)	1480-1½ 528 (600-1½)	1520-2 568 (600-2)

EC-1, 07 FEB 2013 to 07 MAR 2013

EC-1, 07 FEB 2013 to 07 MAR 2013