

LOC I-BTL 110.5	APP CRS 227°	Rwy Idg 10004
		THRE 928
		Apt Elev 952

ILS or LOC RWY 23R

BATTLE CREEK / W.K. KELLOGG (BTL)

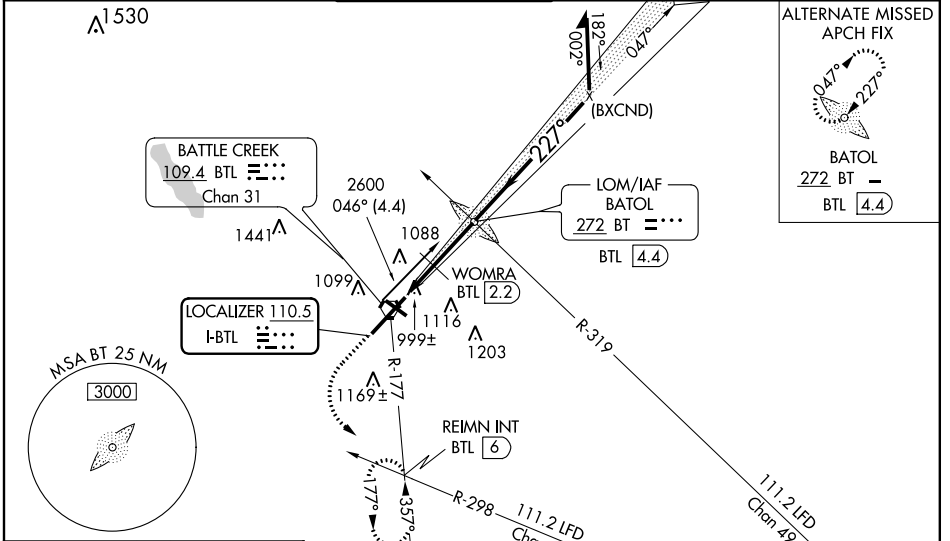
⚠ **RVR 1800 authorized with use of FD or AP or HUD to DA.
⚠ When local altimeter setting not received, use Grand Rapids altimeter setting; increase all DA 106 feet; increase all MDA 120 feet, S-LOC 23R Cats C and D visibility to 1 3/8 mile and Circling Cats C and D visibility 1/2 mile. WOMRA fix minimums increase S-LOC 23R Cats C and D visibility to RVR 5000 and Circling Cats C and D visibility 1/2 mile. For inoperative MALSRL, increase S-LOC 23R Cats C and D visibility to 1 3/8 mile. WOMRA fix minimums increase S-LOC 23R Cats C and D visibility 1 1/8 mile. For inoperative MALSRL when using Grand Rapids altimeter setting, increase S-LOC 23R Cats C and D visibility 1 3/4 mile. Circling NA to Rwy 5R/23L. When VGSI inoperative, Circling Rwy 13/31 NA at night.

MALSRL



MISSED APPROACH: Climb to 1500 then climbing left turn to 3000 on BTL VORTAC R-177 to REIMN INT/BTL VORTAC 6 DME and hold, continue climb-in-hold to 3000.

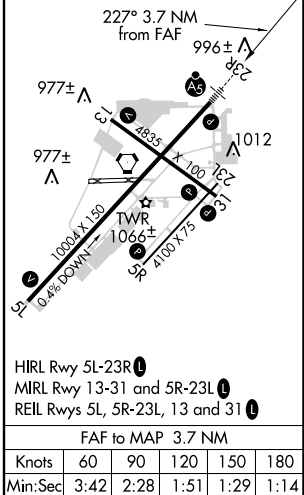
ATIS 128.325	KALAMAZOO APP CON * 119.2 239.25	BATTLE CREEK TOWER * 126.825 239.025	GND CON 121.7 256.875	UNICOM 122.95	CTAF 126.825
------------------------	--------------------------------------------	------------------------------------------------	---------------------------------	-------------------------	------------------------



ALTERNATE MISSED APCH FIX

BATOL
272 BT -
BTL 4.4

ELEV 952	D THRE 928
----------	-------------------



1500	3000	REIMN INT	BATOL LOM/INT BTL 4.4	# DME from BTL VORTAC.
		BTL R-177	REIMN INT	Remain within 10 NM
		*LOC only	WOMRA BTL 2.2	
			2173	047°
			2200	227°
			*1440	2600
			*1560 when using Grand Rapids altimeter setting.	GS 2.98° TCH 49
	1.6 NM	2.1 NM		
CATEGORY	A	B	C	D
S-ILS 23R		**1128/24	200 (200-1/2)	
S-LOC 23R	1440/24	512 (500-1/2)	1440/55	512 (500-1 1/4)
CIRCLING	1440-1	488 (500-1)	1480-1 1/2 528 (600-1 1/2)	1520-2 568 (600-2)
# WOMRA FIX MINIMUMS				
S-LOC 23R	1340/24	412 (400-1/2)	1340/40	412 (400-3/4)
CIRCLING	1420-1 468 (500-1)	1440-1 488 (500-1)	1480-1 1/2 528 (600-1 1/2)	1520-2 568 (600-2)