

WAAS CH 81825 W04A	APP CRS 040°	Rwy Idg 6900 THRE 66 Apt Elev 70
--	------------------------	---

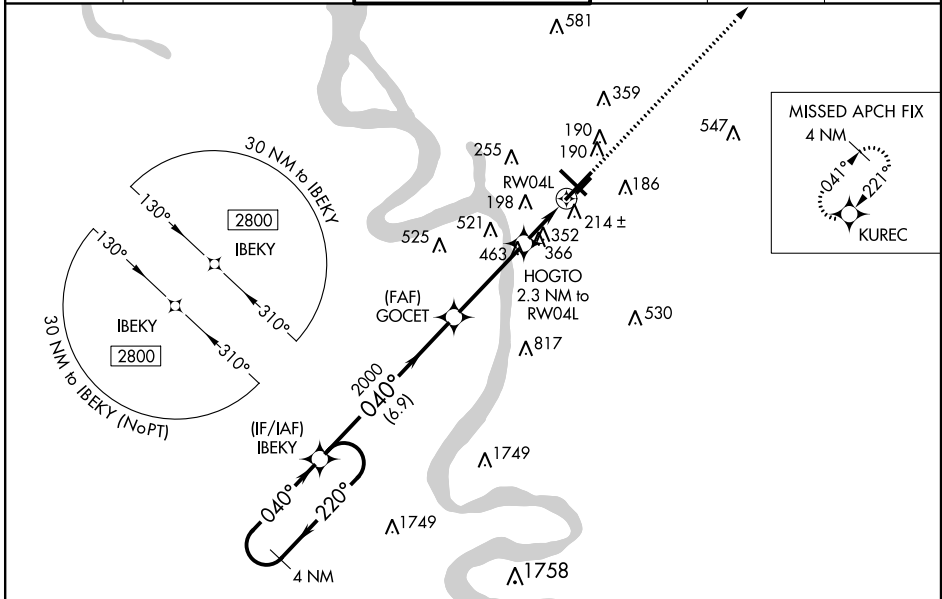
RNAV (GPS) RWY 4L

BATON ROUGE METROPOLITAN, RYAN FIELD (BTR)

⚠ Baro-VNAV NA when using Hammond altimeter setting. For uncompensated Baro-VNAV systems, LNAV/VNAV NA below -3°C (27°C) or above 43°C (109°F). DME/DME RNP-0.3 NA.
ASR Visibility reduction by helicopters NA. VDP NA with Hammond altimeter setting. When local altimeter setting not received, use Hammond altimeter setting and increase all DA 91 feet and all MDA 100 feet; increase LPV visibility ¼ mile all Cats, LNAV/VNAV visibility ½ mile all Cats and LNAV Cat C/D visibility ¼ mile, Circling Cat C visibility ¾ mile and Cat D visibility ¼ mile.

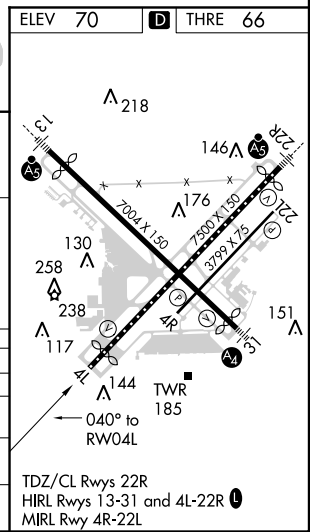
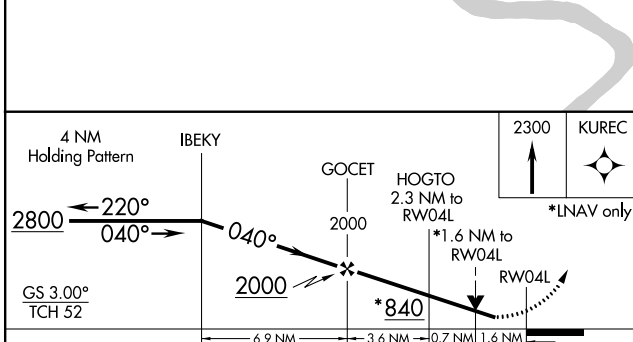
MISSED APPROACH:
Climb to 2300 direct KUREC and hold.

ATIS 125.2	BATON ROUGE APP CON* 120.3 278.3	RYAN TOWER* 118.45 (CTAF) 257.8	GND CON 121.9	CLNC DEL 119.4	UNICOM 122.95
----------------------	--	---	-------------------------	--------------------------	-------------------------



SC-4, 07 FEB 2013 to 07 MAR 2013

SC-4, 07 FEB 2013 to 07 MAR 2013



ELEV 70		THRE 66	
CATEGORY	A	B	C
LPV DA	373-1		307 (400-1)
LNAV/VNAV DA	668-2		602 (600-2)
LNAV MDA	620-1	554 (600-1)	620-1½ 554 (600-1½)
CIRCLING	620-1	550 (600-1)	660-1½ 610 (700-2)