

WAAS CH 72817	APP CRS 130°	Rwy Idg TDZE Apt Elev	6407 67 70
W13A			

RNAV (GPS) RWY 13

BATON ROUGE METROPOLITAN, RYAN FIELD (BTR)

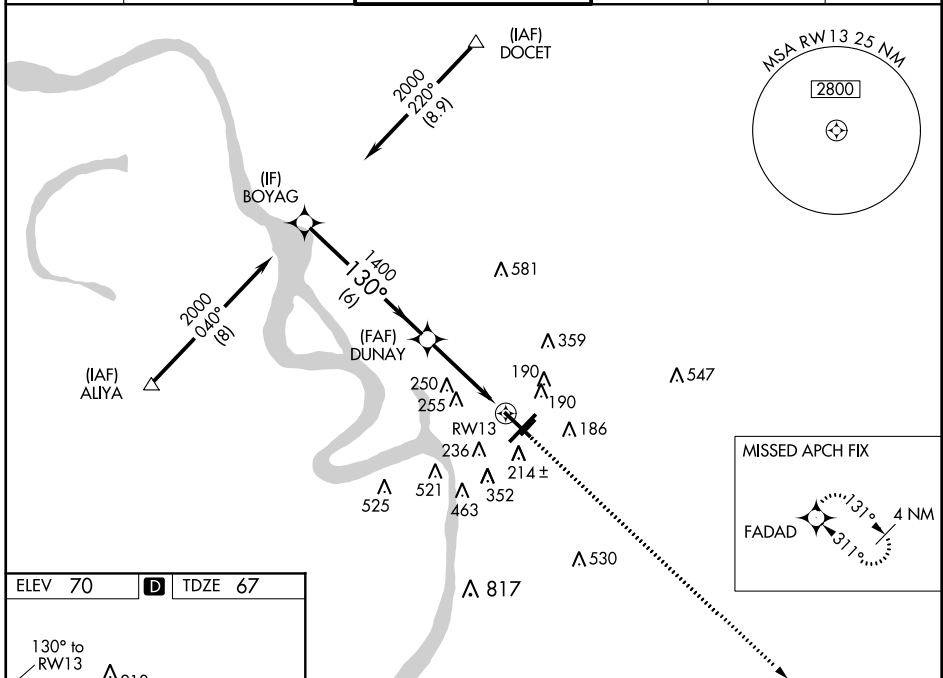
▼ Baro-VNAV NA when using Hammond altimeter setting. For uncompensated Baro-VNAV systems, LNAV/VNAV NA below -15°C (5°F) or above 48°C (118°F). DME/DME RNP-0.3 NA. When local altimeter setting not received, use Hammond altimeter setting and increase all DA 91 feet and all MDA 100 feet, and increase LNAV/VNAV all Cats visibility ½ mile, LNAV Cats C and D visibility ¼ mile, Circling Cat C visibility ½ mile, and Circling Cat D visibility ¼ mile. For inoperative MALSR when using Hammond altimeter setting, increase LPV all Cats visibility to 1 mile, LNAV Cat C visibility to ½ mile and LNAV Cat D visibility to ¾ mile. VDP NA with Hammond altimeter setting.

MALSR



MISSED APPROACH:
Climb to 2300 direct
FADAD and hold.

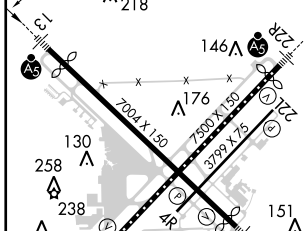
ATIS 125.2	BATON ROUGE APP CON * 120.3 278.3	RYAN TOWER * 118.45 (CTAF) 0 257.8	GND CON 121.9	CLNC DEL 119.4	UNICOM 122.95
----------------------	---	--	-------------------------	--------------------------	-------------------------



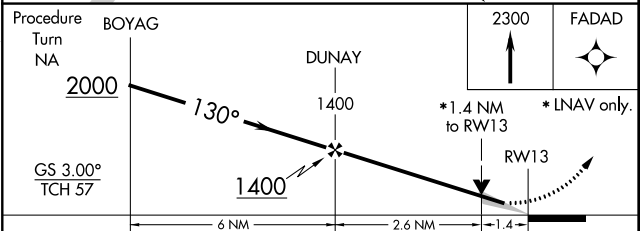
SC-4, 07 FEB 2013 to 07 MAR 2013

SC-4, 07 FEB 2013 to 07 MAR 2013

ELEV 70	D	TDZE 67
---------	----------	---------



TDZ/CL Rwy 4L and 22R
HIRL Rwy 13-31 and 4L-22R
MIRL Rwy 4R-22L



CATEGORY	A	B	C	D
LPV DA		267-½	200 (200-½)	
LNAV/VNAV DA		468-¾	401 (400-¾)	
LNAV MDA	560-½	493 (500-½)	560-¾ 493 (500-¾)	560-1 493 (500-1)
CIRCLING	560-1	490 (500-1)	660-1½ 590 (600-1½)	680-2 610 (700-2)