

LOM BT <b>284</b>	APP CRS <b>311°</b>	Rwy Idg TDZE Apt Elev	<b>6689</b> <b>70</b> <b>70</b>
----------------------	------------------------	-----------------------------	---------------------------------------

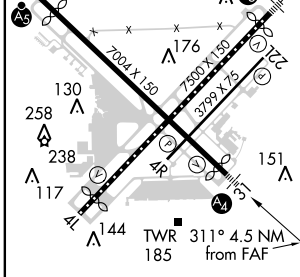
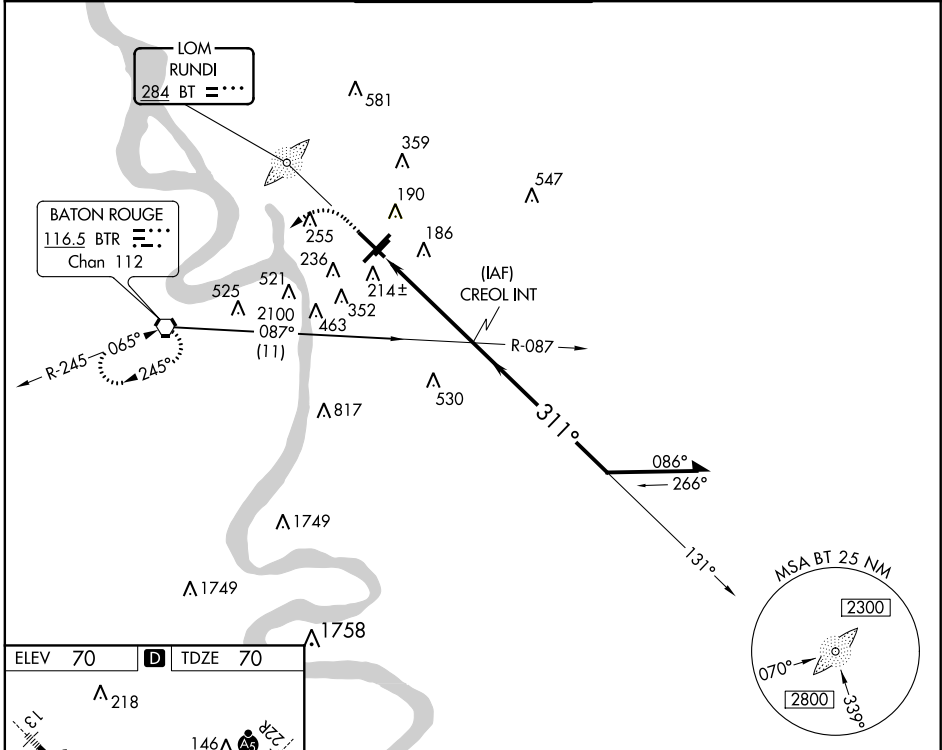
# NDB RWY 31

BATON ROUGE METROPOLITAN, RYAN FIELD (BTR)

**⚠** Inoperative table does not apply to Cats B and C. When local altimeter setting not received, use Hammond Northshore Rgnl altimeter setting and increase all MDA 100 feet and increase S-31 and Circling Cat C and D visibility ½ mile.

**MALS** = **24** MISSED APPROACH: Climb to 1000 then climbing left turn to 2100 direct BTR VORTAC and hold.

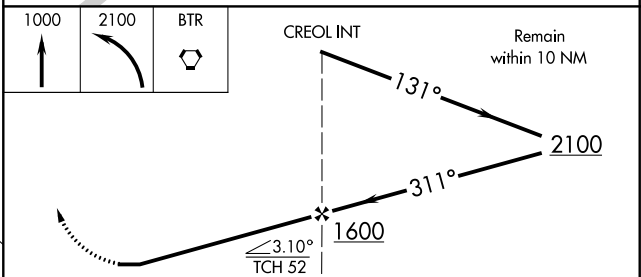
ATIS <b>125.2</b>	BATON ROUGE APP CON * <b>120.3 278.3</b>	RYAN TOWER * <b>118.45 (CTAF) 0 257.8</b>	GND CON <b>121.9</b>	CLNC DEL <b>119.4</b>	UNICOM <b>122.95</b>
----------------------	---------------------------------------------	----------------------------------------------	-------------------------	--------------------------	-------------------------



TDZ/CL Rwy 4L and 22R  
 HIRL Rwy 13-31 and 4L-22R  
 MIRL Rwy 4R-22L

FAF to MAP 4.5 NM

Knots	60	90	120	150	180
Min:Sec	4:30	3:00	2:15	1:48	1:30



CATEGORY	A	B	C	D
S-31	880-¾ 810 (900-¾)	880-1¼ 810 (900-1¼)	880-2¼ 810 (900-2¼)	880-2½ 810 (900-2½)
CIRCLING	880-1 810 (900-1)	880-1¼ 810 (900-1¼)	880-2¼ 810 (900-2¼)	880-2½ 810 (900-2½)

SC-4, 07 FEB 2013 to 07 MAR 2013

SC-4, 07 FEB 2013 to 07 MAR 2013