

LOC/DME I-CLZ 108.7	APP CRS 220°	Rwy Idg THRE 70 Apt Elev 70	7076
Chan 24			

ILS or LOC RWY 22R

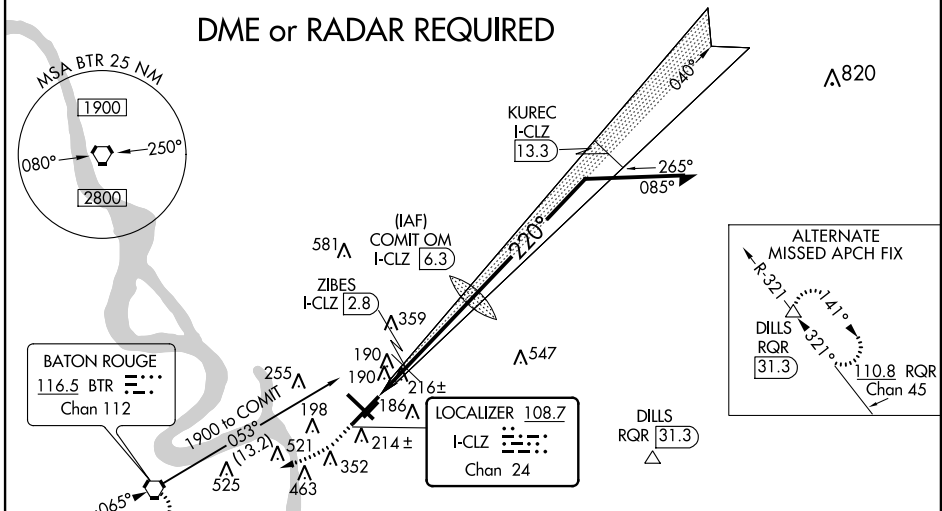
BATON ROUGE METROPOLITAN, RYAN FIELD (BTR)

ASR When local altimeter setting not received, use Hammond altimeter setting and increase DA 91 feet and all MDA 100 feet; increase S-ILS 22R visibility to RVR 2400 all Cats, increase S-LOC 22R Cat C/D visibility to RVR 6000 and Circling Cat C visibility 1/2 mile, and Circling Cat D visibility 1/4 mile, increase ZIBES fix minimums S-LOC 22R Cats C/D visibility 1/4 mile, and Circling Cats C visibility 1/2 mile, and Cat D visibility 1/4 mile. When using Hammond altimeter setting for operative MALS, increase S-ILS 22R visibility to RVR 4500 all Cats, S-LOC 22R Cat C/D visibility to 1 1/2, and increase ZIBES fix minimums S-LOC 22R Cats C/D visibility to 1 3/8 mile.

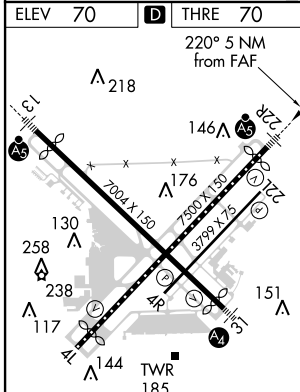
MALS MISSED APPROACH: Climb to 600 then climbing right turn to 2000 direct BTR VORTAC and hold.

ATIS 125.2	BATON ROUGE APP CON * 120.3 278.3	RYAN TOWER * 118.45 (CTAF) 257.8	GND CON 121.9	CLNC DEL 119.4	UNICOM 122.95
----------------------	---	--	-------------------------	--------------------------	-------------------------

DME or RADAR REQUIRED



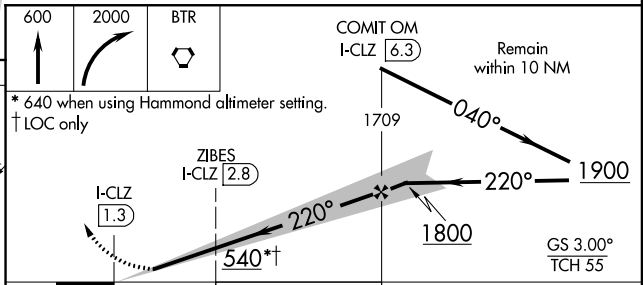
ELEV 70	D THRE 70
---------	------------------



TDZ/CL Rwy 22R
HIRL Rwys 13-31 and 4L-22R
MIRL Rwy 4R-22L

FAF to MAP 5 NM

Knots	60	90	120	150	180
Min:Sec	5:00	3:20	2:30	2:00	1:40



CATEGORY	A	B	C	D
S-ILS 22R	270/18 200 (200-1/2)			
S-LOC 22R	540/24	470 (500-1/2)	540/50	470 (500-1)
CIRCLING	560-1	490 (500-1)	660-1 1/2 590 (600-1 1/2)	680-2 610 (700-2)
ZIBES FIX MINIMUMS (DME REQUIRED)				
S-LOC 22R	480/24	410 (500-1/2)	480/40	410 (500-3/4)
CIRCLING	560-1	490 (500-1)	660-1 1/2 590 (600-1 1/2)	680-2 610 (700-2)