

BANGOR, MAINE

AL-39 (FAA)

VORTAC BGR 114.8	APP CRS 335°	Rwy Idg TDZE 163	11440
Chan 95		Apt Elev 192	

VOR/DME RWY 33

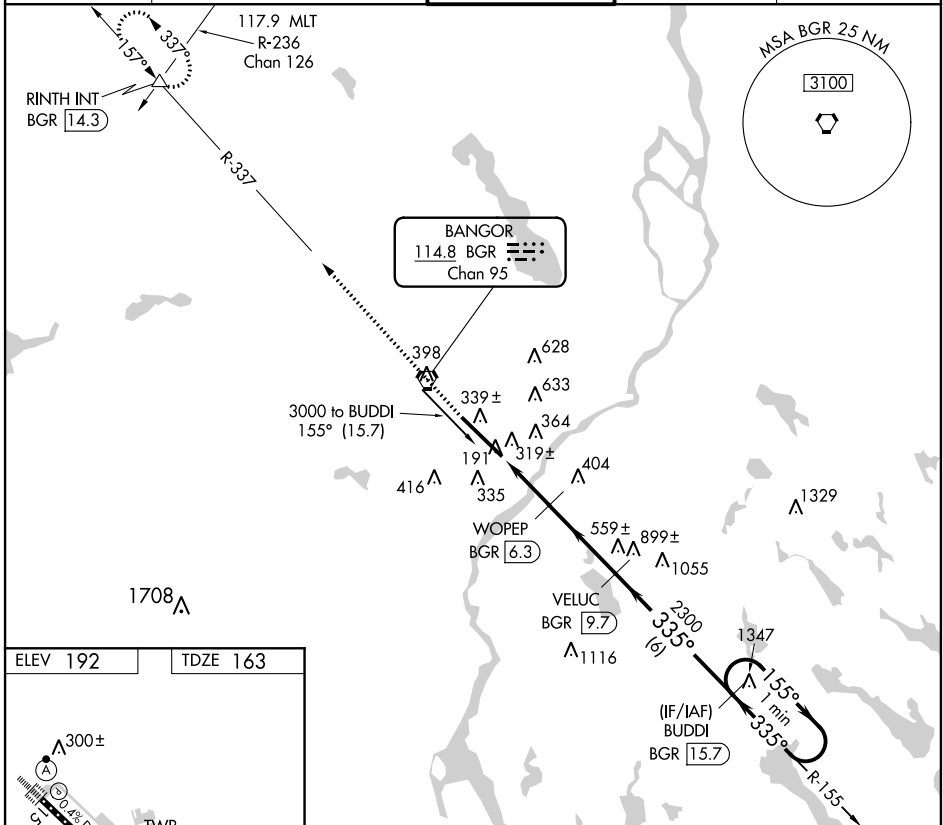
BANGOR INTL (BGR)

ASR For inoperative MALSR, increase S-33 Cat E visibility to 1½.
Circling NA NE of Rwy 15-33.

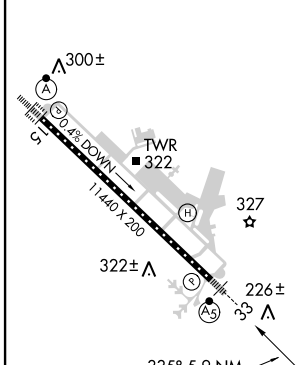


MISSED APPROACH: Climb to 3000 direct BGR VORTAC then via BGR R-337 to RINTH INT/14.3 DME and hold.

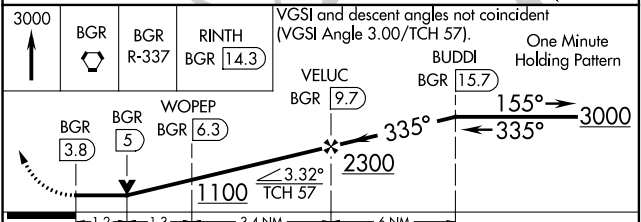
ATIS 127.75	BANGOR APP CON 124.5 239.3	BANGOR TOWER 120.7 257.8	GND CON 121.9 348.6	CLNC DEL 135.9 348.6
-----------------------	--------------------------------------	------------------------------------	-------------------------------	--------------------------------



ELEV 192	TDZE 163
----------	----------



FAF to MAP 5.9 NM					
Knots	60	90	120	150	180
Min:Sec	5:54	3:56	2:57	2:22	1:58



CATEGORY	A	B	C	D	E
S-33	600/24	437 (500-½)	600/40 437 (500-¾)	600/50	437 (500-1)
CIRCLING	640-1 448 (500-1)	660-1 468 (500-1)	660-1½ 468 (500-1½)	760-2	568 (600-2)

BANGOR, MAINE
Amdt 7 11349

44°48'N-68°50'W

BANGOR INTL (BGR)

VOR/DME RWY 33

NE-1, 07 FEB 2013 to 07 MAR 2013

NE-1, 07 FEB 2013 to 07 MAR 2013