

BANGOR, MAINE

AL-39 (FAA)

RNAV (GPS) RWY 33

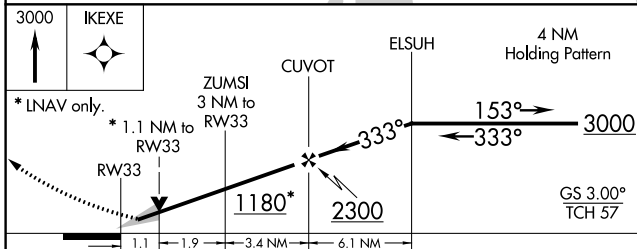
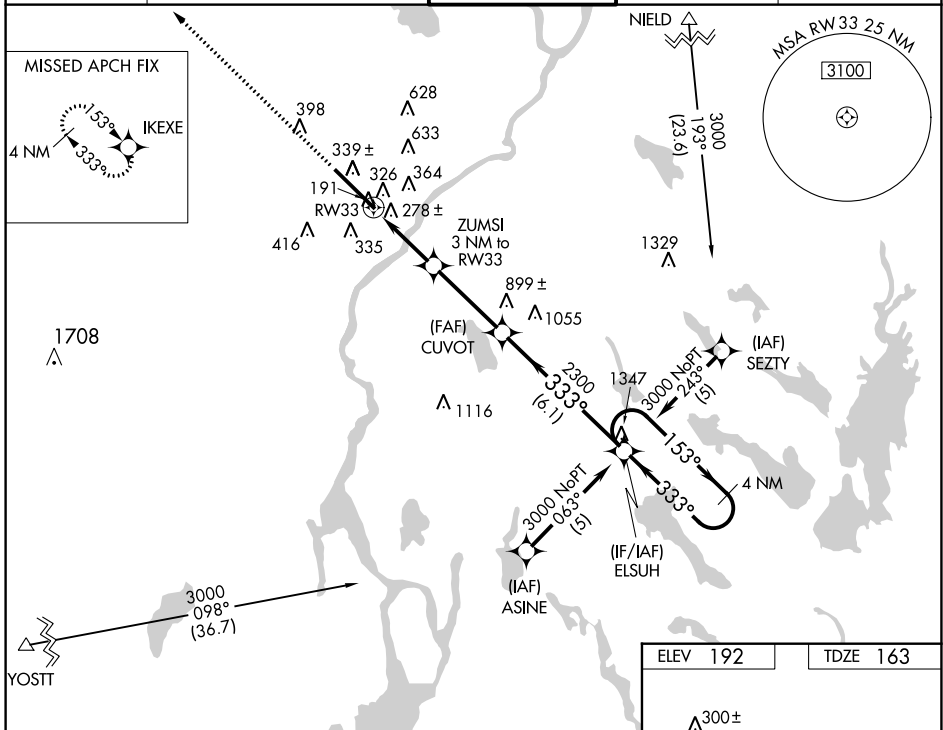
BANGOR INTL (BGR)

WAAS CH78007 W33A	APP CRS 333°	Rwy Idg 11440
		TDZE 163
		Apt Elev 192

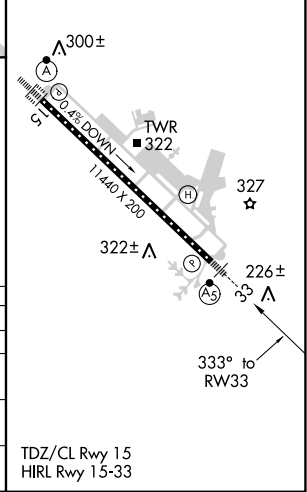
▼ For uncompensated Baro-VNAV systems, LNAV/VNAV NA below -15°C (5°F) or above 49°C (120°F). Circling NA NE of Rwy 15-33. For inoperative MALSR, increase LPV visibility to RVR 5000 all Cats, LNAV/VNAV Cat E visibility to 1½, and LNAV Cat D visibility to RVR 6000, Cat E visibility to 1½. DME/DME RNP-0.3 NA.

MALSR MISSED APPROACH: Climb to 3000 direct IKEXE and hold.

ATIS 127.75	BANGOR APP CON 124.5 239.3	BANGOR TOWER 120.7 257.8	GND CON 121.9 348.6	CLNC DEL 135.9 348.6
-----------------------	--------------------------------------	------------------------------------	-------------------------------	--------------------------------



ELEV 192	TDZE 163
----------	----------



CATEGORY	A	B	C	D	E
LPV DA	455/24 292 (300-½)				
LNAV/VNAV DA	604/50 441 (500-1)				
LNAV MDA	580/24	417 (400-½)	580/40 417 (400-¾)	580/50	417 (400-1)
CIRCLING	640-1 448 (500-1)	660-1 468 (500-1)	660-1½ 468 (500-1½)	760-2	568 (600-2)

TDZ/CL Rwy 15
HIRL Rwy 15-33

BANGOR, MAINE
Orig 11349

44°48'N-68°50'W

RNAV (GPS) RWY 33

NE-1, 07 FEB 2013 to 07 MAR 2013

NE-1, 07 FEB 2013 to 07 MAR 2013