

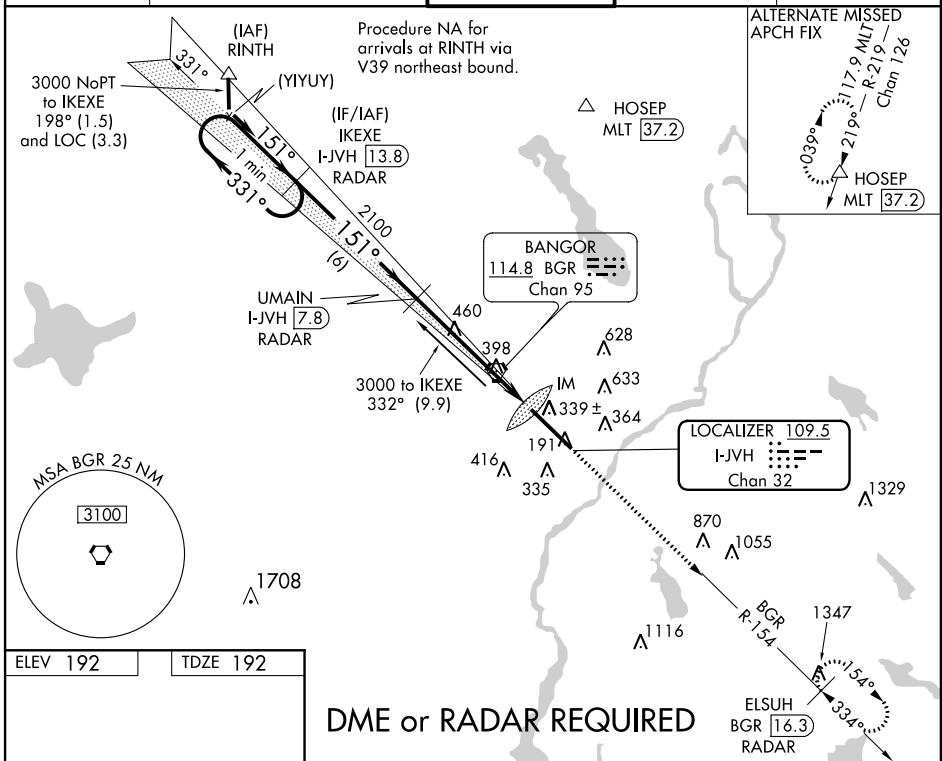
LOC/DME I-JVH <b>109.5</b> Chan <b>32</b>	APP CRS <b>151°</b>	Rwy Idg TDZE <b>192</b> Apt Elev <b>192</b>	<b>11440</b>
---	------------------------	---	--------------

# ILS or LOC RWY 15

BANGOR INTL (BGR)

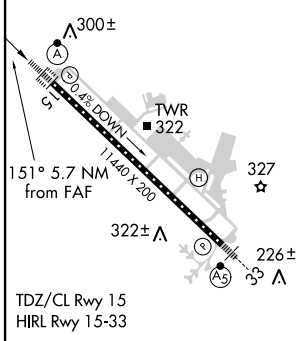
<p><b>ASR</b> For inoperative ALSF, increase S-ILS 15 Cat E visibility to RVR 4000 and S-LOC 15 Cat E visibility to 1/2. Circling NA NE of Rwy 15-33. DME or Radar required.</p>	<p>ALSF-2</p>	<p>MISSED APPROACH: Climb to 3000 via heading 153° and BGR R-154 to ELSUH /BGR 16.3 DME/RADAR and hold.</p>
--	---------------	---

<p>ATIS <b>127.75</b></p>	<p>BANGOR APP CON <b>124.5 239.3</b></p>	<p>BANGOR TOWER <b>120.7 257.8</b></p>	<p>GND CON <b>121.9 348.6</b></p>	<p>CLNC DEL <b>135.9 348.6</b></p>
-------------------------------	--	--	---------------------------------------	--



ELEV 192	TDZE 192
----------	----------

## DME or RADAR REQUIRED



FAF to MAP 5.7 NM					
Knots	60	90	120	150	180
Min:Sec	5:42	3:48	2:51	2:17	1:54

<p>300±</p> <p>TWR 322</p> <p>327</p> <p>322±</p> <p>226±</p> <p>TDZ/CL Rwy 15</p> <p>HIRL Rwy 15-33</p>
--

CATEGORY	A	B	C	D	E
S-ILS 15	392/18 200 (200-1/2)				392/24 200 (200-1/2)
S-LOC 15	720/24 528 (600-1/2)	720/55 528 (600-1/4)			
CIRCLING	720-1 528 (600-1)	720-1/2 528 (600-1/2)	760-2 568 (600-2)		

NE-1, 07 FEB 2013 to 07 MAR 2013

NE-1, 07 FEB 2013 to 07 MAR 2013