

BANGOR, MAINE

# HI-VOR/DME or TACAN RWY 33

VORTAC BGR <b>114.8</b> Chan <b>95</b>	APCH CRS <b>335°</b>	Rwy Idg <b>11,440</b> TDZE <b>163</b> Arpt Elev <b>192</b>
--	-------------------------	--

JAL-39 [USAF]

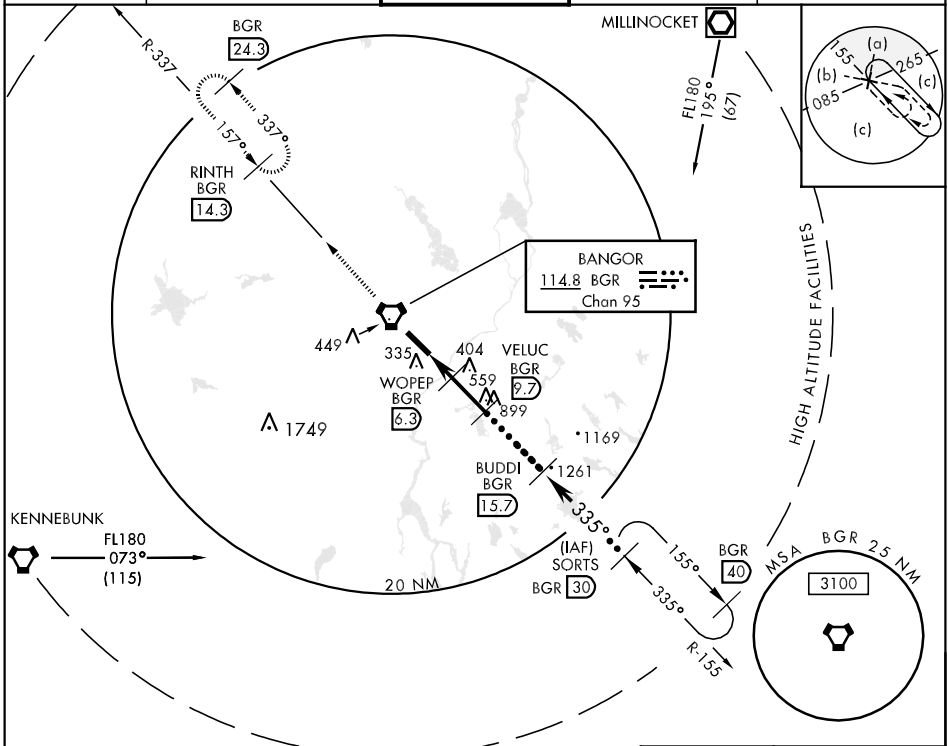
BANGOR INTL (KBGR)

▼ \* When ALS inop., increase CAT C RVR to 60 and vis to 1¼ miles, CAT D/E vis to 1½ miles.  
\*\* Circling not authorized NE of Rwy 15-33.



MISSED APPROACH: Climb to 3000 direct BGR VORTAC then via BGR R-337 to RINTH (BGR 14.3 DME) and hold.

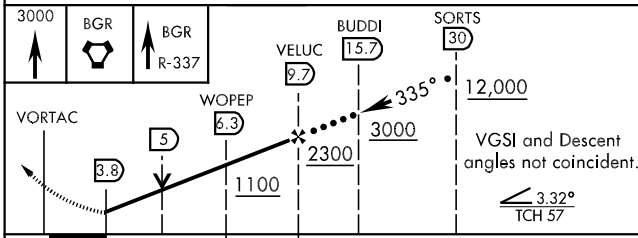
ATIS <b>127.75</b>	BANGOR APP CON 155°-334° <b>118.925 239.3</b> 335°-154° <b>124.5 239.3</b>	BANGOR TOWER <b>120.7 257.8</b>	GND CON <b>121.9 348.6</b>	ASR
-----------------------	--	------------------------------------	-------------------------------	-----



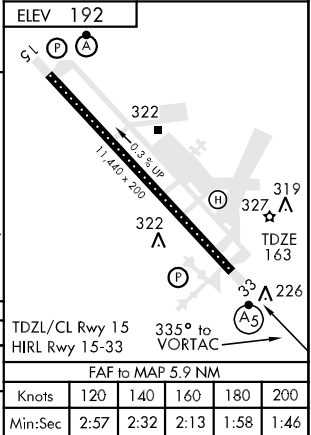
NE-1, 07 FEB 2013 to 07 MAR 2013

NE-1, 07 FEB 2013 to 07 MAR 2013

EMERG SAFE ALT 100 NM 7500



CATEGORY	C	D	E
S-33 *	600/40 437 (500-¾)	600/50	437 (500-1)
CIRCLING **	660-1½ 468 (500-1½)	760-2	568 (600-2)



BANGOR, MAINE  
Amdt 4 11153

44°48'N-68°50'W

BANGOR INTL (KBGR)

# HI-VOR/DME or TACAN RWY 33