

BANGOR, MAINE

HI-VOR/DME or TACAN RWY 15

VORTAC BGR 114.8 Chan 95	APCH CRS 157°	Rwy Idg 11,440 TDZE 192 Arpt Elev 192
--------------------------------	------------------	---

JAL-39 [USAF]

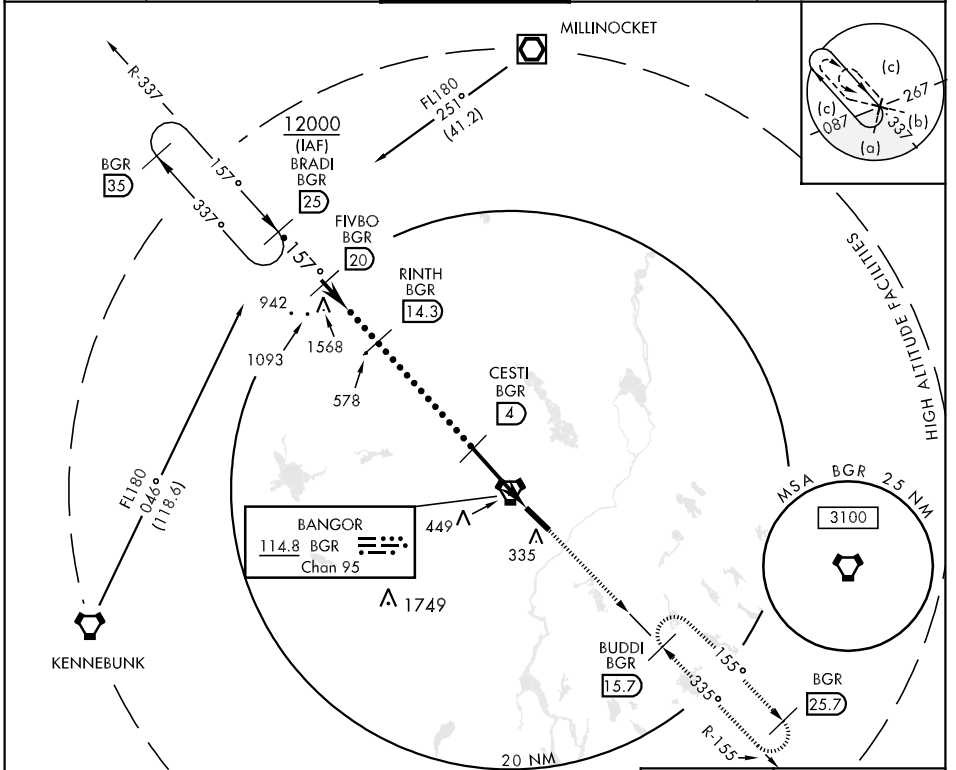
BANGOR INTL (KBGR)

▼ * When ALS inop, increase CAT E vis to 1 3/4 miles.
** Circling not authorized NE of Rwy 15-33.

ALSF-2
A

MISSED APPROACH: Climb to 3000 via BGR VORTAC R-155 to BUDDI (R-155/15.7 DME) and hold.

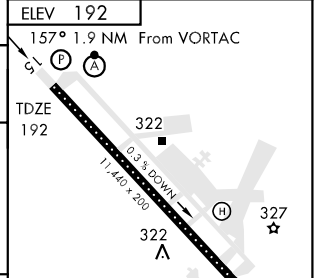
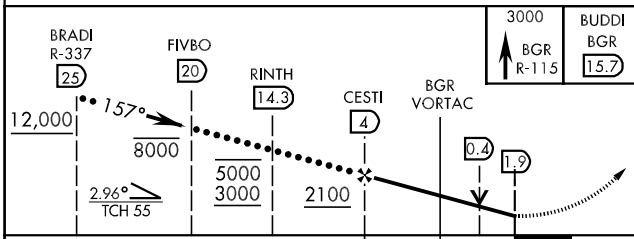
ATIS 127.75	BANGOR APP CON 155° - 334° 118.925 239.3 335° - 154° 124.5 239.3	BANGOR TOWER 120.7 257.8	GND CON 121.9 348.6	ASR
----------------	--	-----------------------------	------------------------	-----



NE-1, 07 FEB 2013 to 07 MAR 2013

NE-1, 07 FEB 2013 to 07 MAR 2013

EMERG SAFE ALT 100 NM 7500



CATEGORY	C	D	E
S-15 *	720/50 528 (600-1)	720/60	528 (600-1 1/4)
CIRCLING **	720-1 1/2 528 (600-1 1/2)	760-2	568 (600-2)

TDZL/CL Rwy 15	157° 1.9 NM From VORTAC
HIRL Rwy 15-33	322
FAF to MAP 5.9 NM	
Knots	120 140 160 180 200
Min:Sec	2:57 2:32 2:13 1:58 1:46

BANGOR, MAINE
Amdt 3 11153

44°48'N-68°50'W

BANGOR INTL (KBGR)

HI-VOR/DME or TACAN RWY 15