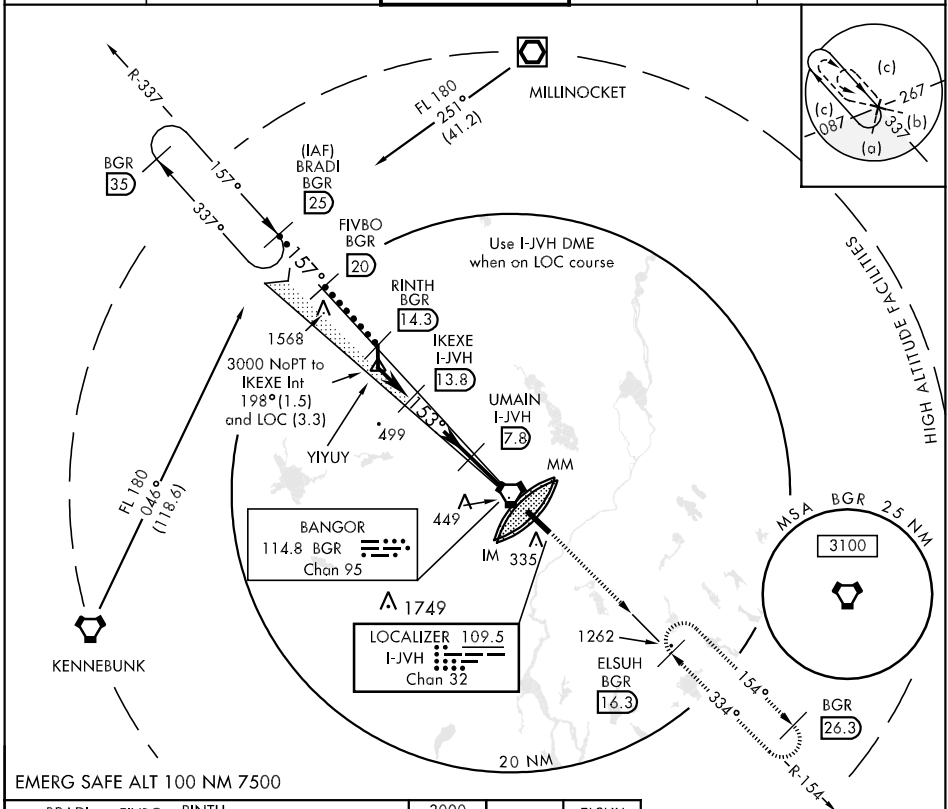


LOC/DME I-JVH 109.5 Chan 32	APCH CRS 153°	Rwy Idg 11,440 TDZE 192 Arpt Elev 192	JAL-39 [USAF]	BANGOR INTL (KBGR)
-------------------------------------------------	-------------------------	------------------------------------------------------------------	---------------	--------------------

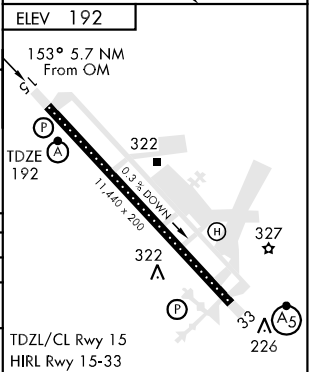
▼ ** When ALS inop increase CAT C/D RVR to 40.
 *** When ALS inop increase CAT E vis to 1 3/4 miles.
 *** Circling not authorized NE of Rwy 15-33.

ALSF-2 MISSED APPROACH: Climb to 3000 via Heading 153° and BGR VORTAC R-154 to ELSUH (BGR-154/16.3 DME) and hold.

ATIS 127.75	BANGOR APP CON 155°- 334° 118.925 239.3 335°- 154° 124.5 239.3	BANGOR TOWER 120.7 257.8	GND CON 121.9 348.6	ASR
-----------------------	------------------------------------------------------------------------------------	------------------------------------	-------------------------------	-----



BRADI R-337 25	FIVBO BGR 20	RINTH BGR 14.3	YIYUY Intcp Lczt	IKEXE I-JVH 13.8	UMAIN I-JVH 7.3	3000 hdg 153°	BGR R-154	ELSUH BGR 16.3
12,000	8000	5000	3000	3000	2100	5.3 NM	1.3 NM	1.1 NM
VGS and ILS GS not coincident		GS 3.00° TCH 50'		3000		BGR VORTAC		I-JVH 2.1
CATEGORY	C	D		E				
S-ILS 15 *	392/18	200	(200-3/4)		392/24	200	(200-1/2)	
S-LOC 15 **	720/50	528	(600-1)		720/60	528	(600-1 1/4)	
CIRCLING ***	720-1 1/2	528	(600-1 1/2)		760-2	568	(600-2)	



NE-1, 07 FEB 2013 to 07 MAR 2013

NE-1, 07 FEB 2013 to 07 MAR 2013